

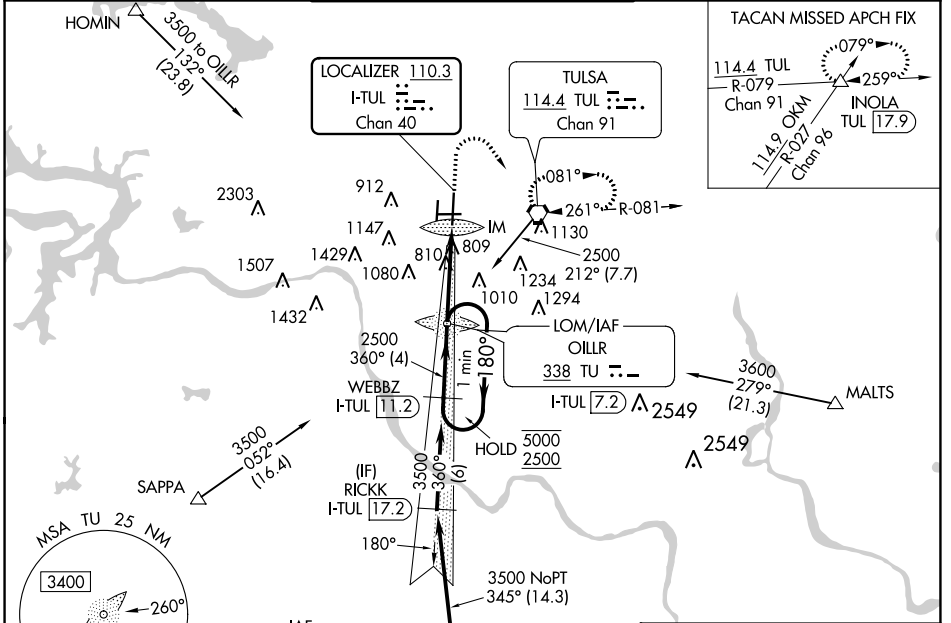
LOC/DME I-TUL 110.3 Chan 40	APP CRS 360°	Rwy Idg 10000 TDZE 650 Apt Elev 678
---	------------------------	--

ILS RWY 36R (SA CAT I)

TULSA INTL (TUL)

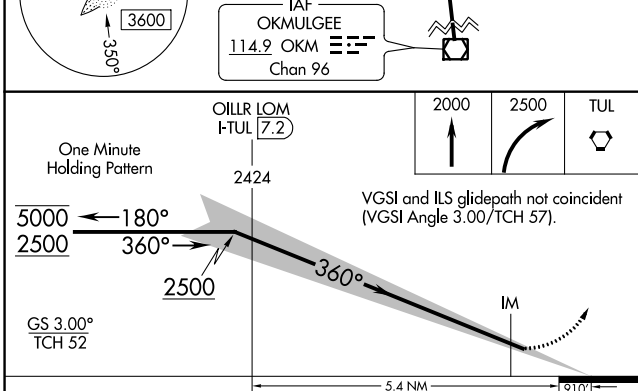
ADF or DME required for procedure entry.		ALSIF-2	MISSED APPROACH: Climb to 2000 then climbing right turn to 2500 direct TUL VORTAC and hold. (TACAN aircraft climb to 2000 then climbing right turn to 3500 via TUL VORTAC R-079 to INOLA INT/17.9 DME and hold E, RT, 259° inbound).	
ASR Simultaneous approach authorized. Requires specific OPSEC, MSPEC, or LOA approval and use of HUD to DH.				

D-ATIS 124.9 377.2	TULSA APP CON 124.0 338.3	TULSA TOWER 121.2 310.8 (Rwys 18L-36R, 8-26) 118.7 257.8 (Rwy 18R-36L)	GND CON 121.9 348.6	CLNC DEL 134.05 284.7
------------------------------	-------------------------------------	--	-------------------------------	---------------------------------

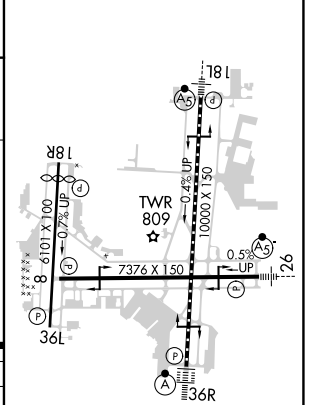


SC-1, 03 OCT 2024 to 31 OCT 2024

SC-1, 03 OCT 2024 to 31 OCT 2024



ELEV 678	D TDZE 650
----------	-------------------



CATEGORY	A	B	C	D
S-ILS 36R	RA 166/14 150 DA 800			

SA CATEGORY I ILS-SPECIAL AIRCREW & AIRCRAFT CERTIFICATION REQUIRED

TDZ/CL Rwy 36R
HIRL Rwys 8-26, 18L-36R and 18R-36L
REIL Rwys 8, 18R and 36L