

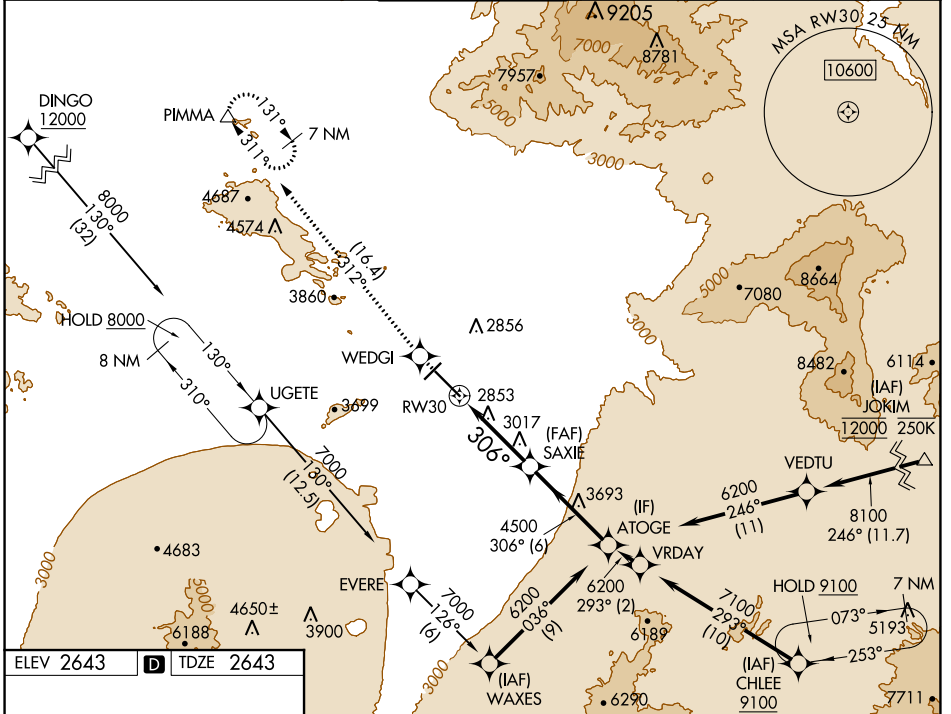
WAAS CH <b>45746</b> <b>W30A</b>	APP CRS <b>306°</b>	Rwy ldg TDZE Apt Elev	<b>10996</b> <b>2643</b> <b>2643</b>
--	------------------------	-----------------------------	--

# RNAV (GPS) Z RWY 30

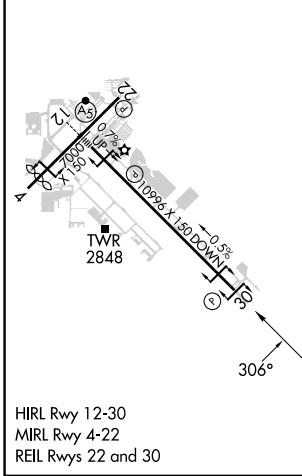
TUCSON INTL (TUS)

RNP APCH - GPS.	MISSED APPROACH: Climb to 6800 direct WEDGI and on track 312° to PIMMA and hold.
<p>▼ For uncompensated Baro-VNAV systems, LNAV/VNAV NA below -2°C or above 54°C.</p> <p>▲</p>	

ATIS <b>123.8 279.65</b>	TUCSON APP CON <b>119.4 318.1</b>	TUCSON TOWER <b>118.3 257.8</b>	GND CON <b>120.025 348.6</b>	CLNC DEL <b>126.65 326.2</b>
-----------------------------	--------------------------------------	------------------------------------	---------------------------------	---------------------------------



ELEV 2643	<b>D</b>	TDZE 2643
-----------	----------	-----------



6800	WEDGI	tr 312°	PIMMA	VGSI and RNAV glidepath not coincident (VGSI Angle 3.00/TCH 81).	ATOGE
				SAXIE	
				4500	6200
				4500	
				1.7 NM	3.6 NM
				1.7 NM	6 NM
CATEGORY	A	B	C	D	
LPV DA		2929-7/8	286 (300-7/8)		
LNAV/VNAV DA		3029-1 1/8	386 (400-1 1/8)		
LNAV MDA	3280-1	637 (700-1)	3280-1 3/4	637 (700-1 3/4)	
CIRCLING	3300-1	657 (700-1)	3300-1 3/4	3640-3	997 (1000-3)

TUCSON, ARIZONA  
Orig 30NOV23

32°07'N-110°56'W

# RNAV (GPS) Z RWY 30

TUCSON INTL (TUS)

SW-4, 03 OCT 2024 to 31 OCT 2024

SW-4, 03 OCT 2024 to 31 OCT 2024