

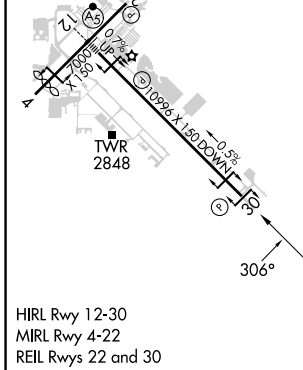
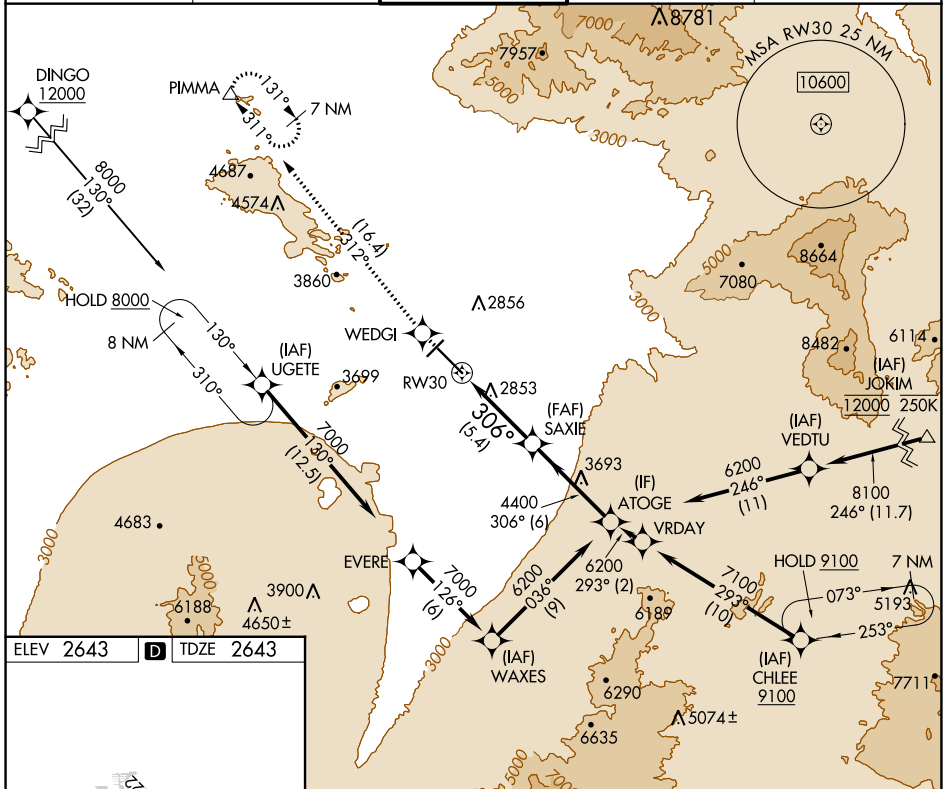
APP CRS	Rwy Idg	<b>10996</b>
<b>306°</b>	TDZE	<b>2643</b>
	Apt Elev	<b>2643</b>

# RNAV (RNP) Y RWY 30

TUCSON INTL (TUS)

RNP AR APCH - GPS.	MISSED APPROACH: Climb to 6800 direct WEDGI and on track 312° to PIMMA and hold.
▼ For uncompensated Baro-VNAV systems, procedure NA below -2°C or above 54°C.	

ATIS <b>123.8 279.65</b>	TUCSON APP CON <b>119.4 318.1</b>	TUCSON TOWER <b>118.3 257.8</b>	GND CON <b>120.025 348.6</b>	CLNC DEL <b>126.65 326.2</b>
-----------------------------	--------------------------------------	------------------------------------	---------------------------------	---------------------------------



6800	WEDGI	PIMMA	VGSI and RNAV glidepath not coincident (VGSI Angle 3.00/TCH 81).	
↑	◆	tr 312°	△	
			SAXIE	ATOGE
			4400	6200
			306°	
			5.4 NM	6 NM
CATEGORY	A	B	C	D
RNP 0.30 DA	3062-1½ 419 (500-1½)			
<b>AUTHORIZATION REQUIRED</b>				

SW-4, 03 OCT 2024 to 31 OCT 2024

SW-4, 03 OCT 2024 to 31 OCT 2024