

APP CRS	Rwy Idg	6000
216°	TDZE	2572
	Apt Elev	2643

RNAV (GPS) RWY 22

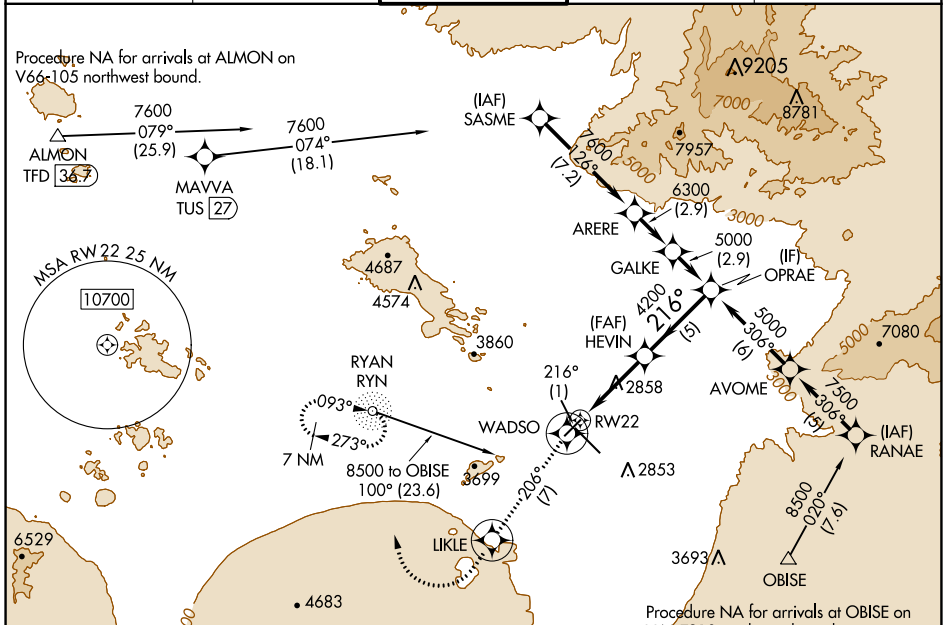
TUCSON INTL (TUS)

RNP APCH - GPS.

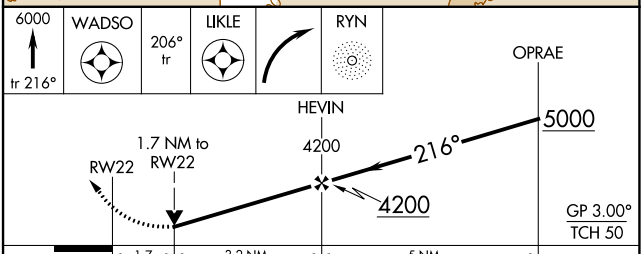
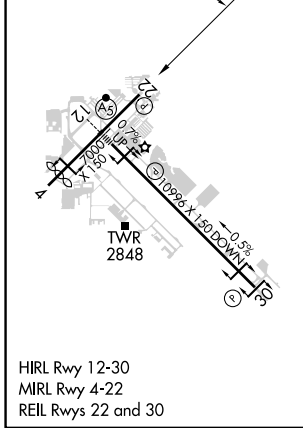
▼ Rwy 22 helicopter visibility reduction below 3/4 SM NA.
▲ For uncompensated Baro-VNAV systems, LNAV/VNAV NA below -2°C or above 54°C.

MISSED APPROACH: Climb to 6000 on track 216° to WADSO and 206° track to LIKLE and right turn direct RYN NDB and hold, continue climb-in-hold to 6000.

ATIS 123.8 279.65	TUCSON APP CON 119.4 318.1	TUCSON TOWER 118.3 257.8	GND CON 120.025 348.6	CLNC DEL 126.65 326.2
-----------------------------	--------------------------------------	---	---------------------------------	---------------------------------



ELEV 2643	D	TDZE 2572
-----------	----------	-----------



CATEGORY	A	B	C	D
LNAV/VNAV	DA	3145-2		573 (600-2)
LNAV MDA	3160-1	588 (600-1)	3160-1 3/4	588 (600-1 3/4)
CIRCLING	3160-1	3220-1	3220-1 3/4	3660-3
	517 (600-1)	577 (600-1)	577 (600-1 3/4)	1017 (1100-3)

SW-4, 31 OCT 2024 to 28 NOV 2024

SW-4, 31 OCT 2024 to 28 NOV 2024