

TUCSON, ARIZONA

# RNAV (GPS) RWY 13

WAAS CH <b>66933</b> W13A	APCH CRS <b>128°</b>	Rwy ldg TDZE <b>13,645</b> 2615	Arpt Elev <b>2704</b>
---------------------------------	-------------------------	---------------------------------------	--------------------------

(USAF)

DAVIS MONTHAN AFB (KDMA)

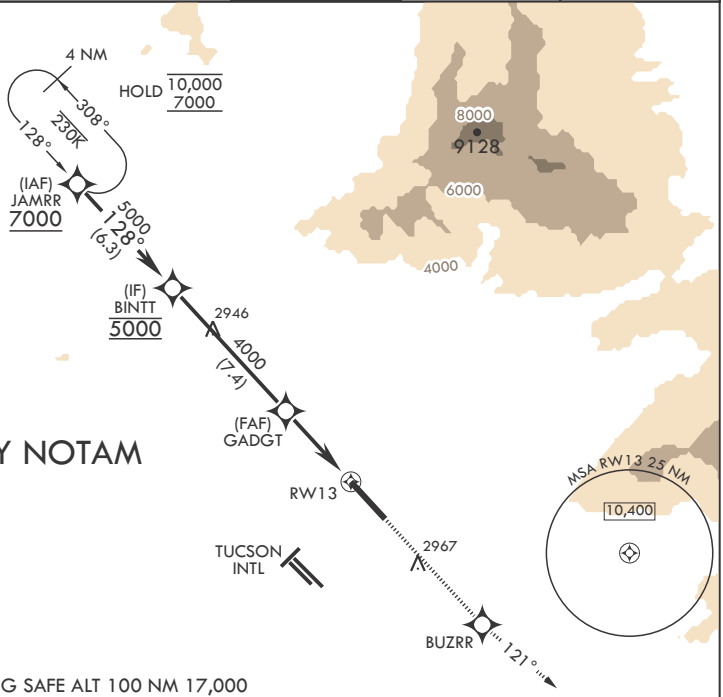
RNP APCH	MISSED APPROACH: Climb to 10,000 direct BUZZR, track 121° to ACINI and hold, continue climb-in-hold to 10,000.
RADAR required	
* Circling not authorized SW of RWY 13-31.	

ATIS* <b>132.3 270.1</b>	TUCSON APP CON/DEP CON <b>119.4 269.55</b>	TOWER <b>118.85 253.5</b>	GND CON <b>121.8 275.8</b>	CLNC DEL <b>121.8 275.8</b>
-----------------------------	---	------------------------------	-------------------------------	--------------------------------

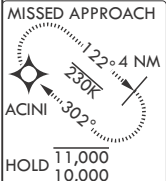
For uncompensated Baro-VNAV systems, LNAV/VNAV NA below 5°C or above 54°C.

Average Cold Temperature based on Standard -30.00°C ISA deviation.

CAUTION: Para Jump operations in the vicinity of Pinal Airpark.

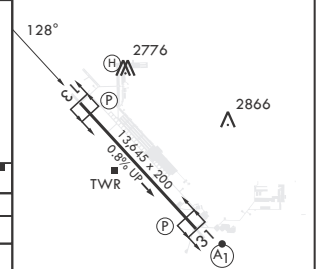
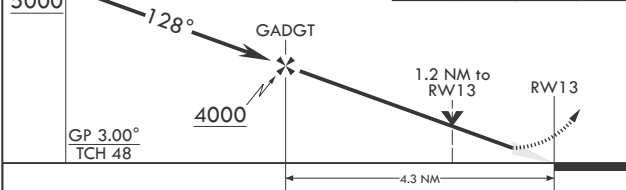


## EFFECTIVE BY NOTAM



EMERG SAFE ALT 100 NM 17,000

BINTT 5000	VGSI and RNAV glidepath not coincident (VGSI Angle 3.00/TCH 58).	10,000	BUZZR	tr 121°	ACINI	ELEV 2704	TDZE 2615
---------------	--	--------	-------	---------	-------	-----------	-----------



CATEGORY	A	B	C	D	E
LPV DA	2815/40		200	(200-¾)	
LNAV/VNAV DA	2892/45 277 (200-¾)	2903/45 288 (200-¾)	2911/45 296 (300-¾)	2922/45 307 (300-¾)	2973/55 358 (300-1)
LNAV MDA	3020/55	405 (400-1)	3020/60	405 (400-1½)	
<b>C</b> CIRCLING*	3200-1 496 (500-1)	3220-1 516 (600-1)	3280-1½ 576 (600-1½)	3420-2¼ 716 (800-2¼)	3460-2¾ 756 (800-2¾)

HIRL all Rwys  
REIL Rwy 13

TUCSON, ARIZONA

32°10'N - 110°53'W

DAVIS MONTHAN AFB (KDMA)

Orig 05SEP24

# RNAV (GPS) RWY 13

SW-4, 31 OCT 2024 to 28 NOV 2024

SW-4, 31 OCT 2024 to 28 NOV 2024