

TUCSON, ARIZONA

# ILS or LOC Y RWY 13

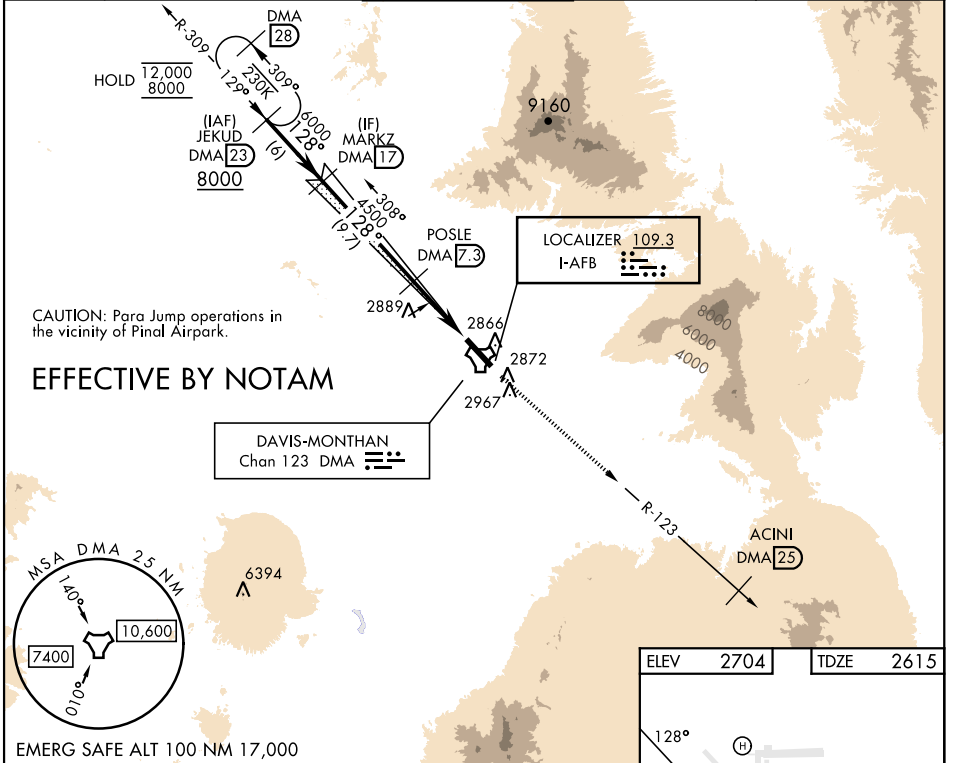
LOC I- <b>AFB</b> <b>109.3</b>	APCH CRS <b>128°</b>	Rwy Idg <b>13,645</b> TDZE <b>2615</b> Arprt Elev <b>2704</b>
-----------------------------------	-------------------------	---------------------------------------------------------------------

[USAF]

DAVIS-MONTHAN AFB (KDMA)

DME or RADAR required	MISSED APPROACH: Climbing to 8000 intercept DMA TACAN R-123 to ACINI. Expect RADAR vectors.
-----------------------	---------------------------------------------------------------------------------------------

ATIS★ <b>270.1</b>	TUCSON APP CON 066°-274° <b>119.4 318.1</b> 275°-065° <b>125.1 269.55</b>	TOWER <b>118.85 253.5</b>	GND CON <b>121.8 275.8</b>	CLNC DEL <b>121.8 275.8</b>
-----------------------	---------------------------------------------------------------------------------	------------------------------	-------------------------------	--------------------------------

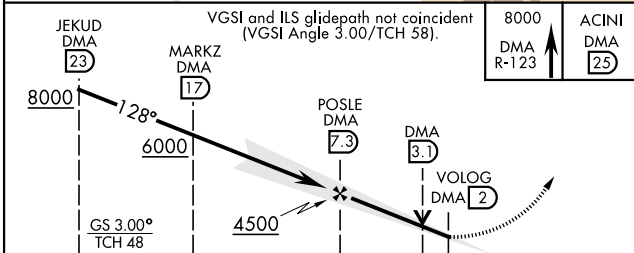


CAUTION: Para Jump operations in the vicinity of Pinal Airpark.

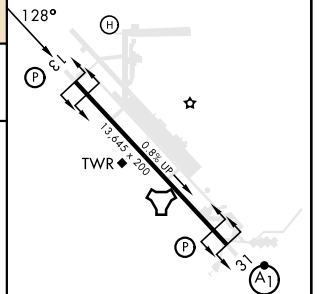
## EFFECTIVE BY NOTAM

DAVIS-MONTHAN  
Chan 123 DMA

EMERG SAFE ALT 100 NM 17,000



ELEV 2704	TDZE 2615
-----------	-----------



CATEGORY	A	B	C	D	E
S-ILS 13	2815/40 200 (200-¾)				
S-LOC 13	3160/55	545 (500-1)	3160-1½	545 (500-1½)	
CIRCLING*	3200-1 496 (500-1)	3220-1 516 (600-1)	3280-1½ 576 (600-1½)	3420-2¼ 716 (800-2¼)	3460-2¾ 756 (800-2¾)

HIRL Rwy 13-31 REIL Rwy 13 FAF to MAP 5.3 NM					
Knots	60	90	120	150	180
Min:Sec	5:18	3:32	2:39	2:07	1:46

TUCSON, ARIZONA  
Orig 05SEP24

32°10'N-110°53'W

DAVIS-MONTHAN AFB (KDMA)

# ILS or LOC Y RWY 13

SW-4, 05 SEP 2024 to 03 OCT 2024

SW-4, 05 SEP 2024 to 03 OCT 2024