

# HI-TACAN Z RWY 31

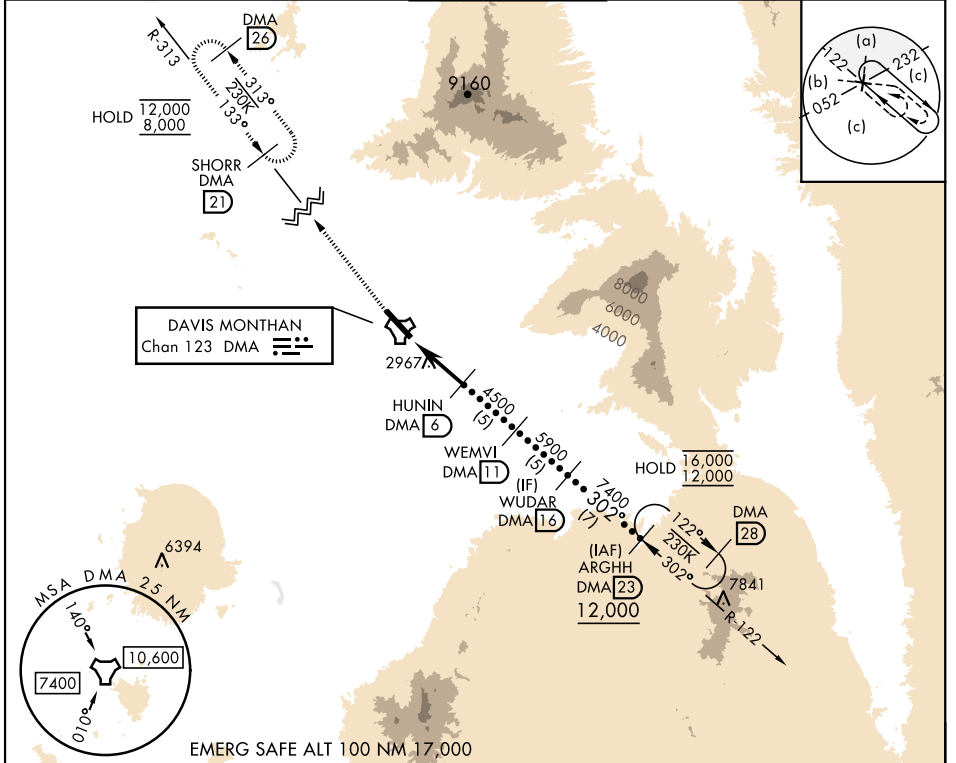
TACAN DMA Chan <b>123</b>	APCH CRS <b>302°</b>	Rwy ldg <b>13,645</b> TDZE <b>2704</b> Arprt Elev <b>2704</b>
------------------------------	-------------------------	---

[USAF]

DAVIS-MONTHAN AFB (KDMA)

<p>▼ * When ALS inop, increase vis to 2 miles. ** Circling not authorized SW of Rwy 13-31.</p>	<p>ALSF-1 <b>(A1)</b></p>	<p>MISSED APPROACH: Climb to 8000, intercept DMA TACAN R-313 to SHORR and hold, continue climb-in-hold to 8000.</p>
--	-------------------------------	---

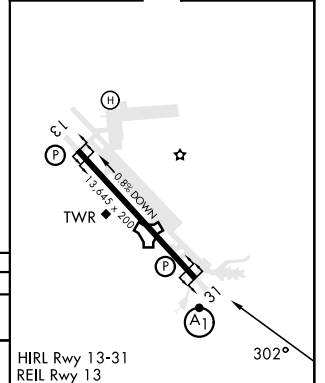
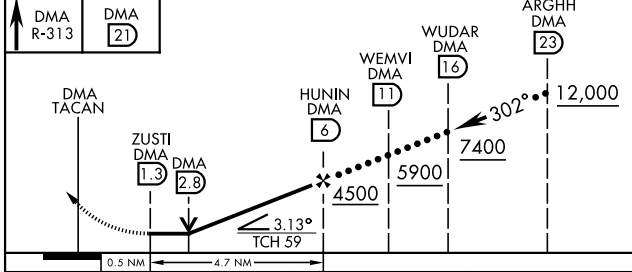
<p>ATIS★ <b>132.3 270.1</b></p>	<p>TUCSON APP CON 066°-274° <b>119.4 318.1</b> 275°-065° <b>125.1 269.55</b></p>	<p>TOWER <b>118.85 253.5</b></p>	<p>GND CON <b>121.8 275.8</b></p>	<p>CLNC DEL <b>121.8 275.8</b></p>
-------------------------------------	--	--------------------------------------	---------------------------------------	--



SW-4, 31 OCT 2024 to 28 NOV 2024

SW-4, 31 OCT 2024 to 28 NOV 2024

8000 DMA R-313	SHORR DMA (21)	ELEV 2704	TDZE 2704
-------------------	-------------------	-----------	-----------



CATEGORY	C	D	E
S-31*	3420-15%	716 (800-15%)	
CIRCLING**	3420-2 716 (800-2)	3420-2¼ 716 (800-2¼)	3460-2¾ 756 (800-2¾)

HIRL Rwy 13-31  
REIL Rwy 13

# HI-TACAN Z RWY 31