

TUCSON, ARIZONA

# HI-TACAN Z RWY 13

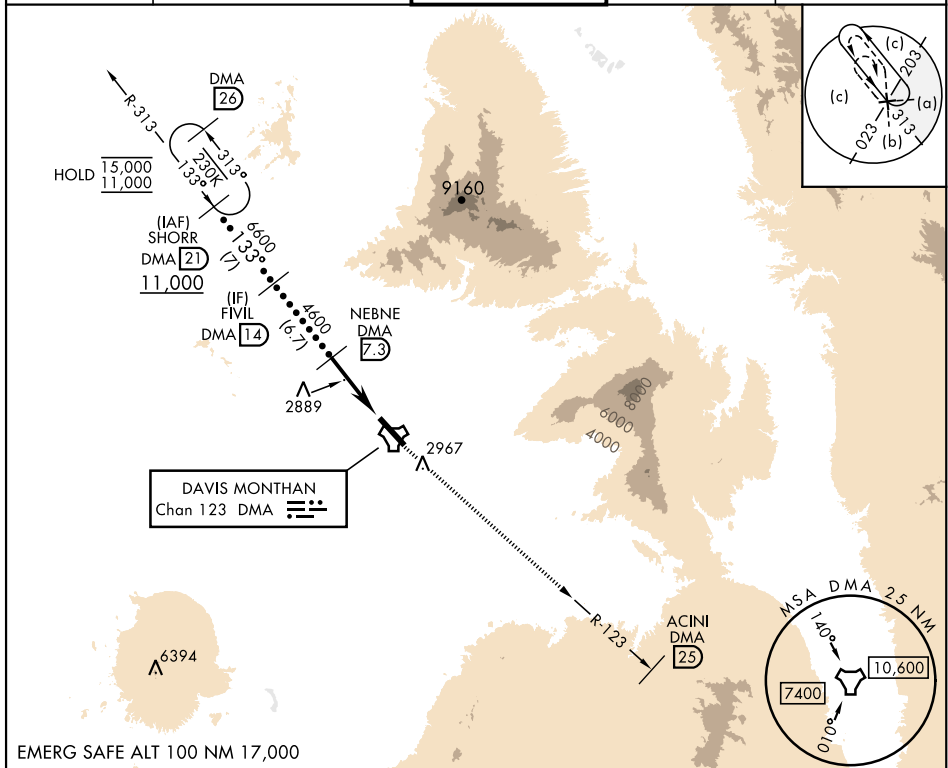
TACAN DMA Chan <b>123</b>	APCH CRS <b>133°</b>	Rwy Idg <b>13,645</b> TDZE <b>2615</b> Arprt Elev <b>2704</b>
------------------------------	-------------------------	---------------------------------------------------------------------

[USAF]

DAVIS-MONTHAN AFB (KDMA)

RADAR required	MISSED APPROACH: Climbing to 8000 intercept DMA TACAN R-123 to ACINI. Expect RADAR vectors.
▼ *Circling not authorized SW of Rwy 13-31.	

ATIS★ <b>132.3 270.1</b>	TUCSON APP CON 066°-274° <b>119.4 318.1</b> 275°-065° <b>125.1 269.55</b>	TOWER <b>118.85 253.5</b>	GND CON <b>121.8 275.8</b>	CLNC DEL <b>121.8 275.8</b>
-----------------------------	---------------------------------------------------------------------------------	------------------------------	-------------------------------	--------------------------------

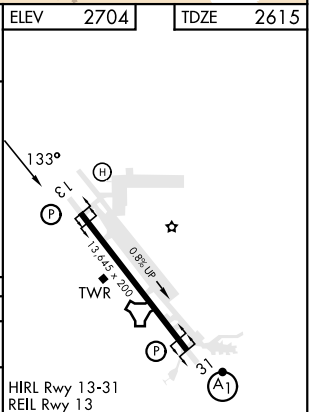


SW-4, 31 OCT 2024 to 28 NOV 2024

SW-4, 31 OCT 2024 to 28 NOV 2024

EMERG SAFE ALT 100 NM 17,000

	8000 DMA R-123	ACINI DMA 25	ELEV 2704	TDZE 2615
	SHORR DMA 2 11,000	FIVIL DMA 14 6,600	NEBNE DMA 7.3 4,600	DMA ESACLE 2 DMA TACAN
	133°		3.17° TCH 58	5.3 NM
CATEGORY	C	D	E	
S-13	3160-1½	545	(500-1½)	
CIRCLING*	3280-1½ 576 (600-1½)	3420-2¼ 716 (800-2¼)	3460-2¾ 756 (800-2¾)	
	TUCSON, ARIZONA			DAVIS-MONTHAN AFB (KDMA)
	Orig 31OCT24			



TUCSON, ARIZONA

32°10'N-110°53'W

DAVIS-MONTHAN AFB (KDMA)

Orig 31OCT24

# HI-TACAN Z RWY 13