

HI-TACAN Z RWY 12

TACAN DMA Chan 123	APCH CRS 130°	Rwy ldg 13,645 TDZE 2615 Arpt Elev 2704
------------------------------	-------------------------	--

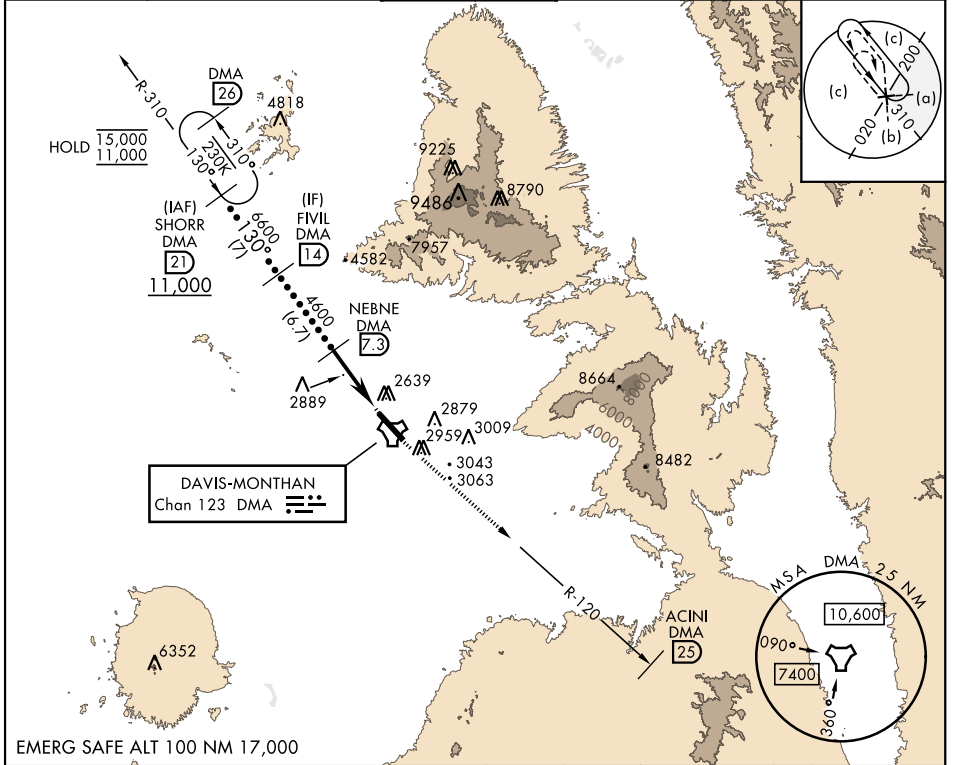
AL-429 [USAF]

DAVIS-MONTHAN AFB (KDMA)

RADAR required
* Circling not authorized S of Rwy 12-30.

MISSED APPROACH: Climbing to 8000 intercept DMA TACAN R-120 to ACINI. Expect RADAR vectors.

ATIS* 270.1	TUCSON APP CON 125.1 269.55 (090° - 285°) 119.4 318.1 (286° - 089°)	TOWER 118.85 253.5	GND CON 121.8 275.8	CLNC DEL 121.8 275.8
-----------------------	---	------------------------------	-------------------------------	--------------------------------



	SHORR DMA (21) 11,000	FIVIL DMA (14) 6,600	NEBNE DMA (7.3) 4,600	DMA (3.1) ESALE DMA (2.1) 3,170	TACAN 2,704	ACINI DMA (25) 2,615
				5.2 NM	0.6 NM	
CATEGORY	C	D	E			
S-12	3160-1½	545 (500-1½)				
CIRCLING*	3280-1½ 576 (600-1½)	3420-2¼ 716 (800-2¼)	3460-2¾ 756 (800-2¾)			
				HIRL Rwy 12-30		
				REIL Rwy 12		

HI-TACAN Z RWY 12

SW-4, 03 OCT 2024 to 31 OCT 2024

SW-4, 03 OCT 2024 to 31 OCT 2024