

HI-ILS Z or LOC Z RWY 31

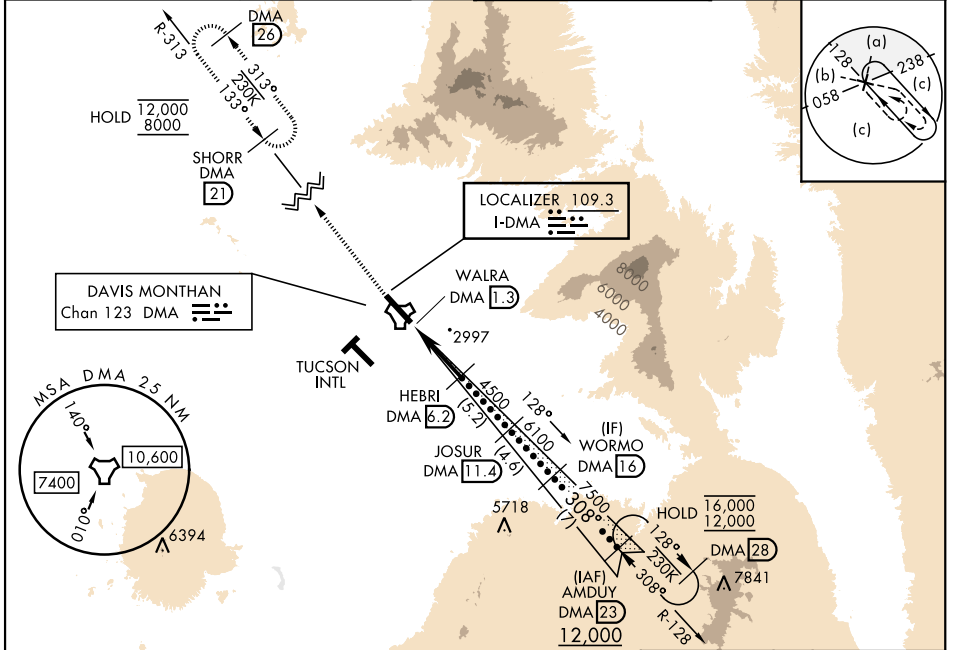
LOC I-DMA 109.3	APCH CRS 308°	Rwy Idg 13,645 TDZE 2704 Arprt Elev 2704
---------------------------	-------------------------	---

[USAF]

DAVIS-MONTHAN AFB (KDMA)

DME or RADAR required	ALSF-1 	MISSED APPROACH: Climb to 8000, intercept DMA TACAN R-313 to SHORR and hold, continue climb-in-hold to 8000.
<ul style="list-style-type: none"> * When ALS inop, increase RVR to 40, vis to 3/4 mile. ** When ALS inop, increase vis to 2 miles. *** Circling not authorized SW of Rwy 13-31. 		

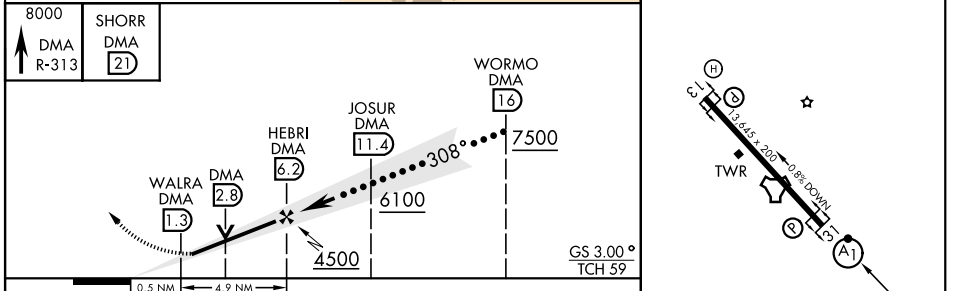
ATIS * 132.3 270.1	TUCSON APP CON 066°-274° 119.4 318.1 275°-065° 125.1 269.55	TOWER 118.85 253.5	GND CON 121.8 275.8
------------------------------	---	------------------------------	-------------------------------



SW-4, 11 JUN 2026 to 09 JUL 2026

SW-4, 11 JUN 2026 to 09 JUL 2026

ELEV	2704	TDZE	2704
------	------	------	------



CATEGORY	C	D	E
S-ILS 31*	2904/24	200	(200-1/2)
S-LOC 31**	3400-1 1/2	696	(700-1 1/2)
CIRCLING***	3400-2 696 (700-2)	3420-2 1/4 716 (800-2 1/4)	3460-2 3/4 756 (800-2 3/4)

HIRL Rwy 13-31 REIL Rwy 13	FAF to MAP 4.9 NM					
	Knots	120	140	160	180	200
	Min:Sec	2:27	2:06	1:50	1:38	1:28

HI-ILS Z or LOC Z RWY 31