

HI-ILS Z or LOC Z RWY 13

LOC I-AFB 109.3	APCH CRS 128°	Rwy Idg 13,645 TDZE 2615 Arprt Elev 2704
---------------------------	-------------------------	---

[USAF]

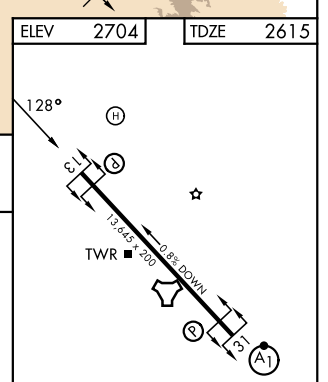
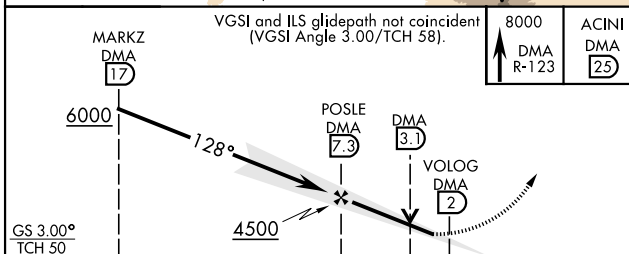
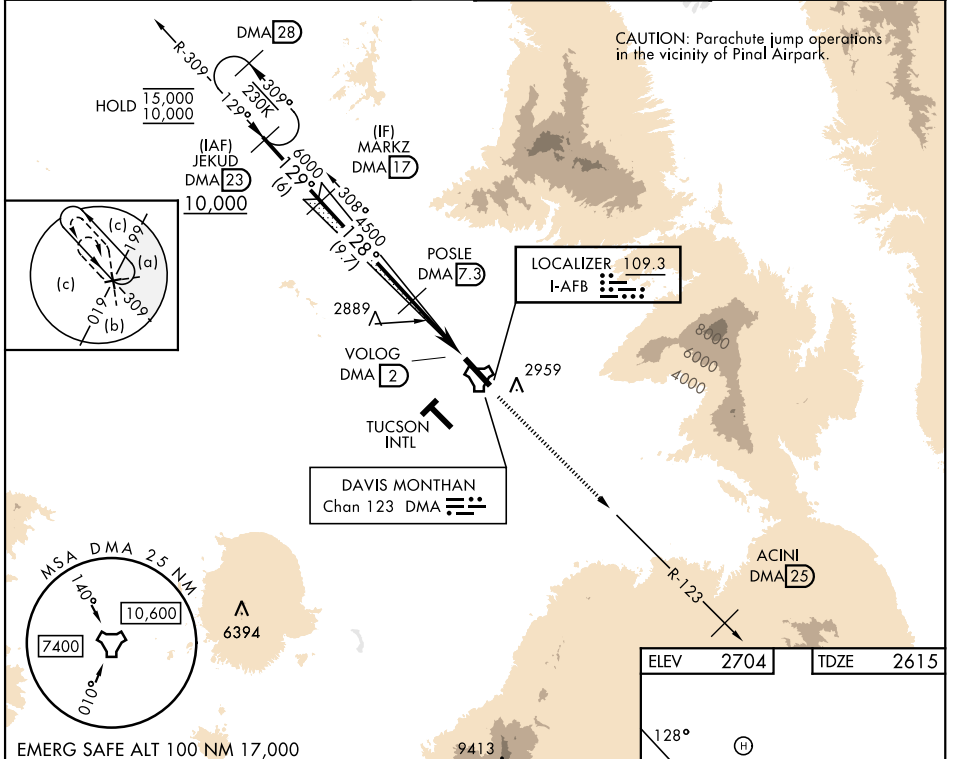
DAVIS-MONTHAN AFB (KDMA)

DME or RADAR required

*** Circling not authorized SW of Rwy 13-31.**

MISSED APPROACH: Climbing to 8000 intercept DMA TACAN R-123 to ACINI. Expect RADAR vectors.

ATIS ★ 132.3 270.1	TUCSON APP CON 066°-274° 119.4 318.1 275°-065° 125.1 269.55	TOWER 118.85 253.5	GND CON 121.8 275.8
------------------------------	---	------------------------------	-------------------------------



CATEGORY	C	D	E
S-ILS 13	2815/40	200 (200-¾)	
S-LOC 13	3160-1½	545 (500-1½)	
CIRCLING *	3260-1½ 556 (600-1½)	3420-2¼ 716 (800-2¼)	3460-2¾ 756 (800-2¾)

FAF to MAP 5.3 NM					
Knots	120	140	160	180	200
Min:Sec	2:39	2:16	1:59	1:46	1:35

HI-ILS Z or LOC Z RWY 13

SW-4, 11 JUN 2026 to 09 JUL 2026

SW-4, 11 JUN 2026 to 09 JUL 2026