

DAVIS MONTHAN TWO DEPARTURE (DMA2•DMA)

DAVIS-MONTHAN AFB (KDMA)

TUCSON, ARIZONA

DME required

AL-429 [USAF]

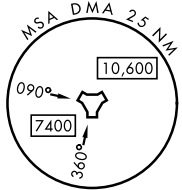
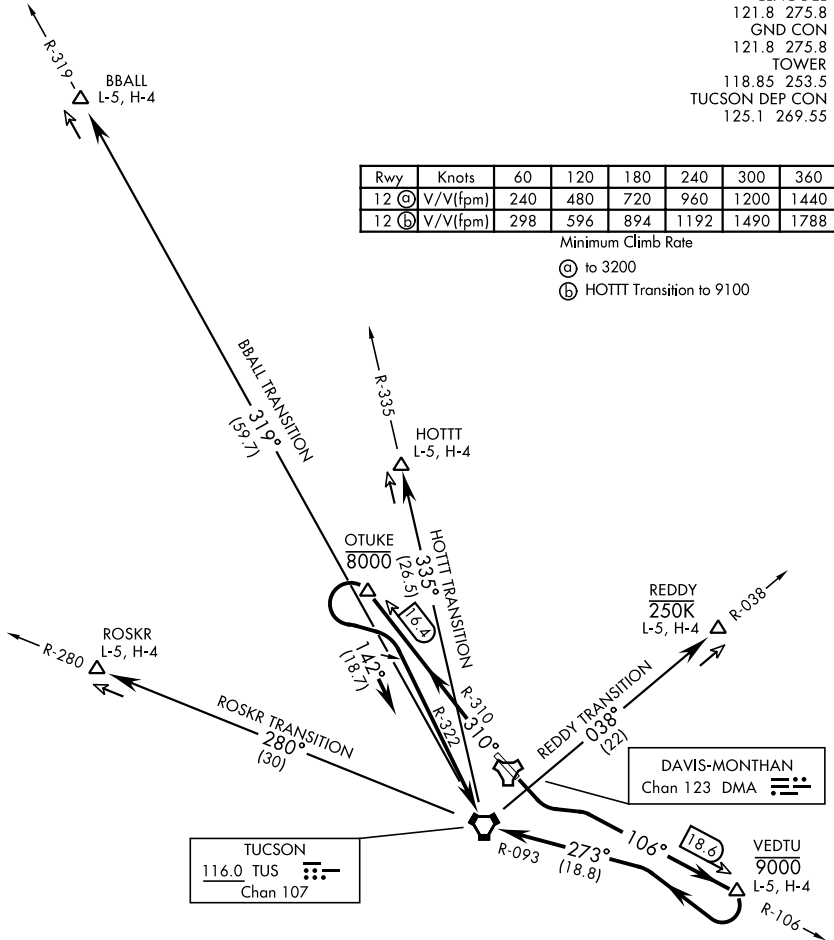
ATIS ★ 270.1
 CLNC DEL
 121.8 275.8
 GND CON
 121.8 275.8
 TOWER
 118.85 253.5
 TUCSON DEP CON
 125.1 269.55

Rwy	Knots	60	120	180	240	300	360
12 (A)	V/V(fpm)	240	480	720	960	1200	1440
12 (B)	V/V(fpm)	298	596	894	1192	1490	1788

Minimum Climb Rate

(A) to 3200

(B) HOTTT Transition to 9100



During RADAR operations aircraft will receive RADAR vectors to appropriate transition.

(NARRATIVE ON FOLLOWING PAGE)

DAVIS MONTHAN TWO DEPARTURE (DMA2•DMA)

TUCSON, ARIZONA

SW-4, 03 OCT 2024 to 31 OCT 2024

SW-4, 03 OCT 2024 to 31 OCT 2024