

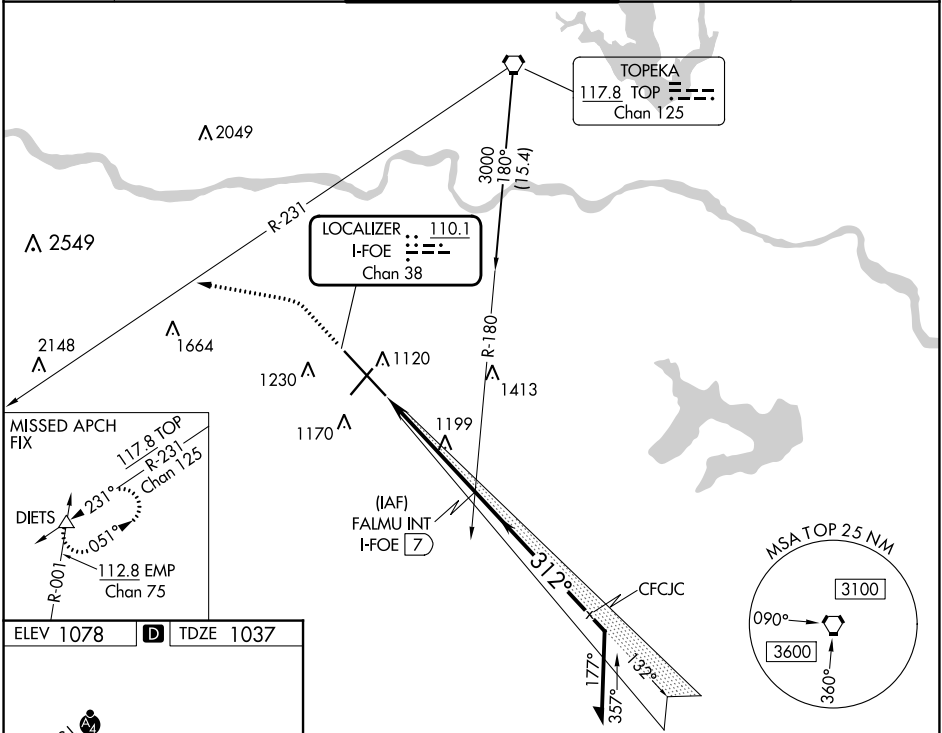
LOC/DME I-FOE <b>110.1</b> Chan <b>38</b>	APP CRS <b>312°</b>	Rwy Idg <b>12803</b> TDZE <b>1037</b> Apt Elev <b>1078</b>
---	------------------------	--

# ILS or LOC RWY 31

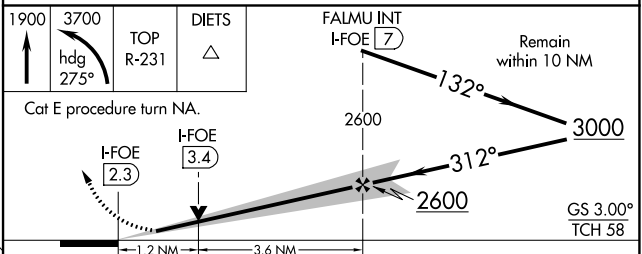
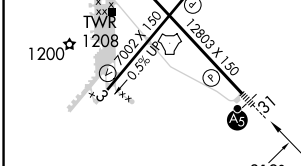
TOPEKA RGNL (FOE)

<b>⚠</b> For inop ALS, increase S-ILS Cat E visibility to RVR 4000 and S-LOC Cat E visibility to 1¼ SM. <b>*RVR 1800 authorized with use of FD or AP or HUD to DA.</b>		<b>MALSR</b> 	<b>MISSED APPROACH:</b> Climb to 1900 then climbing left turn to 3700 on heading 275° and on TOP VORTAC R-231 to DIETS INT and hold.
---	--	------------------	--

ATIS <b>128.25</b>	KANSAS CITY CENTER <b>123.8 343.7</b>	FORBES TOWER* <b>120.8 (CTAF) 0 340.2</b>	GND CON <b>118.425 275.8</b>	UNICOM <b>122.95</b>
-----------------------	--	--	---------------------------------	-------------------------



ELEV 1078	<b>D</b> TDZE 1037
-----------	--------------------



REIL Rws 3, 13 and 21 MIRL Rwy 3-21 HIRL Rwy 13-31 FAF to MAP 4.7 NM	CATEGORY	A	B	C	D	E
Knots: 60, 90, 120, 150, 180 Min:Sec: 4:42, 3:08, 2:21, 1:53, 1:34	S-ILS 31*	1237/24 200 (200-½)				
	S-LOC 31	1460/24 423 (400-½)	1460/40 423 (400-¾)			
<b>C</b> CIRCLING		1520-1 442 (500-1)	1580-1 502 (600-1)	1580-1½ 502 (600-1½)	1700-2 622 (700-2)	1720-2¼ 642 (700-2¼)

NC-2, 05 SEP 2024 to 03 OCT 2024

NC-2, 05 SEP 2024 to 03 OCT 2024