

HI-TACAN RWY 31

TACAN FOE Chan 53	APCH CRS 304°	Rwy ldg 12,803 TDZE 1037 Arprt Elev 1078
-----------------------------	-------------------------	---

[USAF]

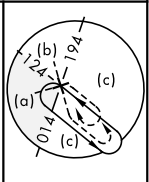
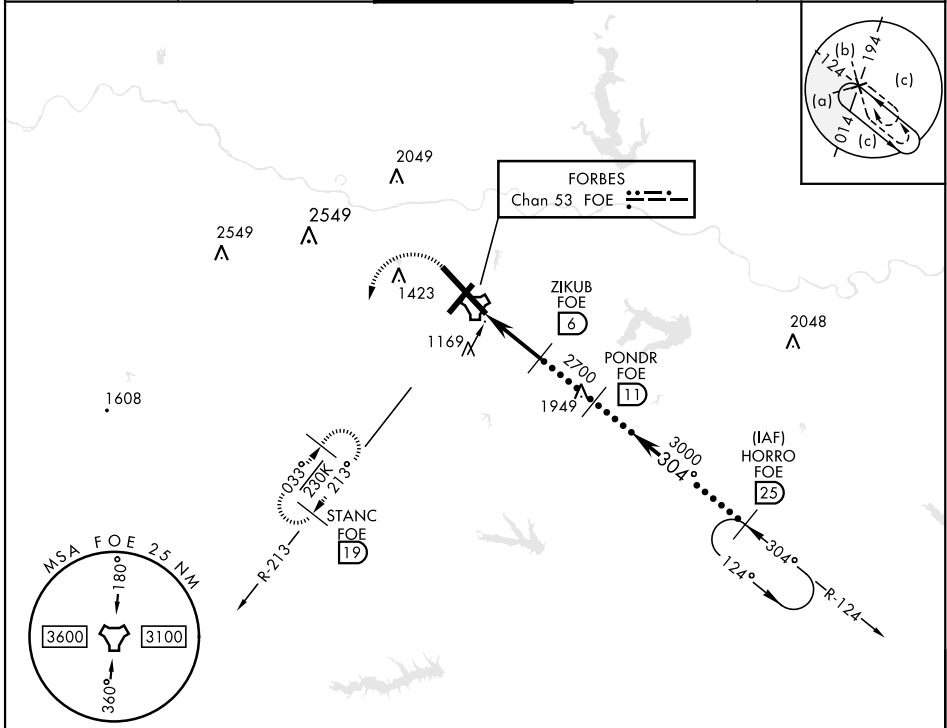
TOPEKA RGNL (KFOE)

M * When ALS inop, increase CAT CDE vis to 1½ miles.

MALS R 

MISSED APPROACH: Climbing left turn to 3000 via heading 190° and FOE TACAN R-213 to STANC/19 DME and hold.

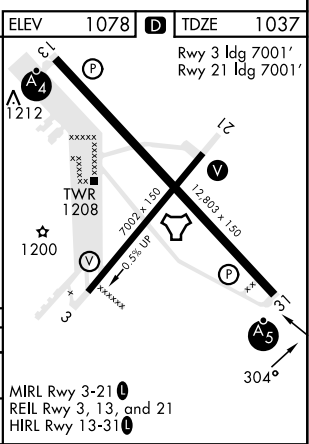
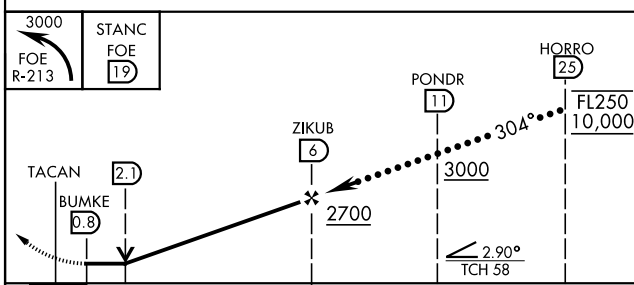
ATIS 128.25	KANSAS CITY CENTER 123.8 343.7	FORBES TOWER ★ 120.8 (CTAF) 340.2	GND CON 118.425 275.8	UNICOM 122.95
-----------------------	--	---	---------------------------------	-------------------------



NC-2, 05 SEP 2024 TO 03 OCT 2024

NC-2, 05 SEP 2024 TO 03 OCT 2024

EMERG SAFE ALT 100 NM 3600



CATEGORY	C	D	E
S-31 *	1520/50	483 (500-1)	
CIRCLING	1580-1½ 502 (600-1½)	1700-2 622 (700-2)	1720-2¼ 642 (700-2¼)

HI-TACAN RWY 31