

WAAS CH <b>58017</b> W06A	APP CRS <b>057°</b>	Rwy Idg TDZE Apt Elev	<b>4479</b> <b>367</b> <b>374</b>
---------------------------------	------------------------	-----------------------------	---

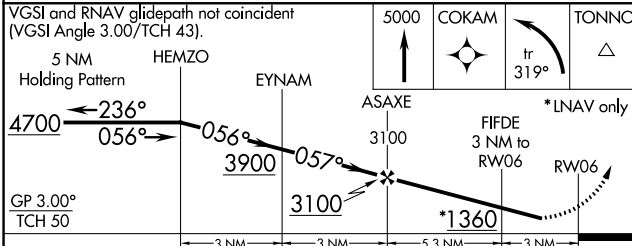
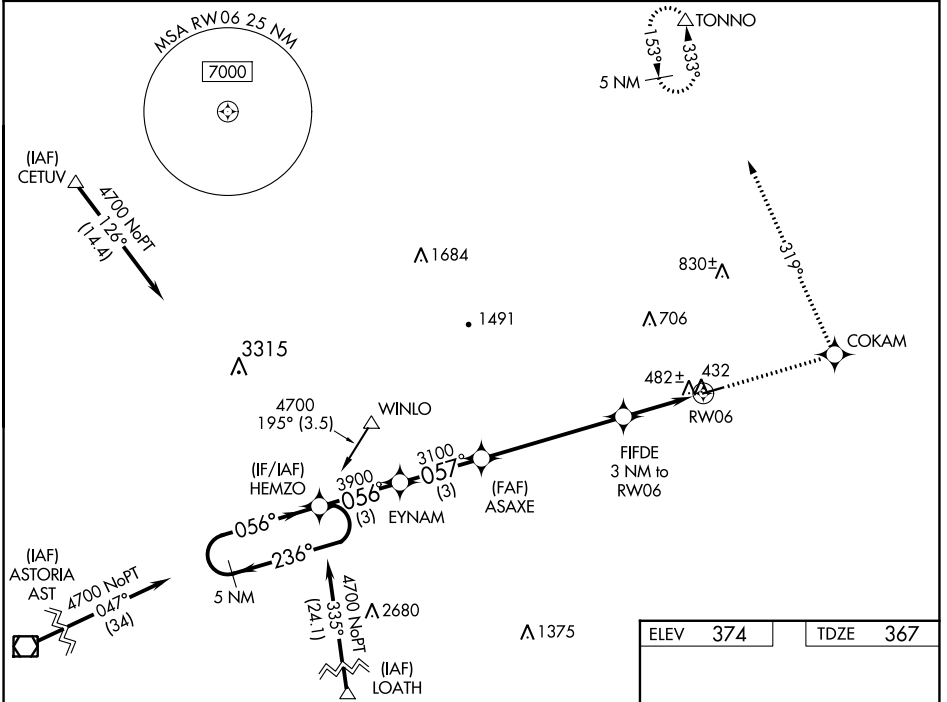
# RNAV (GPS) RWY 6

ED CARLSON MEML FLD/SOUTH LEWIS COUNTY (TDO)

**NA** Circling NA at night. Baro-VNAV NA. DME/DME RNP-0.3 NA. Visibility reduction by helicopters NA. Use Chehalis altimeter setting, when not received use Kelso altimeter setting and increase LPV DA to 807 feet; LNAV/VNAV DA to 853 feet; increase all MDA's 40 feet.

**MISSED APPROACH:** Climb to 5000 direct COKAM and left turn on track 319° to TONNO and hold, continue climb-in-hold to 5000.

SEATTLE CENTER <b>124.2 317.6</b>	CTAF <b>122.9</b>
--------------------------------------	----------------------

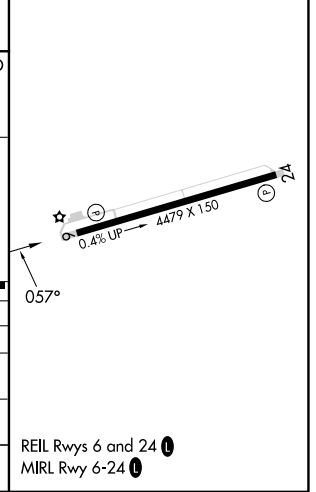


ELEV	374	TDZE	367
------	-----	------	-----

VGSI and RNAV glidepath not coincident (VGSI Angle 3.00/TCH 43).

5 NM Holding Pattern	HEMZO	EYNAM	ASAXE	FIFDE 3 NM to RW06	RW06
4700	3900	3100	3100	1360	
GP 3.00°					
TCH 50					

CATEGORY	A	B	C	D
LPV DA		767-1½	400 (400-1½)	
LNAV/VNAV DA		813-1½	446 (500-1½)	
LNAV MDA	800-1	433 (500-1)	800-1¼ 433 (500-1¼)	800-1½ 433 (500-1½)
CIRCLING	900-1	526 (600-1)	1060-2 686 (700-2)	1280-3 906 (1000-3)



NW-1, 08 AUG 2024 to 05 SEP 2024

NW-1, 08 AUG 2024 to 05 SEP 2024

REIL Rwy 6 and 24  
MIRL Rwy 6-24