

TAMPA, FLORIDA

ILS or LOC RWY 23

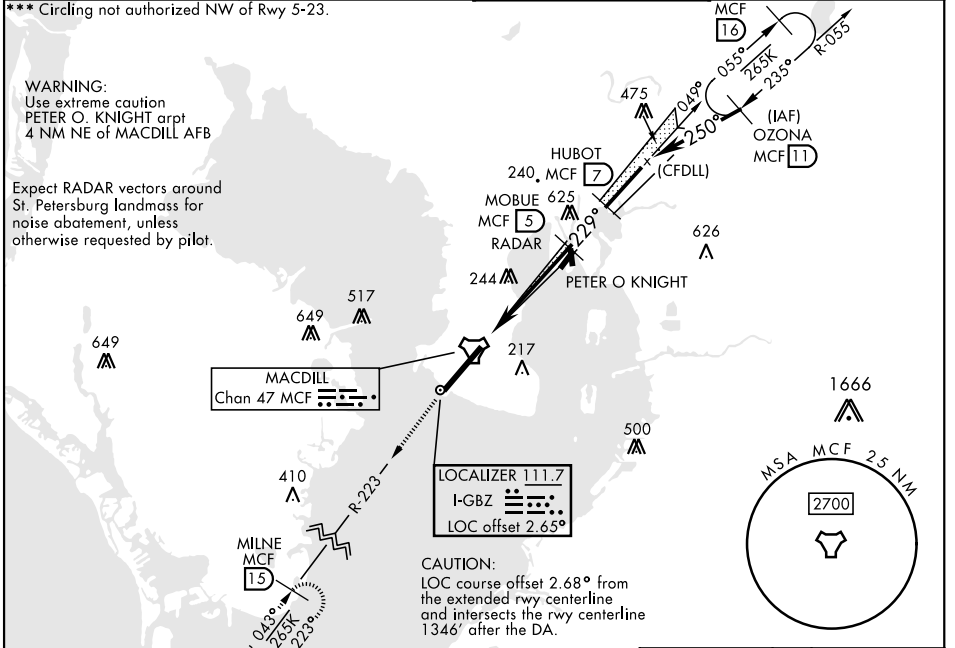
LOC I-GBZ 111.7	APCH CRS 229°	Rwy Idg 11,421 TDZE 14 Arpt Elev 14
---------------------------	-------------------------	--

AL-418 [USAF]

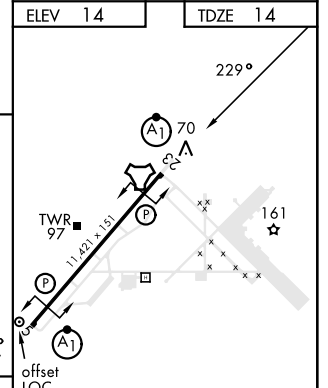
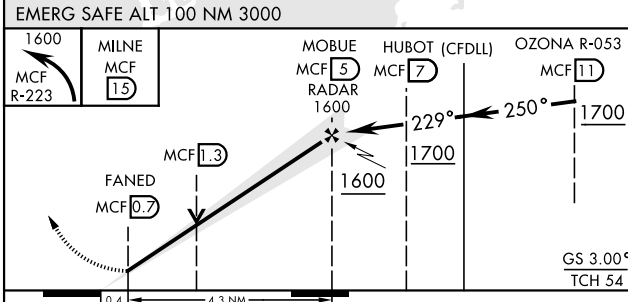
MACDILL AFB (KMCF)

RADAR or DME required.	ALSF-1 	MISSED APPROACH: Climb to 1600 via MCF R-223 to MILNE and hold. RNAV or ATC RADAR required for missed approach.
* When ALS inop, increase RVR to 40, vis to ¼ mile. ** When ALS inop, increase CAT AB RVR to 55, vis to 1 mile; CAT CDE vis to 1 ½ miles.		

ATIS 133.825 270.1	TAMPA APP CON 124.95 354.0	TOWER 120.175 294.7	GND CON 118.575 275.8
------------------------------	--------------------------------------	-------------------------------	---------------------------------



ELEV 14	TDZE 14
---------	---------



CATEGORY	A	B	C	D	E
S-ILS 23*	264/24		250	(300-½)	
S-LOC 23**	440/24	426 (500-½)	440/40	426 (500-¾)	
*** CIRCLING	500-1	540-1	540-1½	580-2	1020-3
	486 (500-1)	526 (600-1)	526 (600-1½)	566 (600-2)	1006(1100-3)

FAF to MAP 4.3 NM					
Knots	60	90	120	150	180
Min:Sec	4:18	2:52	2:09	1:43	1:26

TAMPA, FLORIDA
Amdt 2 10AUG23

27°51'N-82°31'W

MACDILL AFB (KMCF)

ILS or LOC RWY 23

SE-3, 28 NOV 2024 to 26 DEC 2024

SE-3, 28 NOV 2024 to 26 DEC 2024