


WAAS CH <b>40406</b> <b>W19B</b>	APP CRS <b>187°</b>	Rwy ldg <b>11002</b> TDZE <b>21</b> Apt Elev <b>26</b>
--	------------------------	--

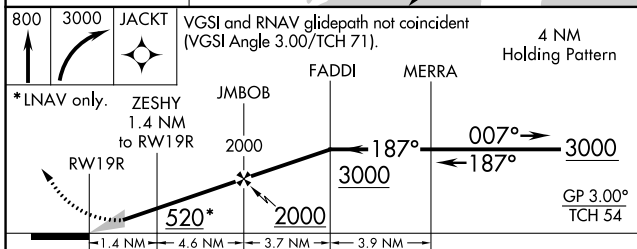
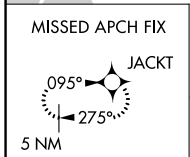
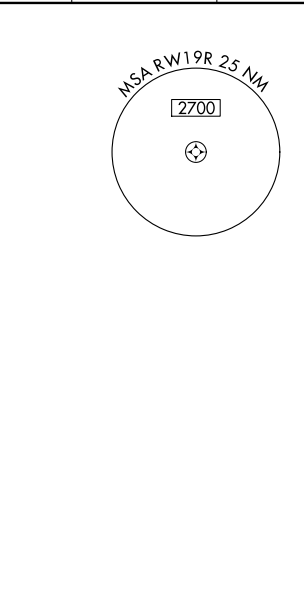
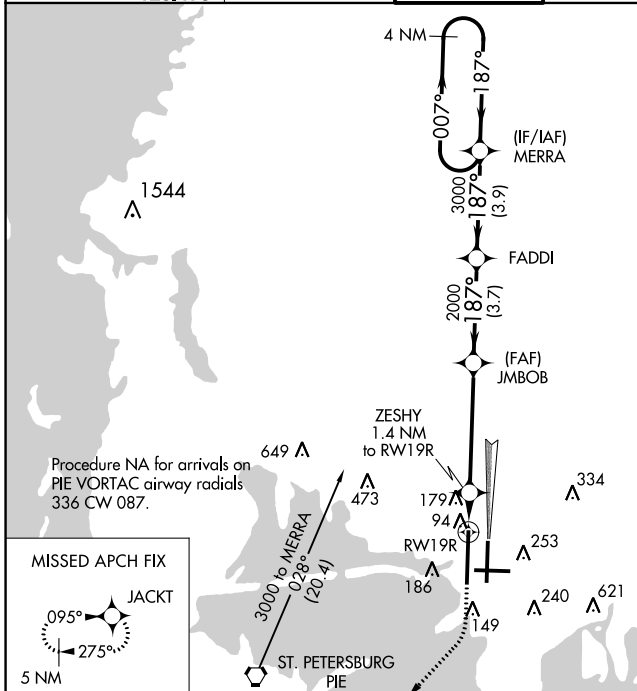
# RNAV (GPS) RWY 19R

TAMPA INTL (TPA)

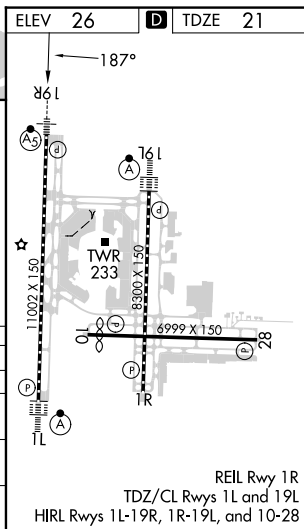
**⚠** For uncompensated Baro-VNAV systems, LNAV/VNAV NA below -15°C (5°F) or above 43°C (109°F). DME/DME RNP-0.3 NA. For inop MALSR, increase LPV Cat E visibility to ¾ mile, LNAV/VNAV Cat E visibility to 1½ mile, and LNAV Cat E visibility to 1½. Simultaneous approach authorized with Rwy 19L. LNAV procedure NA during simultaneous operations. Use of FD or AP providing RNAV track guidance required during simultaneous operations. \*\*RVR 1800 authorized with use of FD or AP or HUD to DA.

**MALSR**  
  
**MISSED APPROACH:** Climb to 800 then climbing right turn to 3000 direct JACKT and hold, continue climb-in-hold to 3000.

ARR <b>126.45</b>	D-ATIS	DEP <b>128.475</b>	TAMPA APP CON <b>118.5 307.175</b>	TAMPA TOWER <b>119.5 269.4</b>	GND CON <b>121.7 269.4</b>	CLNC DEL <b>133.6</b>	CPDLC
----------------------	--------	-----------------------	---------------------------------------	-----------------------------------	-------------------------------	--------------------------	-------



800	3000	JACKT	VGSi and RNAV glidepath not coincident (VGSi Angle 3.00/TCH 71).				
*LNAV only.		ZESHY 1.4 NM to RW19R	JMBOB	FADDI	MERRA		
CATEGORY	A	B	C	D	E		
LPV DA**	221/24		200 (200-½)				
LNAV/VNAV DA	466/50		445 (500-1)				
LNAV MDA	440/24	419 (500-½)	440/40		419 (500-¾)		
<b>C</b> CIRCLING	560-1	534 (600-1)	680-1¾ 654 (700-1¾)	980-3	954 (1000-3)		



REIL Rwy 1R  
TDZ/CL Rwys 1L and 19L  
HIRL Rwys 1L-19R, 1R-19L, and 10-28

SE-3, 03 OCT 2024 to 31 OCT 2024

SE-3, 03 OCT 2024 to 31 OCT 2024