

# KNOST TWO DEPARTURE (RNAV)

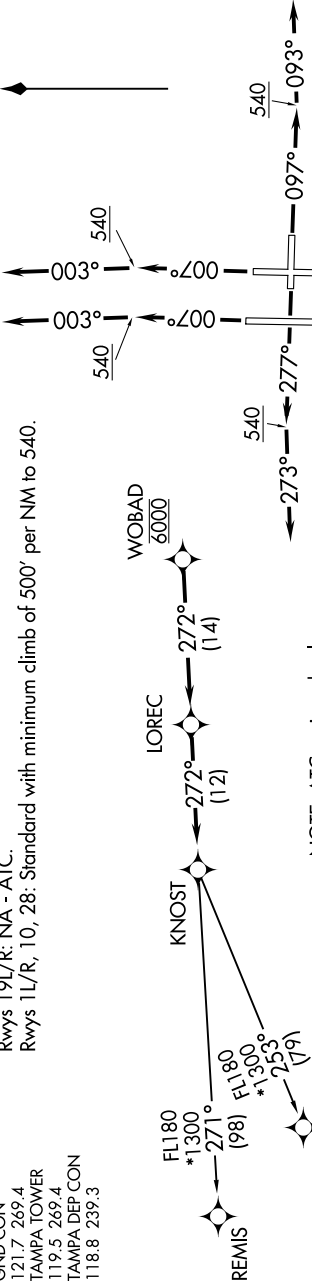
SE-3, 03 OCT 2024 to 31 OCT 2024

D-ATIS DEP 128.475  
 CLNC DEL 133.6  
 GPDIC 121.7 269.4  
 GND CON TAMPA TOWER 119.5 269.4  
 TAMPA DEP CON 118.8 239.3

**TAKEOFF MINIMUMS**  
 Rwy 19L/R: NA - ATC.  
 Rwy 11L/R, 10, 28: Standard with minimum climb of 500' per NM to 540.

**TOP ALTITUDE:**  
**6000**

RNAV 1 - GPS. GPS required.  
 RADAR required.



NOTE: ATC assigned only.  
 NOTE: Jets only.

NOTE: Chart not to scale.



## DEPARTURE ROUTE DESCRIPTION

**TAKEOFF RUNWAYS 1L/R:** Climb on heading 007° to 540, then on heading 003° or as assigned by ATC, for vectors to cross WOBAD at 6000 thence . . . . .  
**TAKEOFF RUNWAY 10:** Climb on heading 097° to 540, then on heading 093° or as assigned by ATC, for vectors to cross WOBAD at 6000 thence . . . . .  
**TAKEOFF RUNWAY 28:** Climb on heading 277° to 540, then on heading 273° or as assigned by ATC, for vectors to cross WOBAD at 6000 thence . . . . .

. . . . . on track 272° to LOREC, then on track 272° to KNOST. Expect clearance to filed altitude within ten minutes after departure.

CIGAR TRANSITION (KNOST2.CIGAR)  
REMIS TRANSITION (KNOST2.REMIS)

SE-3, 03 OCT 2024 to 31 OCT 2024