

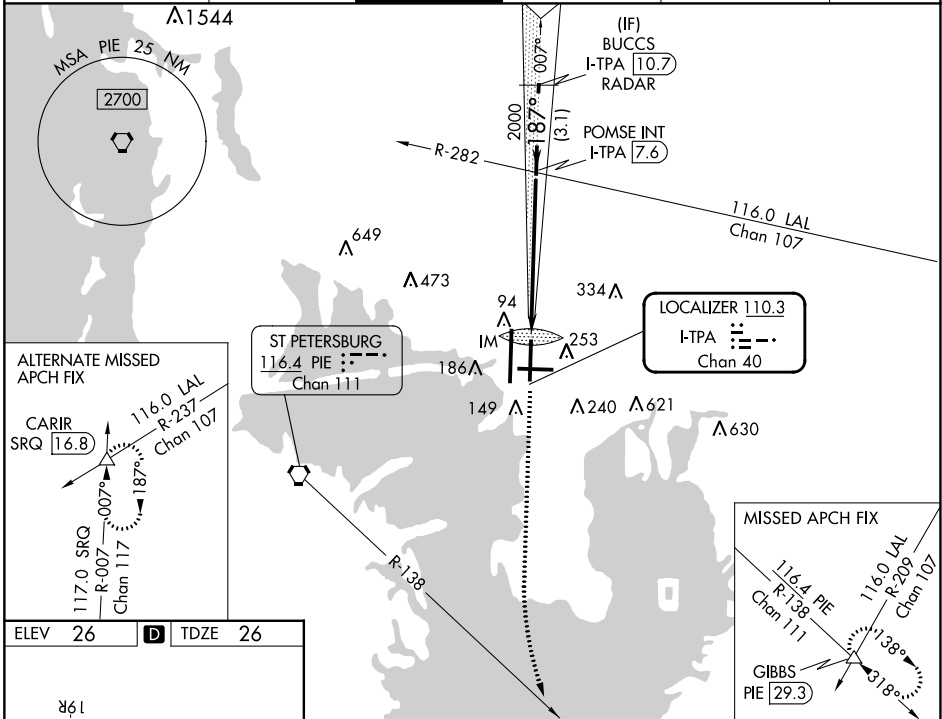
LOC/DME I-TPA <b>110.3</b> Chan 40	APP CRS <b>187°</b>	Rwy Idg TDZE Apt Elev	<b>8300</b> <b>26</b> <b>26</b>
--	------------------------	-----------------------------	---------------------------------------

# ILS RWY 19L (SA CAT I)

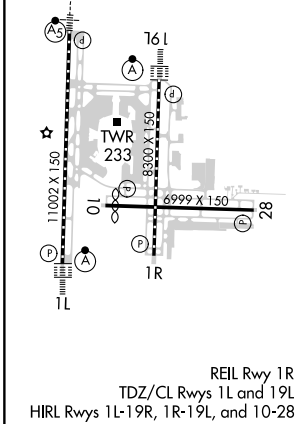
TAMPA INTL (TPA)

RADAR required for procedure entry.		ALSF-2	MISSED APPROACH: Climb to 600 then climbing left turn to 2800 on heading 160° and on PIE VORTAC R-138 to GIBBS INT/PIE 29.3 DME and hold.
<p>Simultaneous approach authorized. Requires specific OPSPEC, MSPEC, or LOA approval.</p>			

ARR	D-ATIS	DEP	TAMPA APP CON	TAMPA TOWER	GND CON	CLNC DEL	CPDLC
126.45		128.475	118.5 307.175	119.5 269.4	121.7 269.4	133.6	



ELEV 26	<b>D</b>	TDZE 26
---------	----------	---------



600	2800	PIE R-138	GIBBS	VGSI and ILS glidepath not coincident (VGSI Angle 3.00/TCH 61).
CATEGORY	A	B	C	D
S-ILS 19L	RA 150/14	150	DA 176	

**SA CATEGORY I ILS- SPECIAL AIRCREW & AIRCRAFT CERTIFICATION REQUIRED**

SE-3, 18 APR 2024 to 16 MAY 2024

SE-3, 18 APR 2024 to 16 MAY 2024