

TAMPA, FLORIDA

AL-416 (FAA)

24193

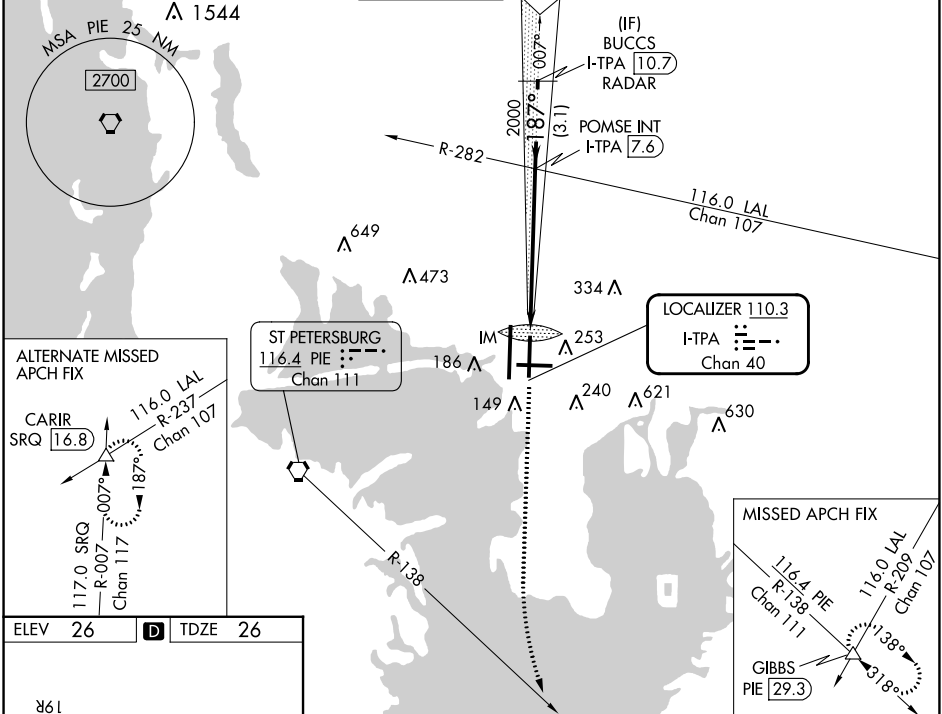
LOC/DME I-TPA 110.3 Chan 40	APP CRS 187°	Rwy Idg 8300 TDZE 26 Apt Elev 26
--	------------------------	---

ILS RWY 19L (CAT II)

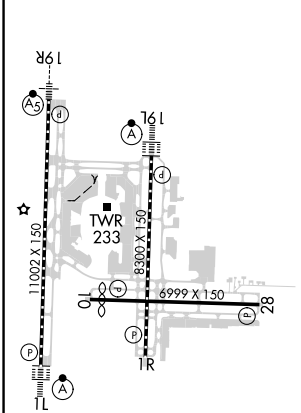
TAMPA INTL (TPA)

RADAR required for procedure entry. Simultaneous approach authorized. RVR 1000 authorized with specific OPSPEC, MSPEC, or LOA approval and use of autoland or HUD to touchdown.		ALSF-2 	MISSED APPROACH: Climb to 600 then climbing left turn to 2800 on heading 160° and on PIE VORTAC R-138 to GIBBS INT/PIE 29.3 DME and hold.
--	--	------------	--

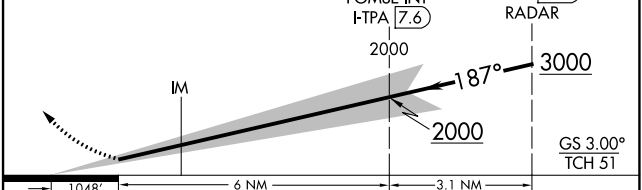
ARR 126.45	D-ATIS 128.475	DEP 118.5 307.175	TAMPA APP CON 119.5 269.4	TAMPA TOWER 119.5 269.4	GND CON 121.7 269.4	CLNC DEL 133.6	CPDLC
----------------------	--------------------------	-----------------------------	-------------------------------------	-----------------------------------	-------------------------------	--------------------------	-------



ELEV 26	D	TDZE 26
---------	----------	---------



600	2800	PIE R-138	GIBBS	VGSI and ILS glidepath not coincident (VGSI Angle 3.00/TCH 61).
-----	------	-----------	-------	---



CATEGORY	A	B	C	D
S-ILS 19L	RA 101/12	100	DA 126	

CATEGORY II ILS - SPECIAL AIRCREW & AIRCRAFT CERTIFICATION REQUIRED

REIL Rwy 1R
 TDZ/CL Rwy 1L and 19L
 HIRL Rwy 1L-19R, 1R-19L, and 10-28

TAMPA, FLORIDA
 Amdt 41 20APR23

27°59'N-82°32'W

TAMPA INTL (TPA)

ILS RWY 19L (CAT II)

SE-3, 03 OCT 2024 to 31 OCT 2024

SE-3, 03 OCT 2024 to 31 OCT 2024