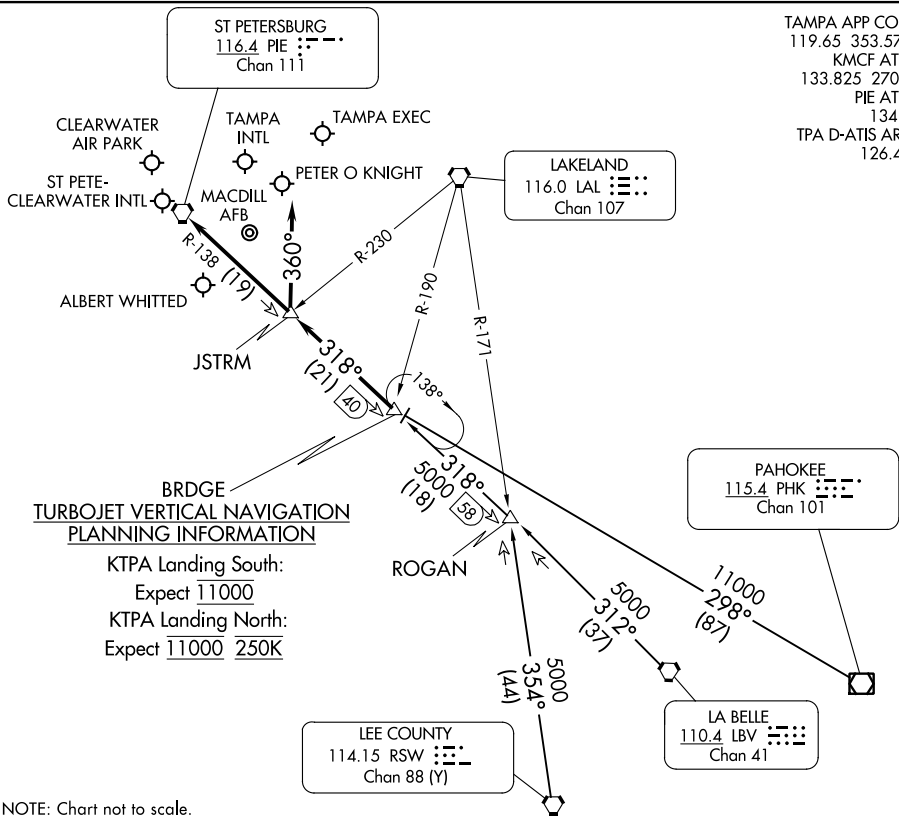


# BRDGE NINE ARRIVAL

TAMPA, FLORIDA



TAMPA APP CON  
 119.65 353.575  
 KMCF ATIS  
 133.825 270.1  
 PIE ATIS  
 134.5  
 TPA D-ATIS ARR  
 126.45

### TURBOJET VERTICAL NAVIGATION PLANNING INFORMATION

KTPA Landing South:  
 Expect 11000  
 KTPA Landing North:  
 Expect 11000 250K

NOTE: Chart not to scale.

### ARRIVAL ROUTE DESCRIPTION

**LA BELLE TRANSITION (LBV.BRDGE9):** From over LBV VORTAC on LBV R-312 and PIE R-138 to BRDGE thence. . . .

**LEE COUNTY TRANSITION (RSW.BRDGE9):** From over RSW VORTAC on RSW R-354 to ROGAN, then on PIE R-138 to BRDGE thence. . . .

**PAGOKEE TRANSITION (PHK.BRDGE9):** From over PHK VOR/DME on PHK R-298 to BRDGE thence. . . .

**KTPA:**  
**RUNWAYS 19L/R:** From over BRDGE on PIE R-138 to JSTRM. Depart JSTRM heading 360° for RADAR vectors to final approach course.  
**RUNWAYS 1L/R:** From over BRDGE on PIE R-138 to PIE VORTAC. Expect RADAR vectors to final approach course after BRDGE.

**KPIE, KCLW, KTPF, KSPG, KMCF, KVDF:**  
 From over BRDGE on PIE R-138 to PIE VORTAC. Expect RADAR vectors to final approach course/airport after BRDGE.

**LOST COMMUNICATIONS:** Standard.

SE-3, 21 MAR 2024 to 18 APR 2024

SE-3, 21 MAR 2024 to 18 APR 2024

# BRDGE NINE ARRIVAL

TAMPA, FLORIDA