

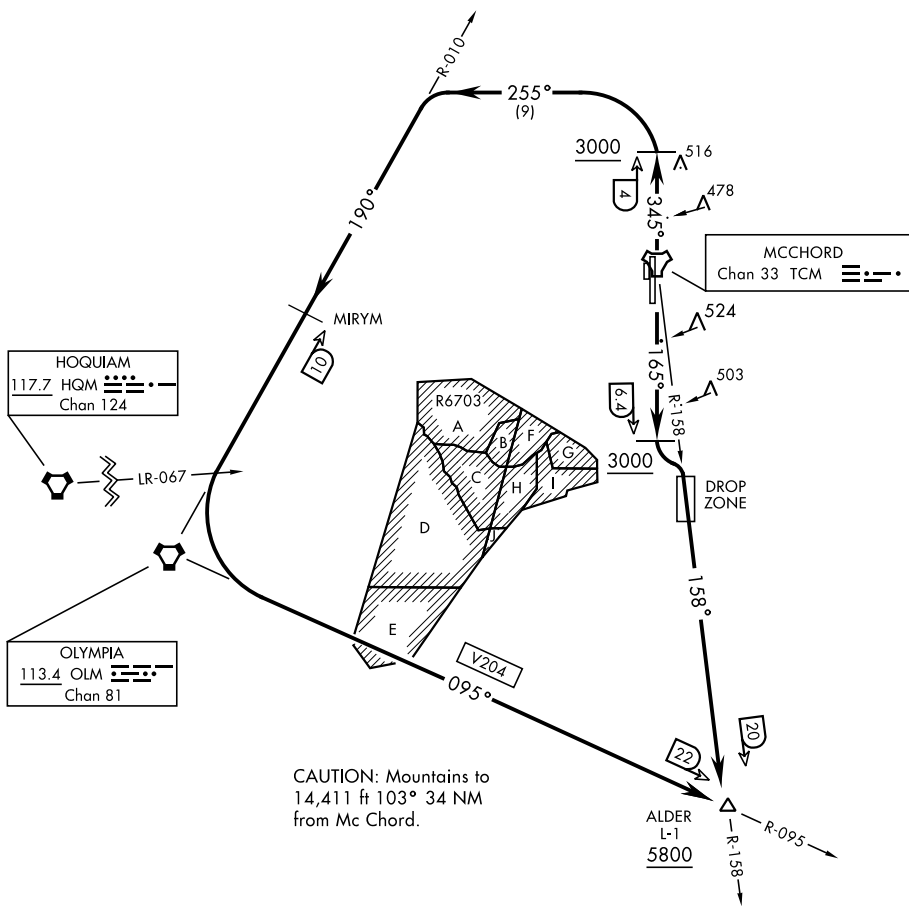
# ALDER-TWO DEPARTURE (ALDER2 • ALDER)

MCCHORD FLD (KTCM)  
TACOMA, WASHINGTON

AL-414 [USAF]

ATIS  
135.825 270.1  
GND CON  
118.175 279.65  
TOWER  
124.8 259.3  
SEATTLE DEP CON  
126.5 377.15

If unable to make ATC charted crossing restrictions advise ATC prior to departure.



NW-1, 31 OCT 2024 to 28 NOV 2024

NW-1, 31 OCT 2024 to 28 NOV 2024

## DEPARTURE ROUTE DESCRIPTION

TAKEOFF RWY 16: Climb on track 165° to cross TCM TACAN 6.4 DME, at or above 3000. Then turn left to intercept TCM R-158 to cross ALDER at or above 5800.

TAKEOFF RWY 34: Climb on track 345° to cross TCM TACAN 4 DME at or above 3000. Then turn left heading 255° to intercept OLM VORTAC R-010 MIRYM then OLM. Then via V204 to cross ALDER at or above 5800.

# ALDER-TWO DEPARTURE (ALDER2 • ALDER)

TACOMA, WASHINGTON  
MCCHORD FLD (KTCM)