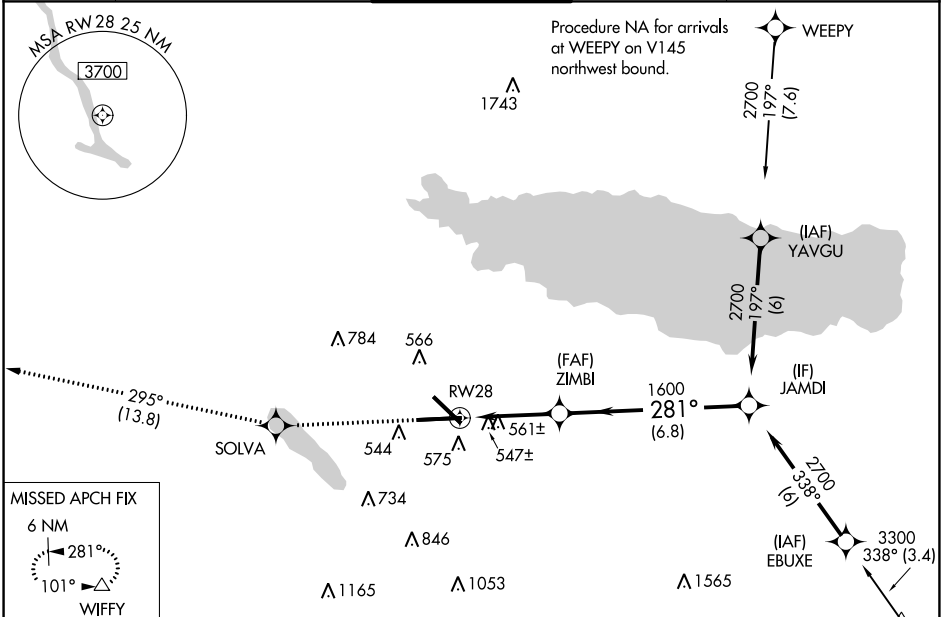


WAAS CH <b>45517</b> <b>W28A</b>	APP CRS <b>281°</b>	Rwy Idg TDZE Apt Elev	<b>9014</b> <b>413</b> <b>421</b>
--	------------------------	-----------------------------	---

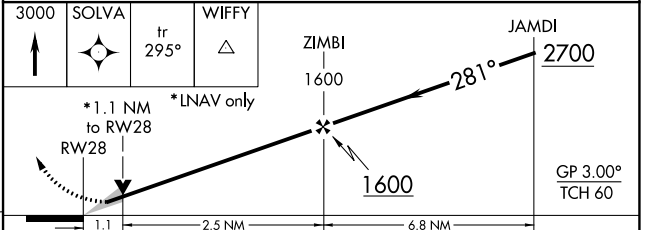
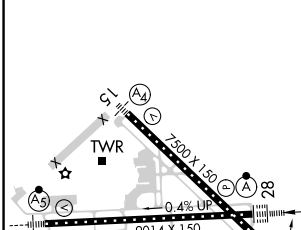
# RNAV (GPS) Z RWY 28

SYRACUSE HANCOCK INTL (SYR)

<p><b>▽</b> For uncompensated Baro-VNAV systems, LNAV/VNAV NA below -21°C (-6°F) or above 54°C (130°F). DME/DME RNP-0.3 NA. For inop ALSF-2, increase LNAV Cats C/D visibility to 1½ mile.</p>		<p>ALSF-2</p>	<p>MISSED APPROACH: Climb to 3000 direct SOLVA and on track 295° to WIFFY and hold.</p>	
ATIS <b>124.225</b>	SYRACUSE APP CON <b>126.125 269.125</b>	SYRACUSE TOWER <b>120.3 239.0</b>	GND CON <b>121.7 348.6</b>	CLNC DEL <b>125.05 257.775</b>



ELEV <b>421</b>	<b>D</b>	TDZE <b>413</b>
-----------------	----------	-----------------



CATEGORY	A	B	C	D
LPV DA		613/18	200 (200-½)	
LNAV/VNAV DA		850/50	437 (500-1)	
LNAV MDA	820/24	407 (400-½)	820/40	407 (400-¾)
CIRCLING	900-1 479 (500-1)	920-1 499 (500-1)	1020-1½ 599 (600-1½)	1180-2½ 759 (800-2½)

NE-2, 03 OCT 2024 to 31 OCT 2024

NE-2, 03 OCT 2024 to 31 OCT 2024