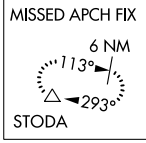
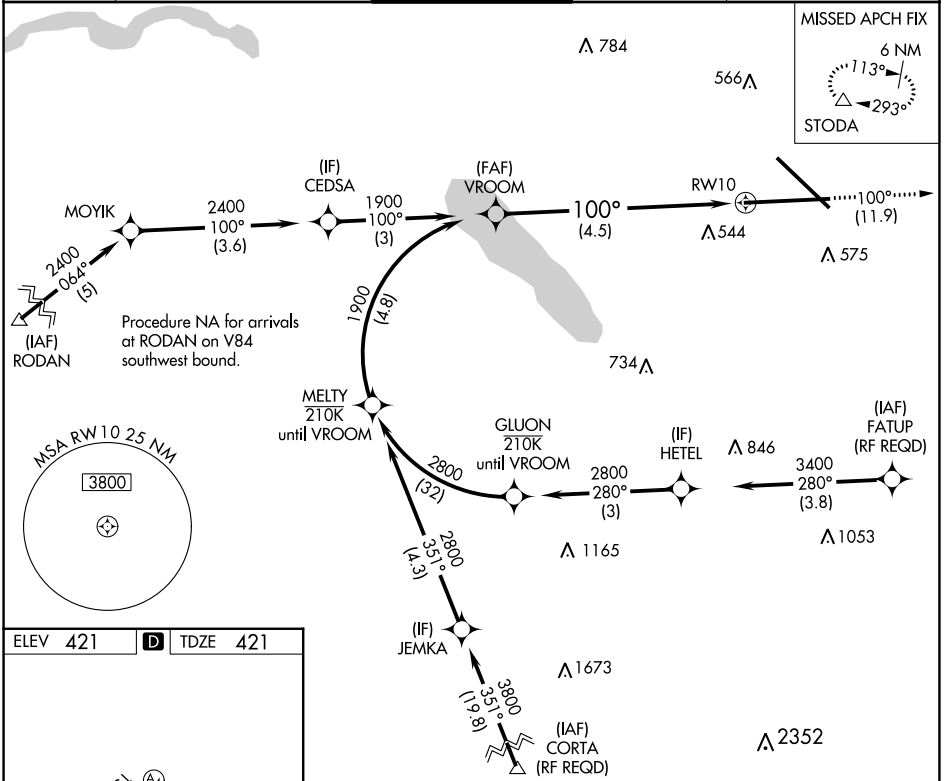


APP CRS	Rwy Idg	<b>9014</b>
<b>100°</b>	TDZE	<b>421</b>
	Apt Elev	<b>421</b>

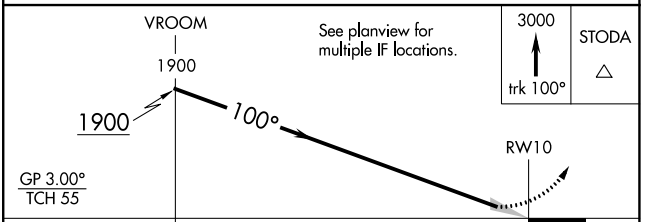
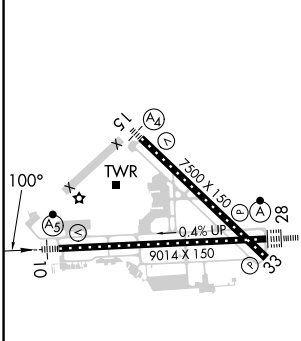
# RNAV (RNP) Y RWY 10

SYRACUSE HANCOCK INTL (SYR)

RNP AR APCH.		MALS	MISSED APPROACH:
<p>▼ For uncompensated Baro-VNAV systems, procedure NA below -18°C or above 54°C. For inop ALS, increase RNP 0.15 all Cats visibility to 1½. For inop ALS, increase RNP 0.30 all Cats visibility to 1¾.</p>			<p>Climb to 3000 on track 100° to STODA and hold.</p>
ATIS	SYRACUSE APP CON	SYRACUSE TOWER	GND CON
<b>124,225</b>	<b>126.125 269.125</b>	<b>120.3 239.0</b>	<b>121.7 348.6</b>
		CLNC DEL <b>125.05 257.775</b>	



ELEV 421	<b>D</b>	TDZE 421
----------	----------	----------



CATEGORY	A	B	C	D
RNP 0.15 DA		816/45	395 (400-¾)	
RNP 0.30 DA		881/55	460 (500-1)	

TDZ/CL Rwy 28  
HIRL Rwy 10-28 and 15-33

**AUTHORIZATION REQUIRED**

NE-2, 03 OCT 2024 to 31 OCT 2024

NE-2, 03 OCT 2024 to 31 OCT 2024