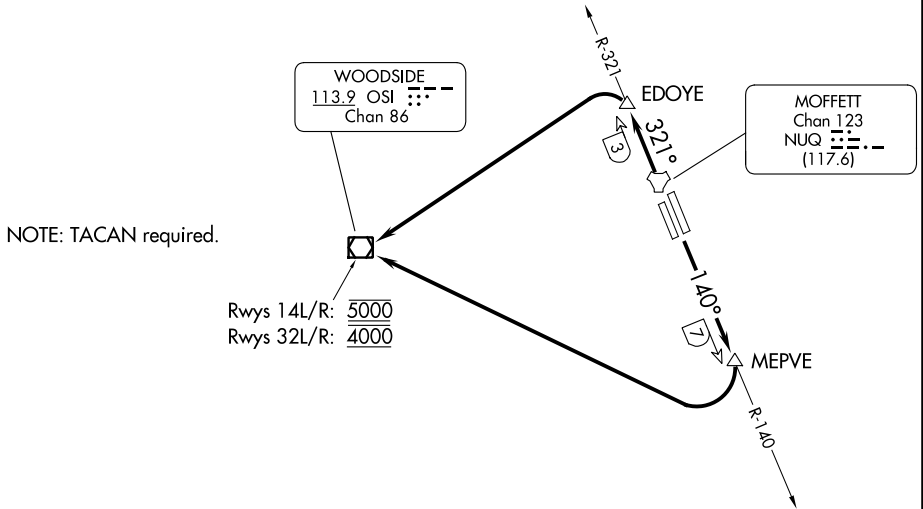


ATIS
 124.175 283.0
 CLNC DEL
 296.75
 GND CON
 121.85 278.95
 MOFFETT TOWER★
 119.55 (CTAF) 259.65
 NORCAL DEP CON
 121.3 270.35

**TOP ALTITUDE:
ASSIGNED BY ATC**



SW-2, 08 AUG 2024 to 05 SEP 2024

SW-2, 08 AUG 2024 to 05 SEP 2024

TAKEOFF MINIMUMS

Rwys 14L/R: Standard with minimum climb of 402' per NM to 5000.
 Rwy 32R: Standard with minimum climb of 250' per NM to 4000.
 Rwy 32L: Standard with minimum climb of 246' per NM to 4000.

NOTE: Chart not to scale.



DEPARTURE ROUTE DESCRIPTION

TAKEOFF RUNWAYS 14L/R: Climb via NUQ R-140 to MEPVE/NUQ 7 DME, then right turn direct to cross OSI VOR/DME at 5000, thence

TAKEOFF RUNWAYS 32L/R: Climb via NUQ R-321 to EDOYE/NUQ 3 DME, then turn left direct to cross OSI VOR/DME at 4000, thence

. . . . via RADAR vectors or assigned route.