

TACAN NUQ Chan 123 (117.6)	APP CRS 321°	Rwy Idg TDZE Apt Elev	7521 36 37
--	------------------------	-----------------------------	---------------------------------------

TACAN RWY 32L

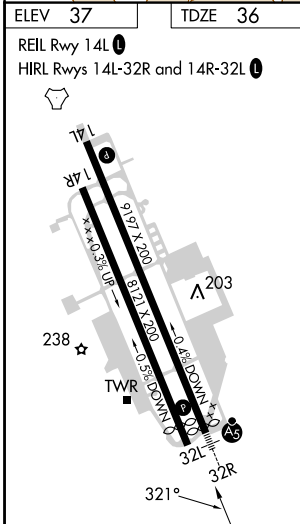
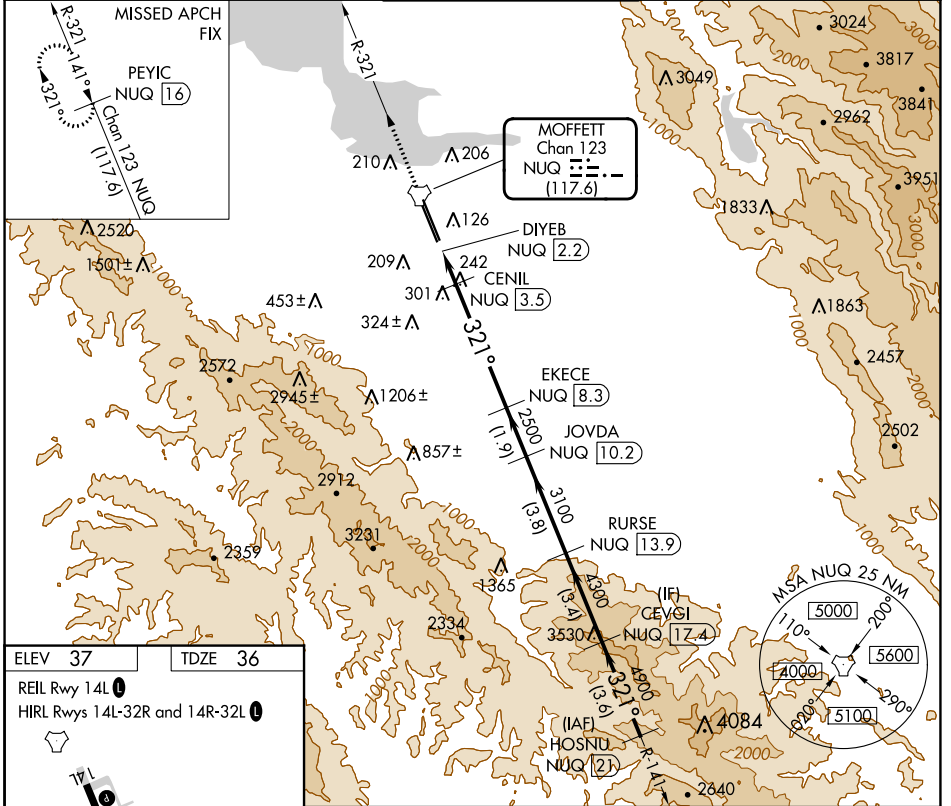
MOFFETT FEDERAL AIRFIELD (NUQ)

RADAR required for procedure entry.

▼ Rwy 32L helicopter visibility reduction below ¾ SM NA.

MISSED APPROACH: Climb to 3200 on NUQ TACAN R-321 to PEYIC/16 DME and hold.

ATIS 124.175 283.0	NORCAL APP CON 120.1 290.25	MOFFETT TOWER ★ 119.55 (CTAF) 259.65	GND CON 121.85 278.95	CLNC DEL 296.75
------------------------------	---------------------------------------	--	---------------------------------	---------------------------



3200	PEYIC NUQ R-321 16	CENIL NUQ 3.5	EKECE NUQ 8.3	JOVDA NUQ 10.2	RURSE NUQ 13.9	CEVGI NUQ 17.4	HOSNU NUQ 21	
	DIYEB NUQ 2.2							
			3.45° TCH 55					
			720	2500	3100	4300	4900	
	0.5	0.8	0.5	4.8 NM	1.9 NM	3.8 NM	3.4 NM	
CATEGORY	A		B		C		D	
S-32L	560-1 524 (600-1)		560-1½ 524 (600-1½)		560-1½ 524 (600-1½)		560-1½ 524 (600-1½)	
CIRCLING	560-1 523 (600-1)	600-1 563 (600-1)	620-1½ 583 (600-1½)	780-2½ 743 (800-2½)	940-3 903 (1000-3)			

SW-2, 08 AUG 2024 to 05 SEP 2024

SW-2, 08 AUG 2024 to 05 SEP 2024