

APP CRS	Rwy Idg	N/A
108°	TDZE	N/A
	Apt Elev	1375

# RNAV (GPS)-A

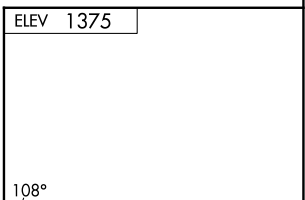
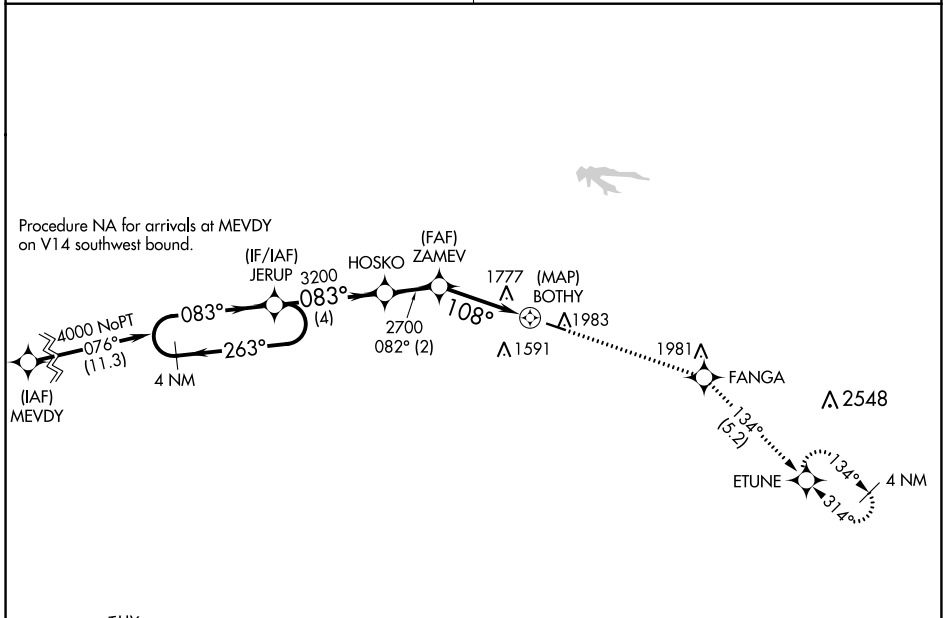
## DOWNTOWN (3DW)

**NA** Circling NA north of Rwy 11-29. DME/DME RNP-0.3 NA.  
 Use Springfield-Branson Ntl altimeter setting; when not received, use Branson West altimeter setting and increase all MDA 60 feet.  
 Procedure NA at night. Helicopter visibility reduction below 1 SM NA.

**MISSED APPROACH:** Climb to 4000 direct FANGA and track 134° to ETUNE and hold.

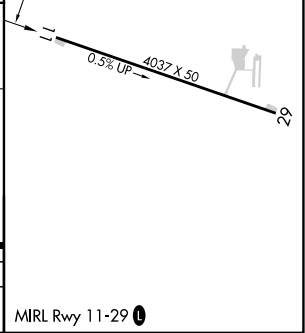
SPRINGFIELD APP CON  
**124.95 353.925**

UNICOM  
**122.8 (CTAF) 0**



4000	JERUP	HOSKO	ZAMEV	BOTHY
4 NM	2 NM	3.5 NM	0.7 NM	

CATEGORY	A	B	C	D
CIRCLING	2060-1	685 (700-1)	NA	



NC-3, 31 OCT 2024 to 28 NOV 2024

NC-3, 31 OCT 2024 to 28 NOV 2024