

WAAS CH <b>93501</b> W26A	APP CRS <b>257°</b>	Rwy Idg TDZE Apt Elev	<b>8199</b> <b>2372</b> <b>2385</b>
---------------------------------	------------------------	-----------------------------	---

# RNAV (GPS) Y RWY 26

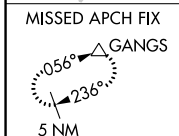
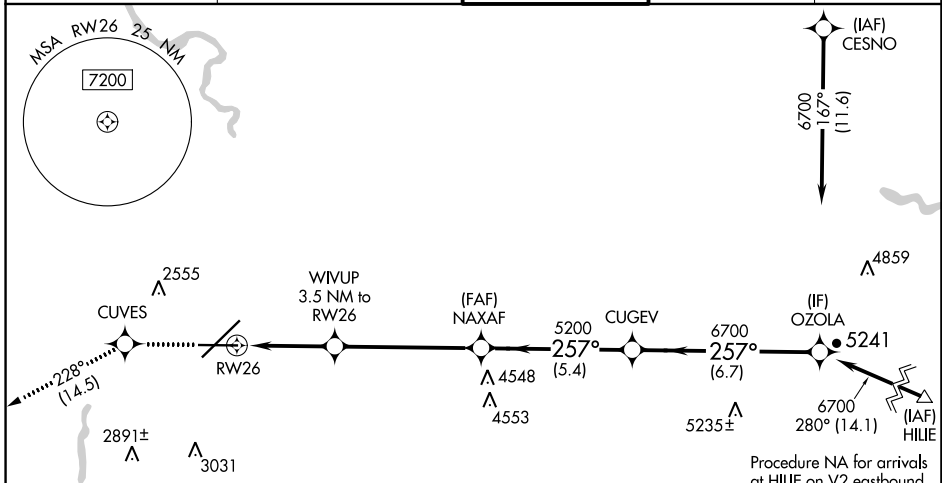
SPOKANE INTL (GEG)

RNP APCH.

**⚠** Rwy 26 helicopter visibility reduction below 3/4 SM NA.  
**⚠** For uncompensated Baro-VNAV systems, LNAV/VNAV NA below -18°C or above 54°C.

MISSED APPROACH: Climb to 5000 direct CUVES and on track 228° to GANGS and hold.

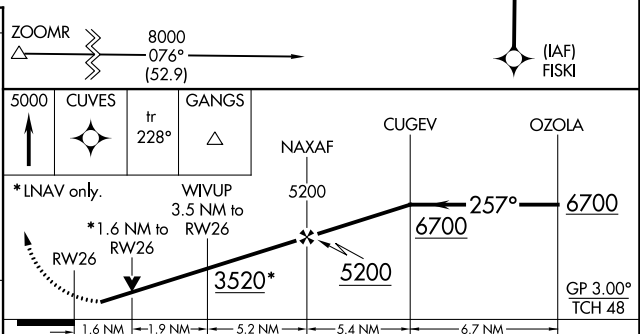
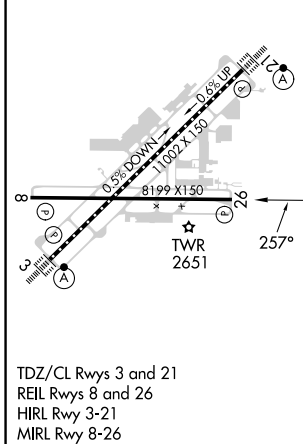
ATIS <b>124.325 254.375</b>	SPOKANE APP CON <b>123.75 282.25 (205°-025°)</b> <b>133.35 263.0 (026°-204°)</b>	SPOKANE TOWER <b>118.3 278.3</b>	GND CON <b>121.9 348.6</b>	CLNC DEL <b>127.55</b>
--------------------------------	--	-------------------------------------	-------------------------------	---------------------------



Procedure NA for arrivals at ZOOMR on V2-448 southwest bound.

Procedure NA for arrivals at HILIE on V2 eastbound.

ELEV 2385	<b>D</b>	TDZE 2372
-----------	----------	-----------



CATEGORY	A	B	C	D
LPV DA		2688-1	316 (400-1)	
LNAV/VNAV DA		2911-1½	539 (600-1½)	
LNAV MDA	2920-1	548 (600-1)	2920-1½	548 (600-1½)
<b>C</b> CIRCLING	2960-1 575 (600-1)	2980-1 595 (600-1)	3300-2¾ 915 (1000-2¾)	3400-3 1015 (1100-3)

NW-1, 31 OCT 2024 to 28 NOV 2024

NW-1, 31 OCT 2024 to 28 NOV 2024