

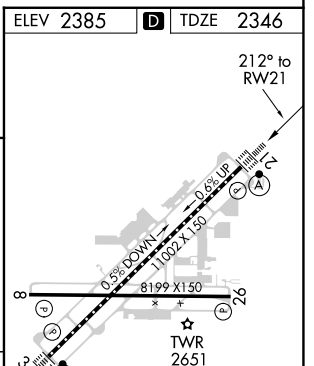
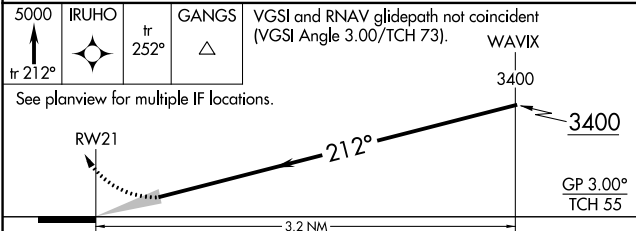
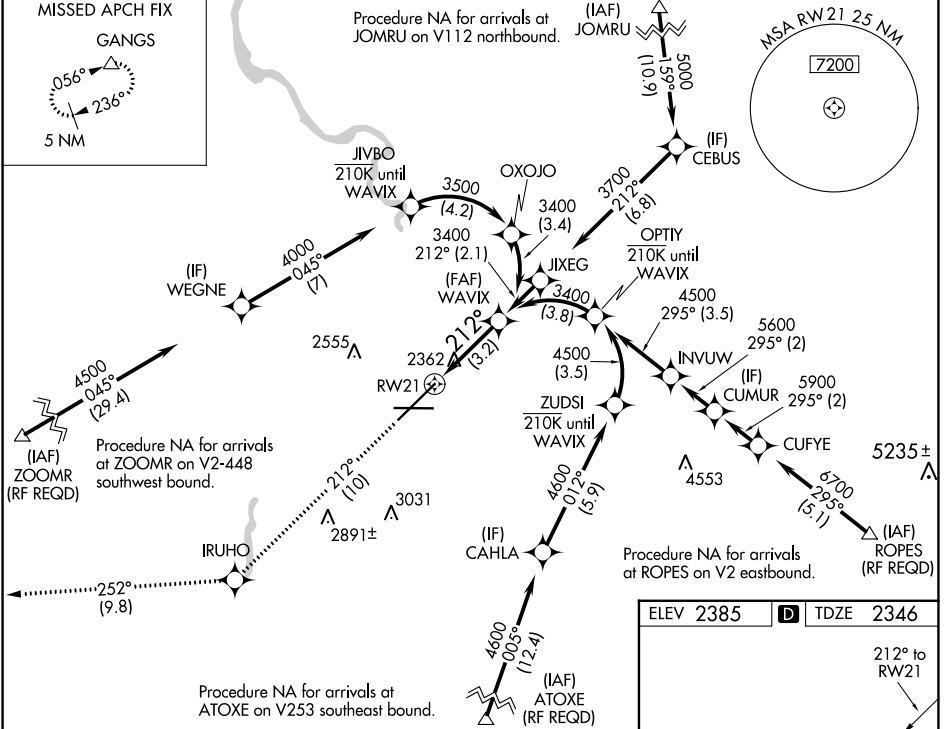
APP CRS	Rwy Idg	<b>11002</b>
<b>212°</b>	TDZE	<b>2346</b>
	Apt Elev	<b>2385</b>

# RNAV (RNP) Z RWY 21

SPOKANE INTL (GEG)

RNP AR APCH.	ALSIF-2	MISSED APPROACH: Climb to 5000 on track 212° to IRUHO and on track 252° to GANGS and hold.
▼ For uncompensated Baro-VNAV systems, procedure NA below -19°C or above 43°C. For inop ALS increase RNP 0.11 visibility all Cats to ¾, RNP 0.15 visibility all Cats to 1½ and RNP 0.30 visibility all Cats to 1¾.		*Missed approach requires minimum climb of 310 feet per NM to 3000.

ATIS	SPOKANE APP CON	SPOKANE TOWER	GND CON	CLNC DEL
<b>124.325 254.375</b>	<b>123.75 282.25</b> (205°-025°)	<b>118.3 278.3</b>	<b>121.9 348.6</b>	<b>127.55</b>



CATEGORY	A	B	C	D
RNP 0.11 DA*		2596/24	250 (300-½)	
RNP 0.15 DA		2699/30	353 (400-¾)	
RNP 0.30 DA		2752/45	406 (400-¾)	

TDZ/CL Rws 3 and 21  
 REIL Rws 8 and 26  
 HIRL Rwy 3-21  
 MIRL Rwy 8-26

## AUTHORIZATION REQUIRED

NW-1, 11 JUL 2024 to 08 AUG 2024

NW-1, 11 JUL 2024 to 08 AUG 2024