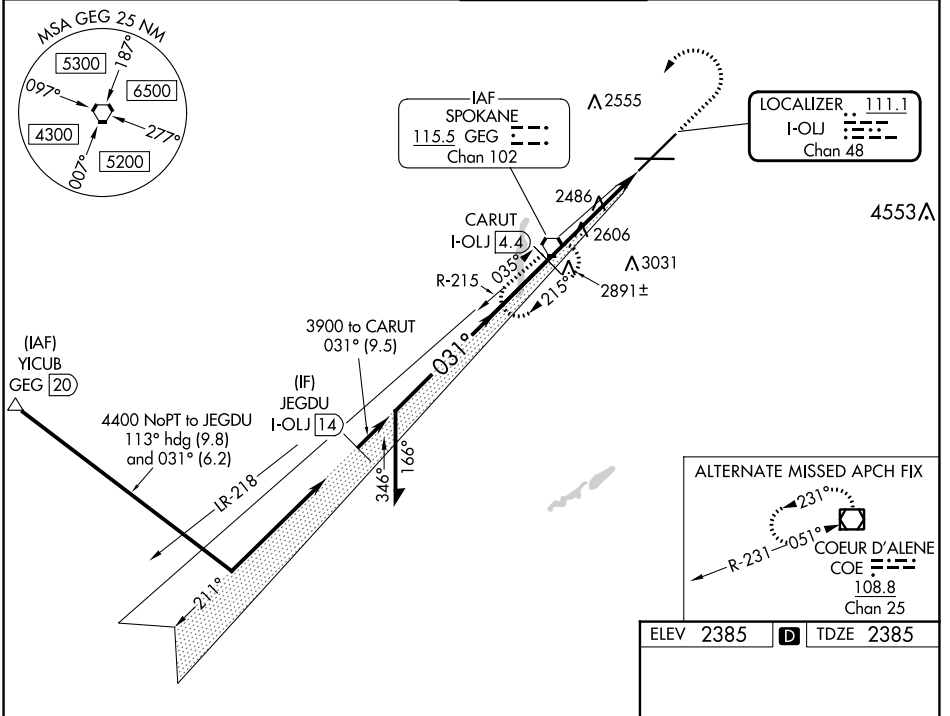


LOC/DME I-OLJ <b>111.1</b> Chan 48	APP CRS <b>031°</b>	Rwy Idg TDZE Apt Elev	<b>11002</b> <b>2385</b> <b>2385</b>
--	------------------------	-----------------------------	--

# ILS RWY 3 (SA CAT I)

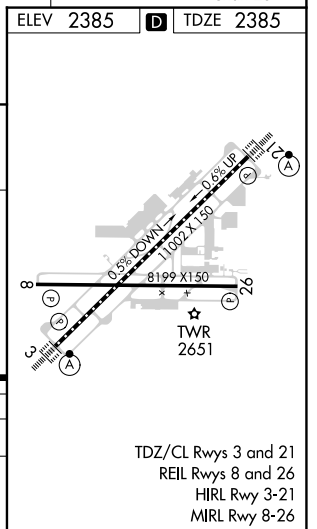
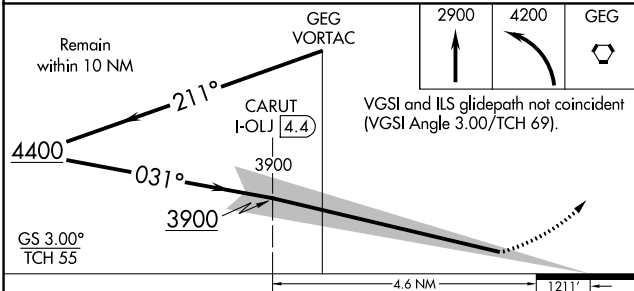
SPOKANE INTL (GEG)

<p>Requires specific OPSPEC, MSPEC, or LOA approval.</p>	<p>ALSF-2</p>	<p>MISSED APPROACH: Climb to 2900 then climbing left turn to 4200 direct GEG VORTAC and hold, continue climb-in-hold to 4200.</p>		
	<p>ATIS <b>124.325 254.375</b></p>	<p>SPOKANE APP CON <b>123.75 282.25</b> (205°-025°) <b>133.35 263.0</b> (026°-204°)</p>	<p>SPOKANE TOWER <b>118.3 278.3</b></p>	<p>GND CON <b>121.9 348.6</b></p>



NW-1, 31 OCT 2024 to 28 NOV 2024

NW-1, 31 OCT 2024 to 28 NOV 2024



CATEGORY	A	B	C	D
S-ILS 3	RA 154/14 150 DA 2535			
<b>SA CATEGORY I ILS - SPECIAL AIRCREW &amp; AIRCRAFT CERTIFICATION REQUIRED</b>				