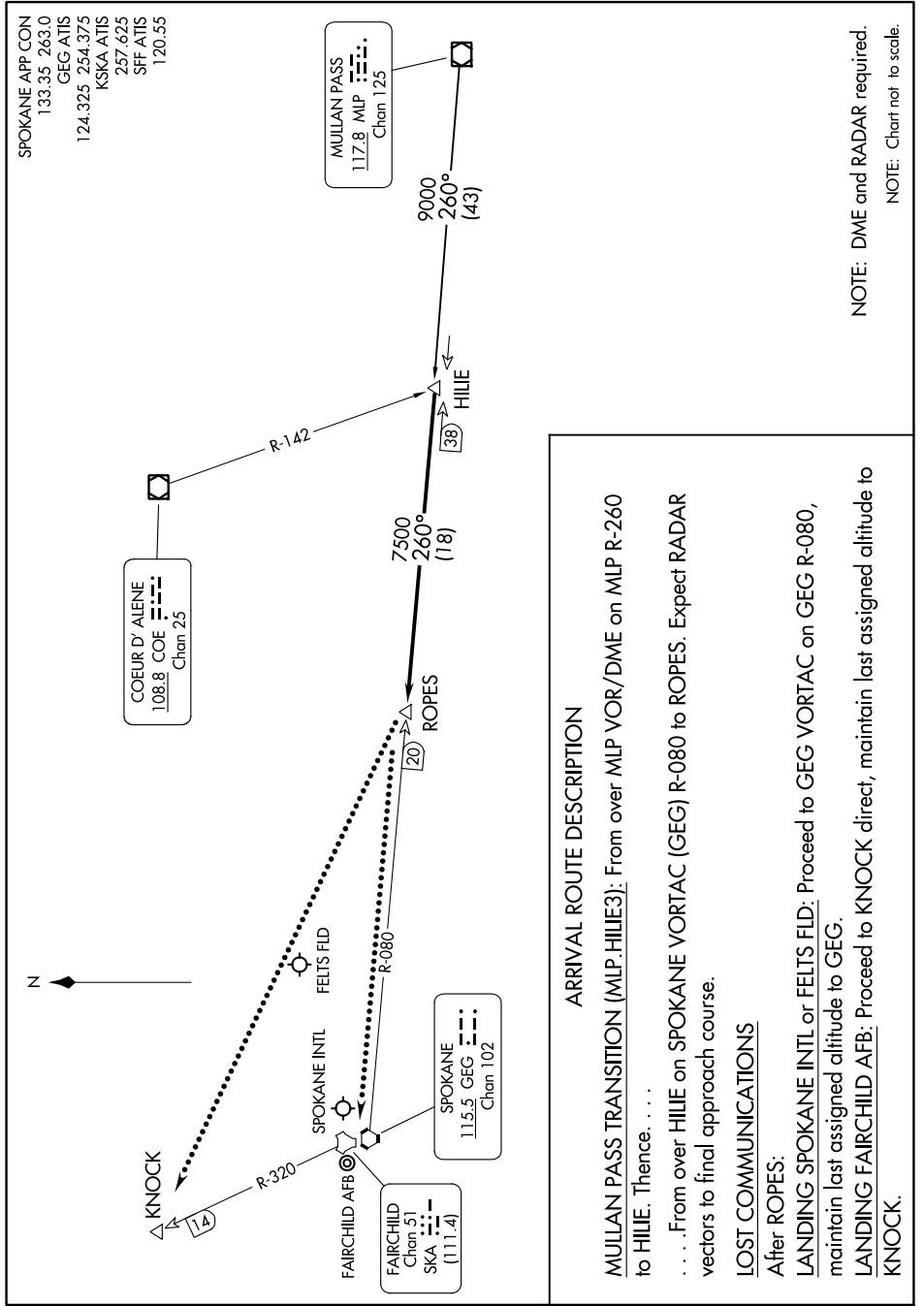


NW-1, 11 JUL 2024 to 08 AUG 2024



ARRIVAL ROUTE DESCRIPTION

MULLAN PASS TRANSITION (MLP.HILIE3): From over MLP VOR/DME on MLP R-260 to HILIE. Thence

. From over HILIE on SPOKANE VORTAC (GEG) R-080 to ROPES. Expect RADAR vectors to final approach course.

LOST COMMUNICATIONS

After ROPES:

LANDING SPOKANE INTL or FELT'S FLD: Proceed to GEG VORTAC on GEG R-080, maintain last assigned altitude to GEG.

LANDING FAIRCHILD AFB: Proceed to KNOCK direct, maintain last assigned altitude to KNOCK.

NOTE: DME and RADAR required.
NOTE: Chart not to scale.

NW-1, 11 JUL 2024 to 08 AUG 2024