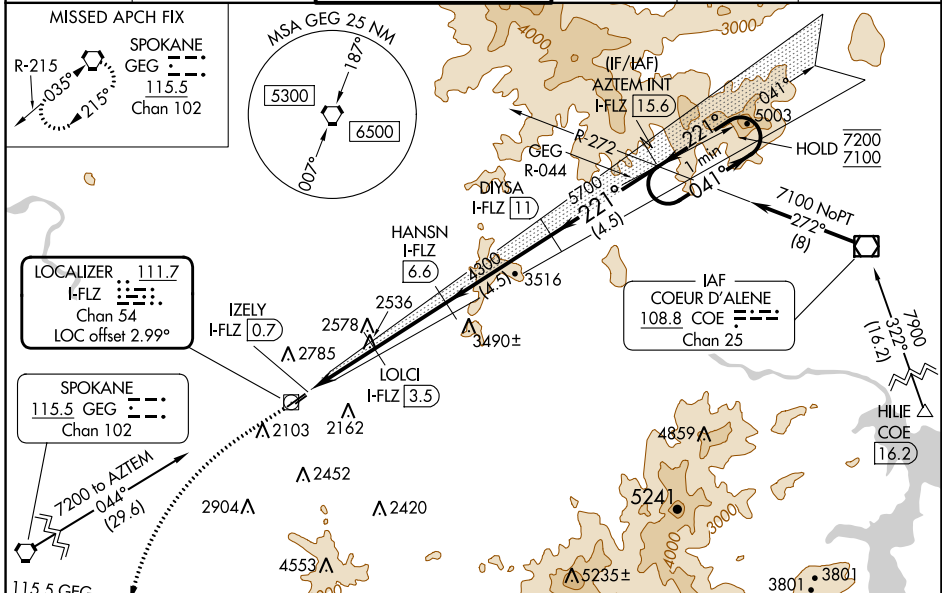


LOC/DME I-FLZ <b>111.7</b> Chan <b>54</b>	APP CRS <b>221°</b>	Rwy Idg TDZE Apt Elev	<b>4499</b> <b>1957</b> <b>1957</b>
---	------------------------	-----------------------------	---

# ILS or LOC RWY 22R

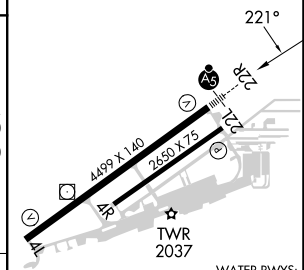
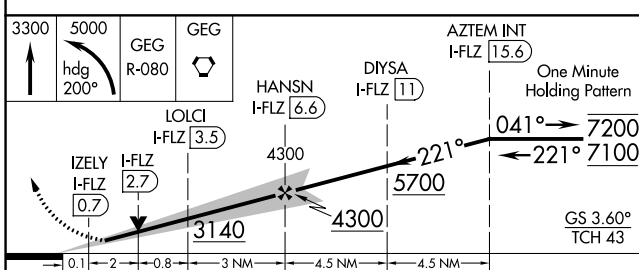
FELTS FLD (S/F)

DME required.		MALSR		MISSED APPROACH: Climb to 3300 then climbing left turn to 5000 on heading 200° and GEG VORTAC R-080 to GEG VORTAC and hold.	
<p>▼ Circling NA northwest of Rwy 4L-22R. Circling Rwy 22L NA at night.</p> <p>⚠ Rwy 22R helicopter visibility reduction below ¾ SM NA. For inop ALS, increase S-ILS Cat A/B/C visibility to ¾ SM, increase S-LOC Cat A visibility to 1 SM and Cat C visibility to 2½ SM.</p> <p>❄ -16°C</p>					
ATIS <b>120.55</b>	SPOKANE APP CON <b>133.35 263.0</b>	<b>FELTS TOWER ★</b> <b>132.5 (CTAF) 239.025</b>	GND CON <b>121.7</b>	CLNC DEL <b>121.7</b>	UNICOM <b>122.95</b>



LOCALIZER <b>111.7</b> I-FLZ [54] Chan 54 LOC offset 2.99°	SPOKANE 115.5 GEG Chan 102
---	----------------------------------

ELEV 1957	TDZE 1957
-----------	-----------



CATEGORY	A	B	C	D
S-ILS 22R	2257-½ 300 (300-½)			NA
S-LOC 22R	2800-¾	843 (900-¾)	2800-1⅞ 843 (900-1⅞)	NA
CIRCLING	2800-1¼ 843 (900-1¼)	2800-1½ 843 (900-1½)	3100-3 1143 (1200-3)	NA

REIL Rwy 4L	MIRL Rwy 4L-22R
-------------	-----------------

NW-1, 31 OCT 2024 to 28 NOV 2024

NW-1, 31 OCT 2024 to 28 NOV 2024