

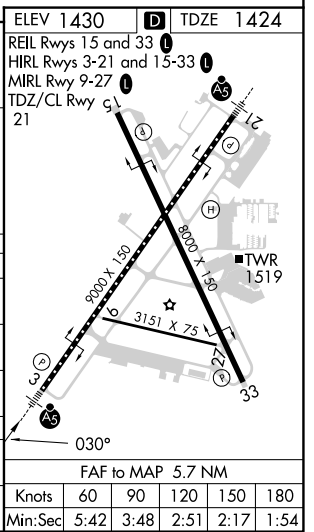
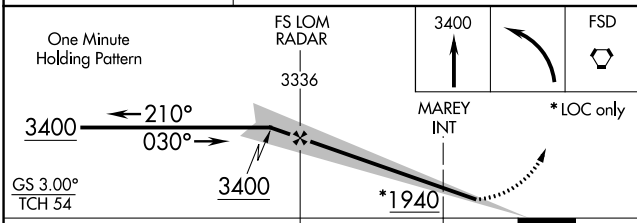
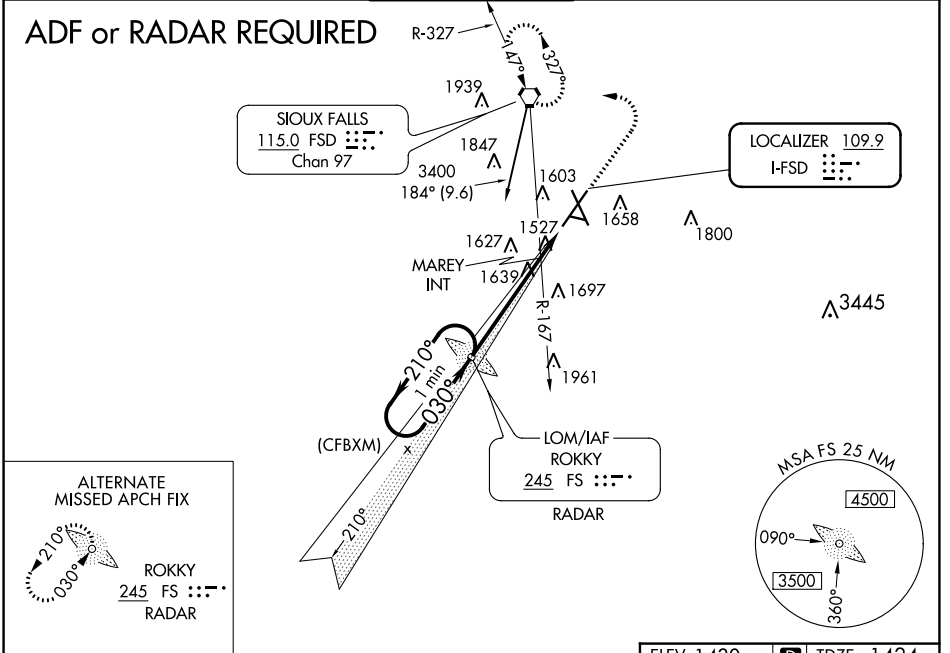
LOC I-FSD <b>109.9</b>	APP CRS <b>030°</b>	Rwy Idg TDZE Apt Elev	<b>8999</b> <b>1424</b> <b>1430</b>
---------------------------	------------------------	-----------------------------	---

# ILS or LOC RWY 3

JOE FOSS FLD (FSD)

		MISSED APPROACH: Climb to 3400 then left turn direct FSD VORTAC and hold.
--	--	---

ATIS <b>126.6</b>	SIoux FALLS APP CON * <b>125.8 306.2</b>	SIoux FALLS TOWER * <b>118.3 (CTAF) 0 257.8</b>	GND CON <b>121.9 348.6</b>	UNICOM <b>122.95</b>
----------------------	---	--	-------------------------------	-------------------------



CATEGORY	A	B	C	D
S-ILS 3	1674/24 250 (300-½)			
S-LOC 3	1940/24	516 (600-½)	1940/55	516 (600-1)
CIRCLING	1960-1 530 (600-1)	1980-1 550 (600-1)	2060-1¾ 630 (700-1¾)	2200-2½ 770 (800-2½)
MAREY FIX MINIMUMS (DUAL VOR RECEIVERS REQUIRED)				
S-LOC 3	1800/24	376 (400-½)	1800/35	376 (400-5/8)
CIRCLING	1960-1 530 (600-1)	1980-1 550 (600-1)	2060-1¾ 630 (700-1¾)	2200-2½ 770 (800-2½)

NC-1, 05 SEP 2024 to 03 OCT 2024

NC-1, 05 SEP 2024 to 03 OCT 2024