

SIOUX FALLS, SOUTH DAKOTA

HI-ILS or LOC RWY 21

LOC I-JOU 111.1	APCH CRS 210°	Rwy ldg 8999 TDZE 1430 Arprt Elev 1430
---------------------------	-------------------------	---

AL-396 [USAF]

JOE FOSS FLD (KFSD)

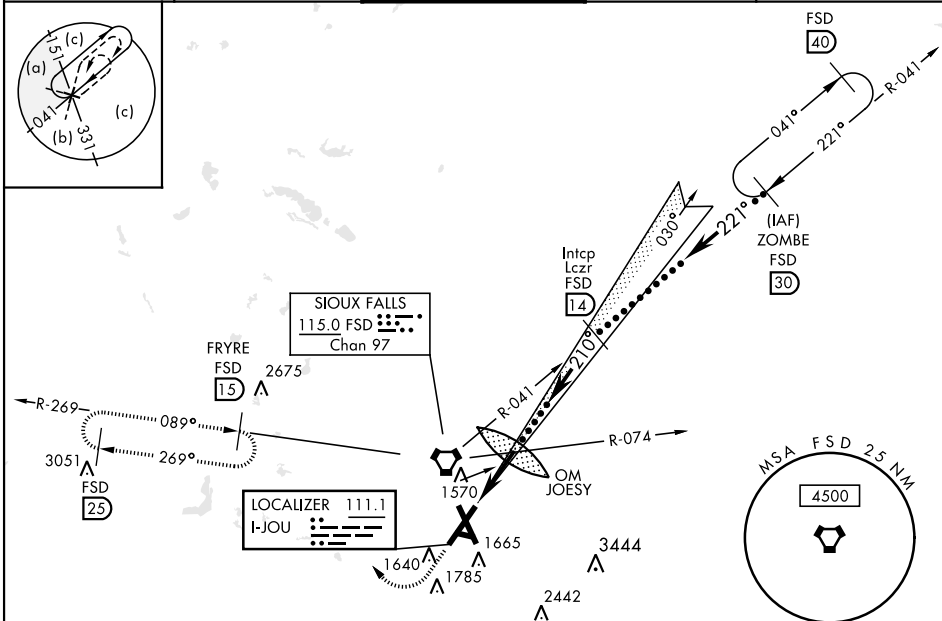
DME required. RADAR required for procedure entry.



MISSED APPROACH: Climb to 3400 then climbing right turn to 5000 on heading 300° and FSD R-269 to FRYRE 15 DME and hold.

When ALS inop, increase RVR to 40 and vis to 3/4 miles.
When ALS inop, increase CAT CDE vis to 1 1/8 miles.

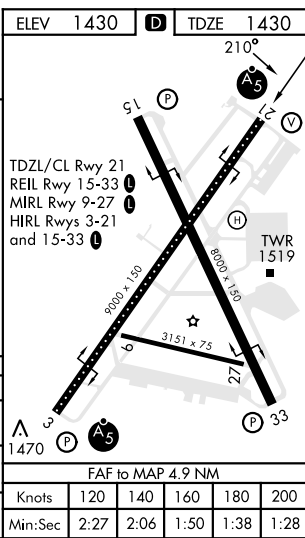
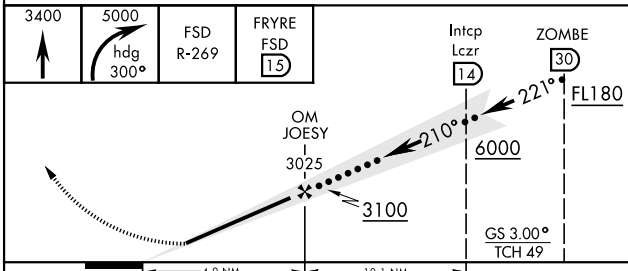
ATIS 126.6	SIOUX FALLS APP CON 125.8 306.2	SIOUX FALLS TOWER ★ 118.3(CTAF) 257.8	GND CON 121.9 348.6	ASR
----------------------	---	---	-------------------------------	-----



NC-1, 11 JUL 2024 to 08 AUG 2024

NC-1, 11 JUL 2024 to 08 AUG 2024

EMERG SAFE ALT 100 NM 4600



CATEGORY	C		D		E
S-ILS 21*	1630/18		200	(200-1/2)	
S-LOC 21**	1920/50	490	(500-1)		1920/60 490 (500-1 1/2)
CIRCLING	2060-1 3/4 630 (700-1 3/4)	2200-2 1/2 770 (800-2 1/2)	2300-3 870 (900-3)		

SIOUX FALLS, SOUTH DAKOTA

43° 35' N-96° 45' W

JOE FOSS FLD (KFSD)

Amdt 6C 04NOV21

HI-ILS or LOC RWY 21