

SIoux CITY, IOWA

AL-395 (FAA)

22223

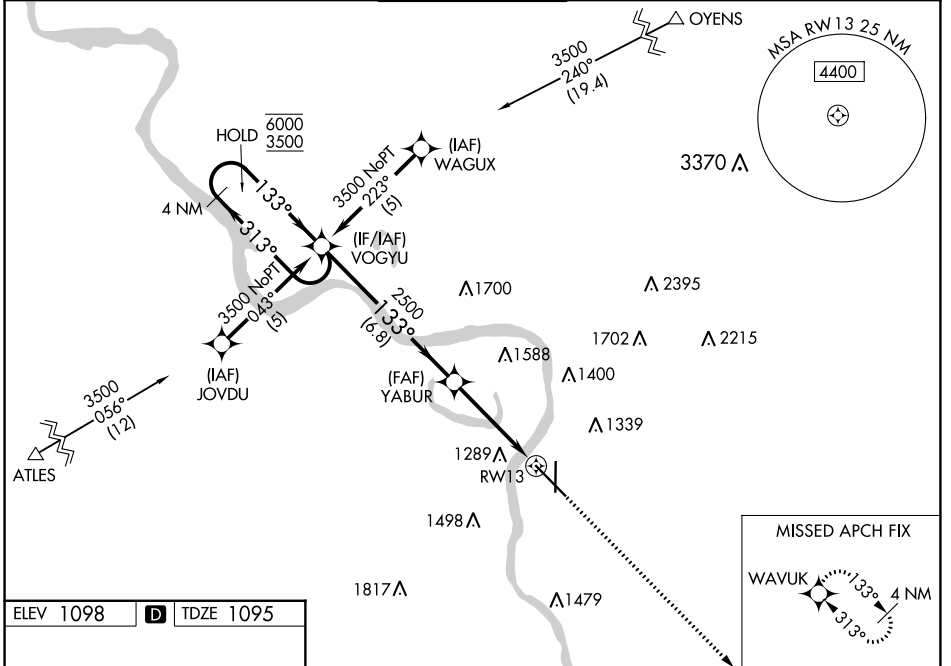
WAAS CH <b>57911</b> <b>W13A</b>	APP CRS <b>133°</b>	Rwy Idg TDZE Apt Elev	<b>9002</b> <b>1095</b> <b>1098</b>
--	------------------------	-----------------------------	---

# RNAV (GPS) RWY 13

SIoux GATEWAY/BRIG GENERAL BUD DAY FLD (SUx)

RNP APCH-GPS.		MALS	MISSED APPROACH: Climb to 3900 direct WAVUK and hold.
<p>⚠ Inop table does not apply to LPV all Cats. For uncompensated Baro-VNAV systems, LNAV/VNAV NA below -20°C or above 54°C. For inop ALS, increase LNAV/VNAV Cat E visibility to 1½ SM and LNAV Cat E visibility to 1½ SM.</p>			

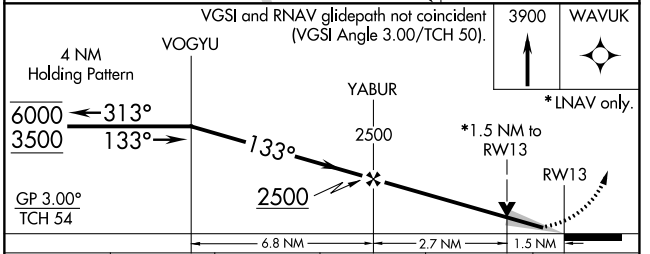
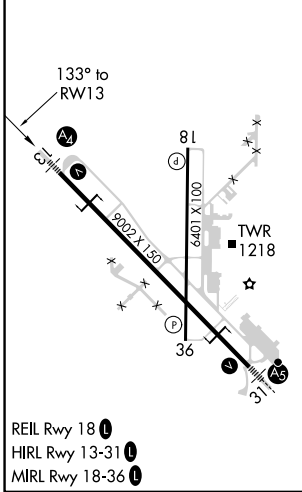
ATIS <b>119.45 270.8</b>	SIoux CITY APP CON * <b>124.6 307.0</b>	SIoux CITY TOWER * <b>118.7 (CTAF) 0 254.3</b>	GND CON <b>121.9 348.6</b>	UNICOM <b>122.95</b>
-----------------------------	--	---	-------------------------------	-------------------------



NC-3, 03 OCT 2024 to 31 OCT 2024

NC-3, 03 OCT 2024 to 31 OCT 2024

ELEV 1098	<b>D</b>	TDZE 1095
-----------	----------	-----------



CATEGORY	A	B	C	D	E
LPV DA	1295/40		200 (200-¾)		
LNAV/VNAV DA	1582/60		487 (500-1¼)		
LNAV MDA	1620/40 525 (600-¾)		1620-1¼ 525 (600-1¼)		
<b>C</b> CIRCLING	1640-1 542 (600-1)	1700-1 602 (700-1)	1700-1¼ 602 (700-1¼)	1860-2½ 762 (800-2½)	2000-3 902 (1000-3)

SIoux CITY, IOWA  
Orig-G 11AUG22

SIoux GATEWAY/BRIG GENERAL BUD DAY FLD (SUx)  
42°24'N-96°23'W

# RNAV (GPS) RWY 13