

# HI-VOR/DME Z RWY 33

VORTAC EMG <b>111.2</b> Chan <b>49</b>	APCH CRS <b>323°</b>	Rwy Idg <b>11,758</b> THRE <b>161</b> Arprt Elev <b>165</b>
--	-------------------------	---

[USAF]

BARKSDALE AFB (KBAD)

DME or RADAR required.

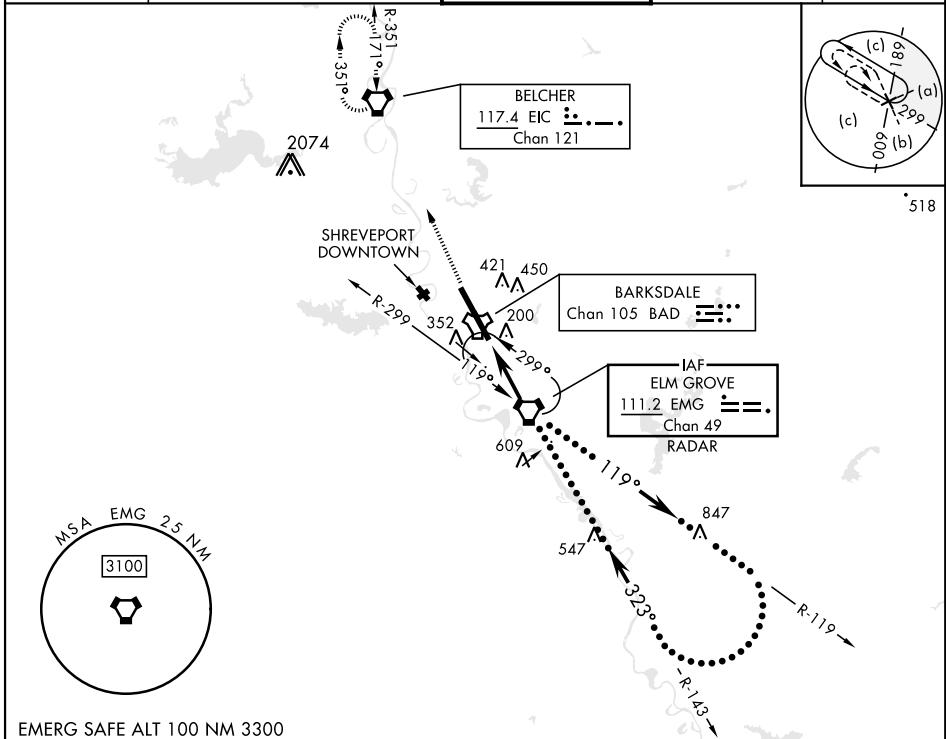
- \* When ALS inop, increase CAT CDE vis to 1 $\frac{3}{8}$  miles.
- \*\* Circling not authorized W of Rwy.

ALSF-1

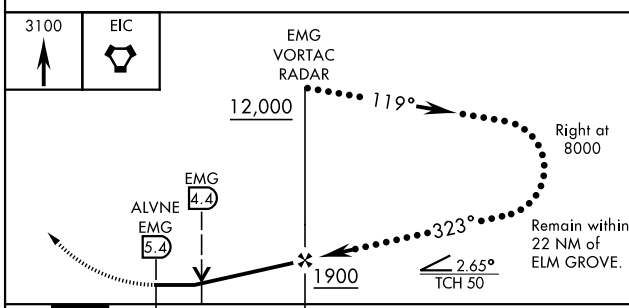


MISSED APPROACH: Climb to 3100 direct to EIC VORTAC and hold.

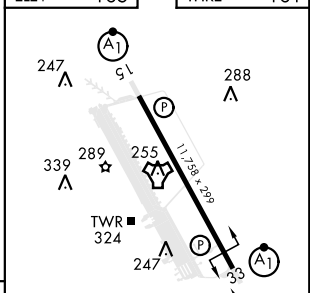
ATIS <b>307.025</b>	SHREVEPORT APP CON 320°-152° <b>123.75 360.725</b> 153°-319° <b>119.9 335.55</b>	TOWER★ <b>128.25 278.3</b>	GND CON <b>121.8 253.5</b>	ASR
------------------------	--	-------------------------------	-------------------------------	-----



EMERG SAFE ALT 100 NM 3300



ELEV	165	THRE	161
------	-----	------	-----



CATEGORY	C	D	E
S-33*	640/50	479 (500-1)	
CIRCLING**	NOT AUTHORIZED	760-2 595 (600-2)	780-2 $\frac{1}{4}$ 615 (700-2 $\frac{1}{4}$ )

HIRL Rwy 15-33	FAF to MAP 5.4 NM				
Knots	120	140	160	180	200
Min:Sec	2:42	2:19	2:01	1:48	1:37

# HI-VOR/DME Z RWY 33

SC-4, 31 OCT 2024 to 28 NOV 2024

SC-4, 31 OCT 2024 to 28 NOV 2024