

WAAS CH <b>66003</b> <b>W13A</b>	APP CRS <b>135°</b>	Rwy Idg <b>5022</b> TDZE <b>3273</b> Apt Elev <b>3275</b>
--	------------------------	---

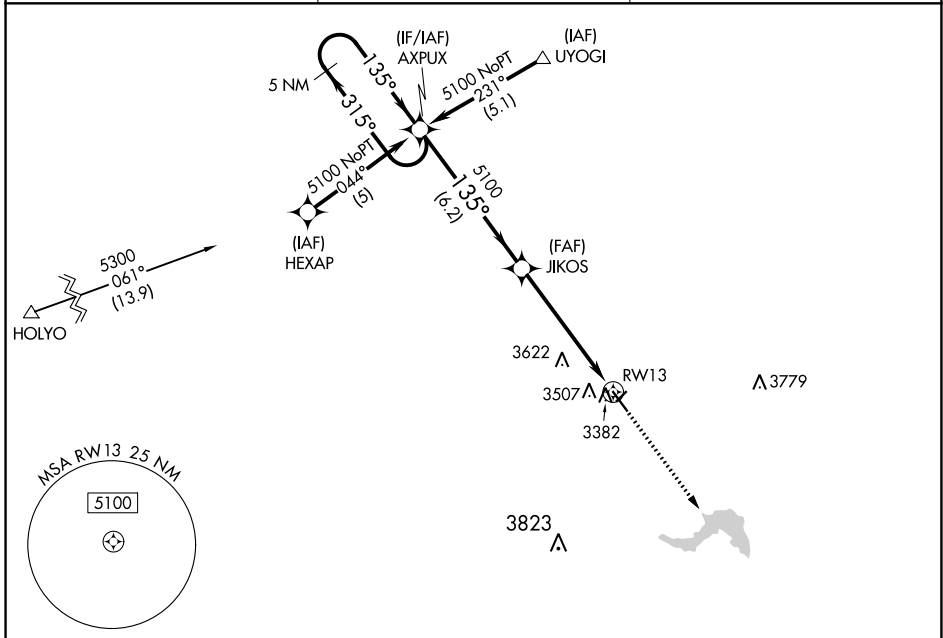
# RNAV (GPS) RWY 13

IMPERIAL MUNI (IML)

**⚠** For uncompensated Baro-VNAV systems, LNAV/VNAV NA below -21°C (-5°F) or above 54°C (130°F). DME/DME RNP-0.3 NA. Helicopter visibility reduction below 3/4 SM NA. If local altimeter setting not received, use Ogallala altimeter setting and increase all DAs 86 feet and all MDAs 100 feet. VDP and Baro-VNAV NA when using Ogallala altimeter setting. Circling NA to Rwy 3 and 21.

**MISSED APPROACH:** Climb to 5000 direct AQIMU and hold.

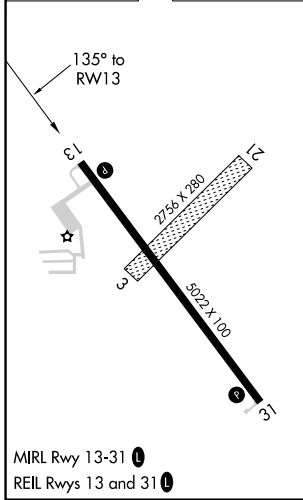
ASOS <b>124.175</b>	DENVER CENTER <b>132.7 397.85</b>	UNICOM <b>122.8 (CTAF) 0</b>
------------------------	--------------------------------------	---------------------------------



NC-2, 31 OCT 2024 to 28 NOV 2024

NC-2, 31 OCT 2024 to 28 NOV 2024

ELEV <b>3275</b>	TDZE <b>3273</b>
------------------	------------------



5 NM Holding Pattern		AXPUX	JIKOS	5000	AQIMU
5100 ← 315°		→ 135°		↑	⬠
GP 3.00° TCH 41		5100		* 1.6 NM to RW13	
		6.2 NM		3.9 NM	
				1.6 NM	
				* LNAV only.	
CATEGORY	A	B	C	D	
LPV DA	3548-1	275 (300-1)			NA
LNAV/VNAV DA	3752-1 3/4	479 (500-1 1/4)			NA
LNAV MDA	3820-1	547 (600-1)			NA
CIRCLING	3860-1	585 (600-1)			NA