

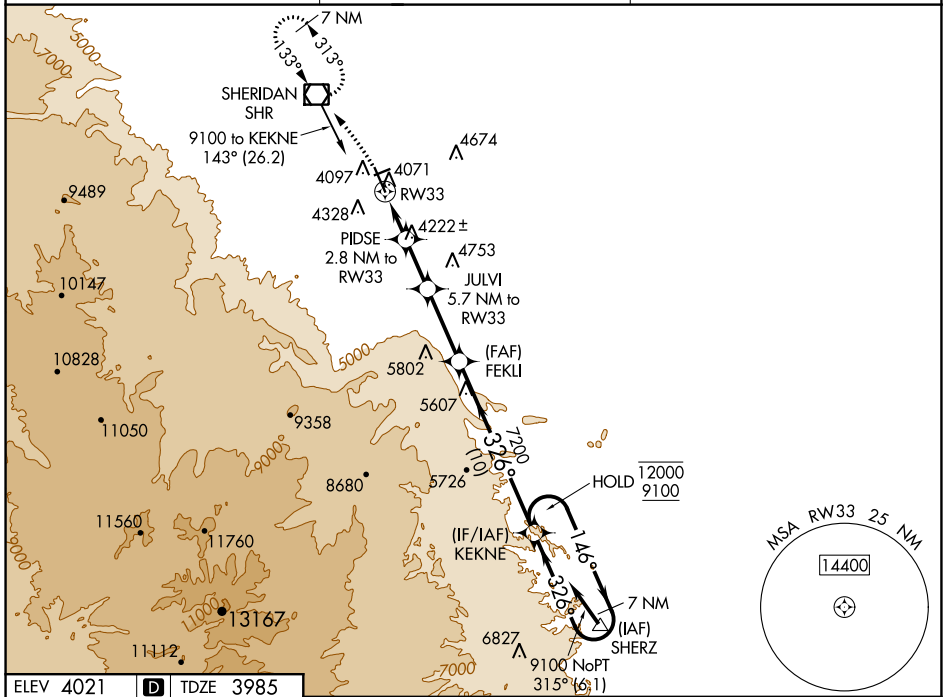
WAAS CH <b>65699</b> <b>W33A</b>	APP CRS <b>326°</b>	Rwy Idg TDZE Apt Elev	<b>8301</b> <b>3985</b> <b>4021</b>
--	------------------------	-----------------------------	---

# RNAV (GPS) RWY 33

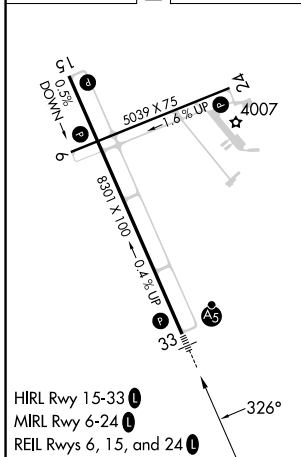
SHERIDAN COUNTY (SHR)

RNP APCH.	MALSR	MISSED APPROACH: Climbing left turn to 7300 direct SHR VOR/DME and hold, continue climb-in-hold to 7300.
<p>Circling to Rwy 24 NA at night. Baro-VNAV NA. When local altimeter setting not received, procedure NA.</p> <p> -19°C</p>		

ASOS <b>135.175</b>	SALT LAKE CENTER <b>127.75 351.9</b>	UNICOM <b>123.0</b> (CTAF)
------------------------	---	-------------------------------



ELEV 4021		TDZE 3985
-----------	--	-----------



7300	SHR				KEKNE	7 NM Holding Pattern
		PIDSE	JULVI	FEKLI		
		2.8 NM to RW33	5.7 NM to RW33	7200		
		*1.1 NM to RW33			146°	12000
					326°	9100
						GP 3.00°
						TCH 55
		1.1	1.7 NM	2.9 NM	4.3 NM	10 NM
4920*	5840*	7200				
326°						
CATEGORY	A	B	C	D		
LPV DA		4205-1/2	220 (200-1/2)			
LNAV/VNAV DA		4380-3/4	395 (400-3/4)			
LNAV MDA	4380-1/2	395 (400-1/2)	4380-5/8	395 (400-5/8)		
CIRCLING	4600-1 579 (600-1)	4640-1 619 (700-1)	4860-2 1/2 839 (900-2 1/2)	5220-3 1199 (1200-3)		