


LOC/DME I-SHR <b>108.7</b> Chan 24	APP CRS <b>326°</b>	Rwy Idg TDZE Apt Elev	<b>8301</b> <b>3985</b> <b>4021</b>
--	------------------------	-----------------------------	---

# ILS or LOC/DME RWY 33

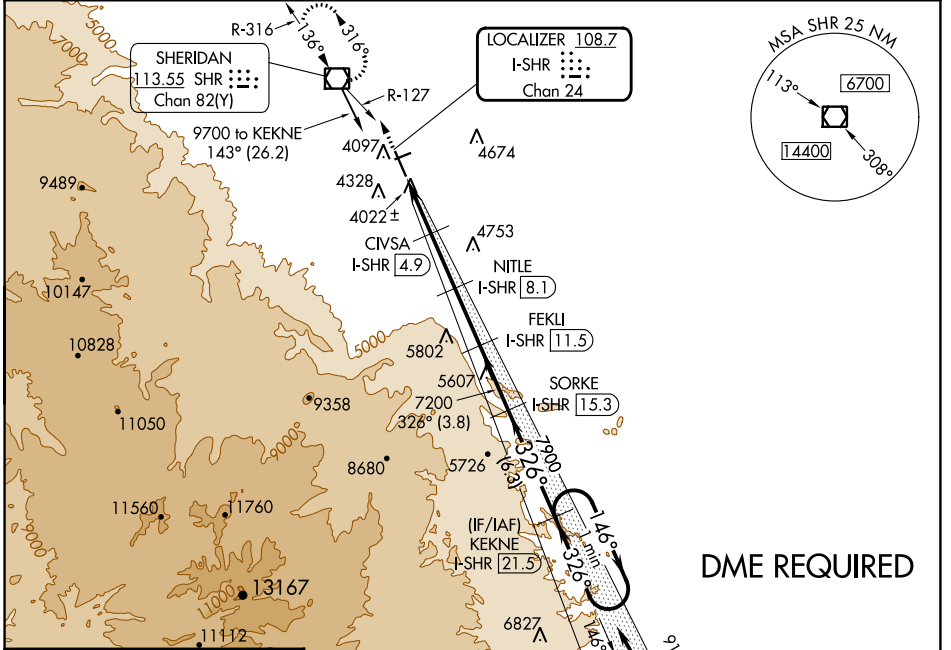
SHERIDAN COUNTY (SHR)

**⚠** When local altimeter setting not received, procedure NA.  
**⚠** Night landing: Rwy 24 NA. For inoperative MALS/R, increase S-LOC 33 Cats C and D visibility to 7/8 mile.

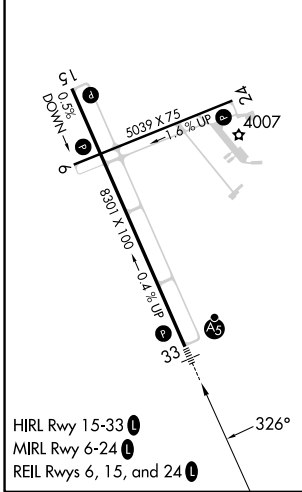
MALS/R 

MISSED APPROACH: Climb to 7000 on heading 326° and on SHR VOR/DME R-127 to SHR VOR/DME and hold, continue climb-in-hold to 7000.

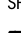
ASOS <b>135.175</b>	SALT LAKE CENTER <b>127.75 351.9</b>	UNICOM <b>123.0 (CTAF)</b>
------------------------	---	-------------------------------



ELEV 4021	<b>D</b>	TDZE 3985
-----------	----------	-----------



SHERIDAN, WYOMING  
 Amt d 25JUN15

7000	SHR	SHR	Use I-SHR DME when on the localizer course.
hdg 326°	R-127		
		FEKLI I-SHR 11.5	SORKE I-SHR 15.3
			KEKNE I-SHR 21.5
			One Minute Holding Pattern
*LOC only.	CIVSA I-SHR 4.9	NITLE I-SHR 8.1	
	*I-SHR 2.3		
	I-SHR 1.5		
		7200	7900
		6100*	7200
		5100*	
		0.8	2.6 NM
		3.2 NM	3.4 NM
		3.8 NM	6.3 NM
			GS 3.00° TCH 55

CATEGORY	A	B	C	D
S-ILS 33		4185-1/2	200 (200-1/2)	
S-LOC 33		4280-1/2	295 (300-1/2)	
<b>C</b> CIRCLING	4600-1 579 (600-1)	4640-1 619 (700-1)	4860-2 1/2 839 (900-2 1/2)	5220-3 1199 (1200-3)

NW-1, 03 OCT 2024 to 31 OCT 2024

NW-1, 03 OCT 2024 to 31 OCT 2024