

APP CRS 185°	Rwy Idg TDZE Apt Elev	5234 62 62
------------------------	-----------------------------	---------------------------------------

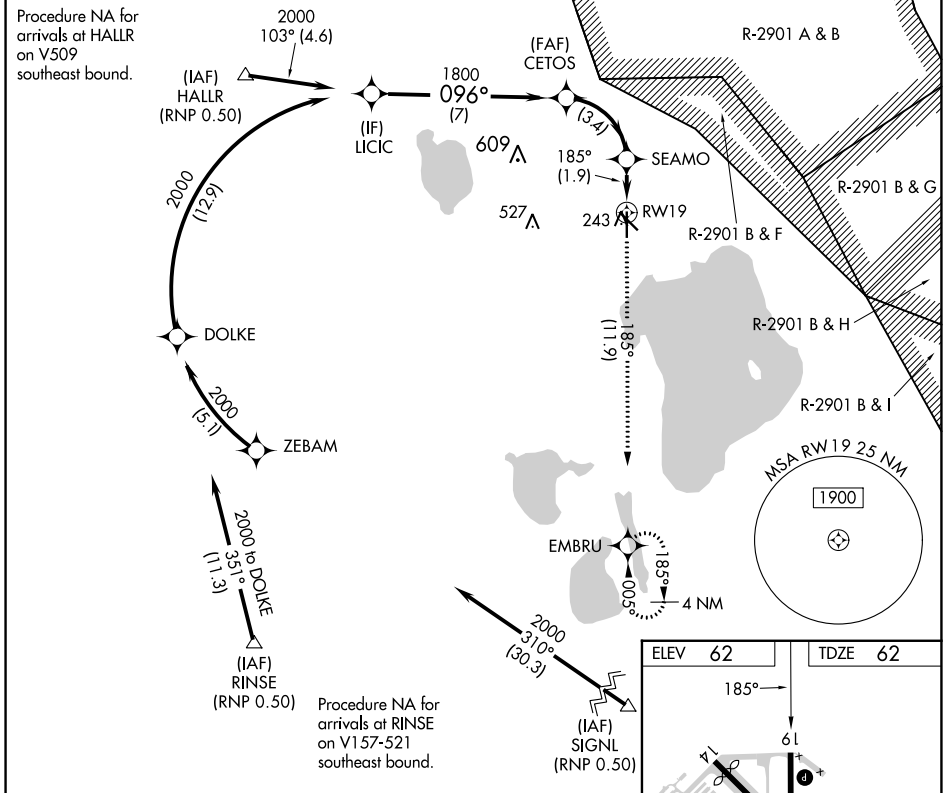
RNAV (RNP) RWY 19

SEBRING RGNL (SEF)

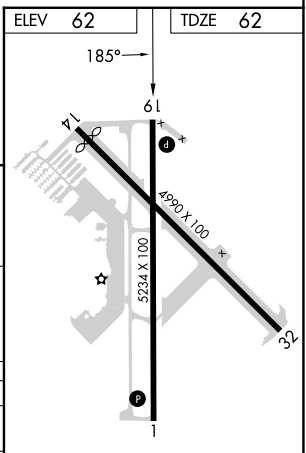
RNP AR APCH GPS.
 ▽ NA For uncompensated Baro-VNAV systems, procedure NA below -15°C or above 54°C.

MISSED APPROACH: Climb to 2000 on track 185° to EMBRU and hold.

AWOS-3 119.475	MIAMI CENTER 134.55 257.7	UNICOM 122.7 (CTAF) 0
--------------------------	-------------------------------------	---------------------------------



VGSI and RNAV glidepath not coincident (VGSI Angle 3.00/TCH 42).				
LICIC	CETOS	SEAMO	EMBRU	
2000	1800	718	2000	
GP 3.00° TCH 55			tr 185°	
096°		185°		
7 NM		3.4 NM		1.9 NM
CATEGORY	A	B	C	D
RNP 0.30 DA	440-1¼		378 (400-1¼)	



AUTHORIZATION REQUIRED

MIRL Rwy 1-19 0
REIL Rwy 1 and 19 0

SE-3, 31 OCT 2024 to 28 NOV 2024

SE-3, 31 OCT 2024 to 28 NOV 2024