

SEBRING, FLORIDA

AL-386 (FAA)

23278

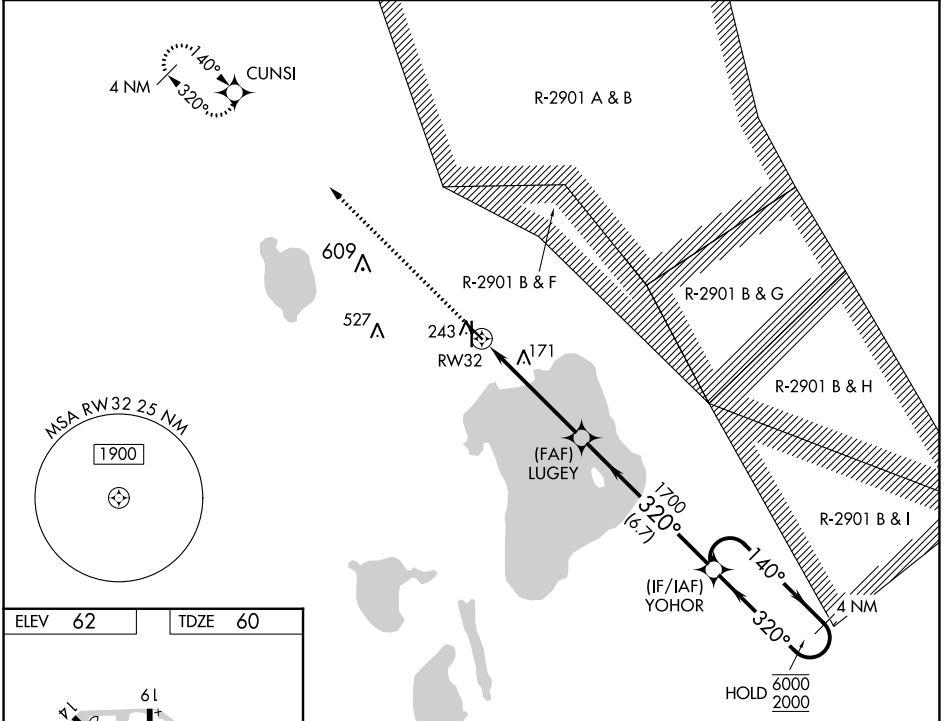
WAAS CH <b>48925</b> <b>W32A</b>	APP CRS <b>320°</b>	Rwy Idg TDZE Apt Elev	<b>4990</b> <b>60</b> <b>62</b>
--	------------------------	-----------------------------	---------------------------------------

# RNAV (GPS) RWY 32

SEBRING RGNL (SEF)

RNP APCH-GPS.	MISSED APPROACH: Climb to 2000 direct CUNSI and hold.
<p>⚠ Straight-in Rwy 32 NA at night, Circling Rwy 14 NA at night.</p> <p>⚠</p>	

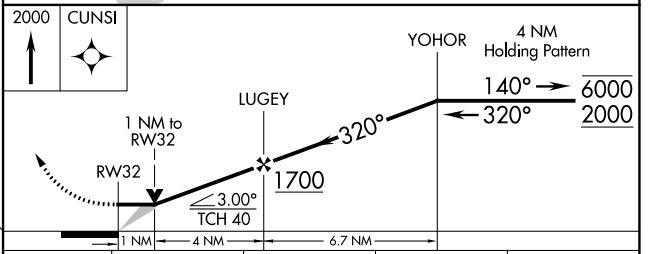
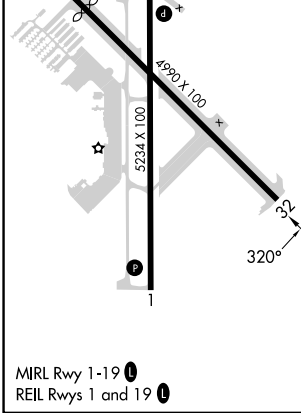
AWOS-3 <b>119.475</b>	MIAMI CENTER <b>134.55 257.7</b>	UNICOM <b>122.7 (CTAF) 0</b>
--------------------------	-------------------------------------	---------------------------------



SE-3, 31 OCT 2024 to 28 NOV 2024

SE-3, 31 OCT 2024 to 28 NOV 2024

ELEV 62	TDZE 60
---------	---------



CATEGORY	A	B	C	D
LP MDA	420-1 360 (400-1)			
LNAV MDA	480-1	420 (500-1)	480-1½	420 (500-1½)
<b>C</b> CIRCLING	600-1	538 (600-1)	600-1½ 538 (600-1½)	880-2¾ 818 (900-2¾)

SEBRING, FLORIDA  
Orig-C 19MAY22

27°27'N-81°21'W

# RNAV (GPS) RWY 32

SEBRING RGNL (SEF)