

WAAS CH <b>53306</b> <b>W30A</b>	APP CRS <b>306°</b>	Rwy Idg <b>8279</b> TDZE <b>3952</b> Apt Elev <b>3967</b>
--	------------------------	---

# RNAV (GPS) RWY 30

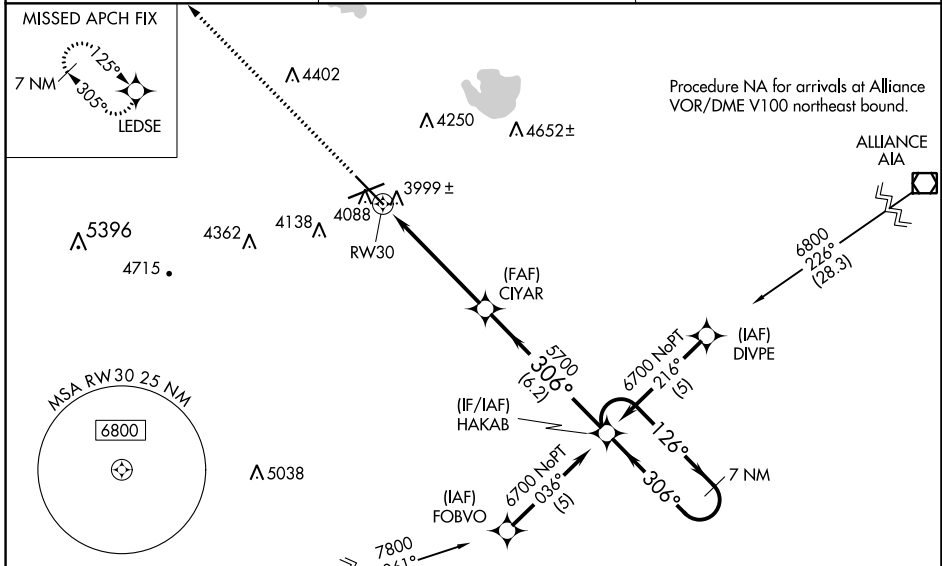
WESTERN NEBRASKA RGNL/WM B HEILIG FLD/SCOTTSLUFF (B,F,F')

**⚠** When local altimeter setting not received, use Alliance altimeter setting: increase LPV DA to 4293 feet and visibility 1/4 SM; increase LNAV/VNAV DA to 4392 feet and visibility 1/4 SM; increase all MDAs 100 feet and visibility Cats C and D 1/2 SM. For inoperative MALSRS, when using alliance altimeter setting, increase LPV all Cats visibility to 1 1/4. For uncompensated Baro-VNAV systems, LNAV/VNAV NA below -22°C (-7°F) or above 41°C (105°F). Baro-VNAV NA when using Alliance altimeter setting. VDP NA when using Alliance altimeter setting. DME/DME RNP-0.3 NA.



MISSED APPROACH: Climb to 6900 direct LEDSE and hold.

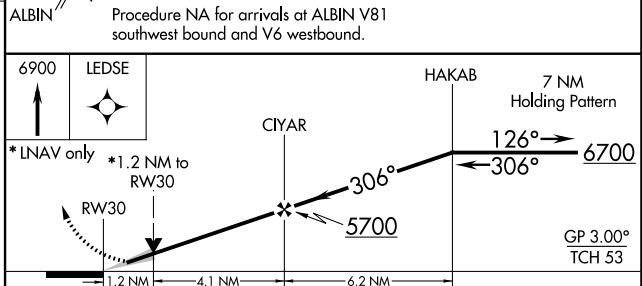
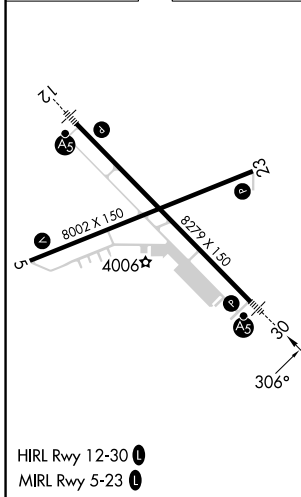
ASOS <b>121.025</b>	DENVER CENTER <b>127.95 338.2</b>	UNICOM <b>123.0 (CTAF) 0</b>
------------------------	--------------------------------------	---------------------------------



NC-2, 08 AUG 2024 to 05 SEP 2024

NC-2, 08 AUG 2024 to 05 SEP 2024

ELEV 3967	<b>D</b>	TDZE 3952
-----------	----------	-----------



CATEGORY	A	B	C	D
LPV DA		4202-1/2	250 (300-1/2)	
LNAV/VNAV DA		4301-3/4	349 (400-3/4)	
LNAV MDA	4380-1/2	428 (500-1/2)	4380-3/4 428 (500-3/4)	4380-1 428 (500-1)
<b>C</b> CIRCLING	4500-1	533 (600-1)	4560-1 1/2 593 (600-1 1/2)	4740-2 1/2 773 (800-2 1/2)