

WAAS CH 42722 W04A	APP CRS 040°	Rwy Idg TDZE Apf Elev	7001 338 378
--	------------------------	-----------------------------	---

RNAV (GPS) RWY 4

SCHENECTADY COUNTY (SCH)

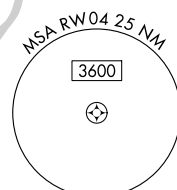
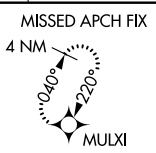
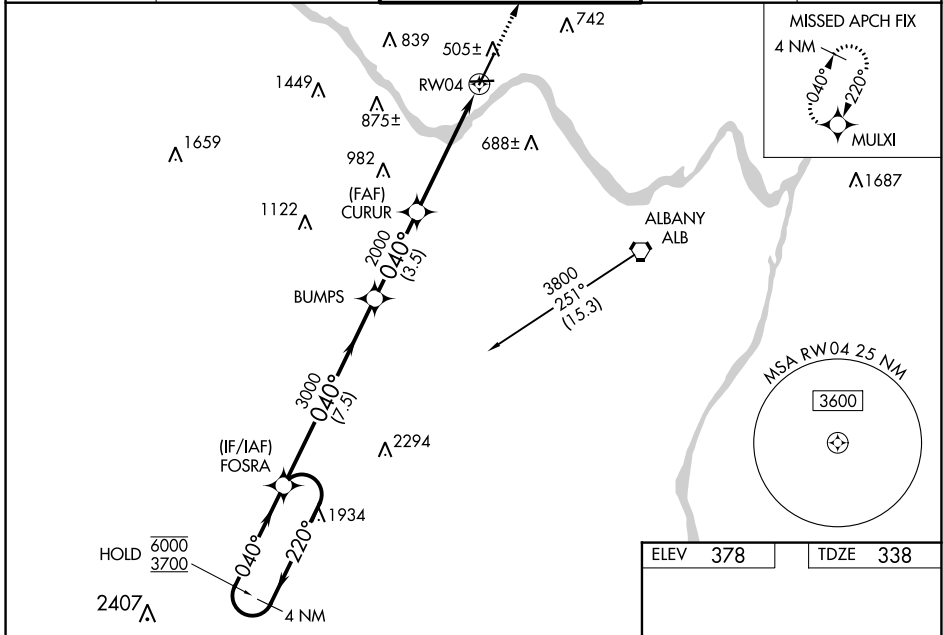
RNP APCH - GPS.

▼ Circling Rwy 10 NA at night. Baro-VNAV and VDP NA when using Albany altimeter setting.
▲ Rwy 4 helicopter visibility reduction below 3/4 SM NA. Inop table does not apply to LPV.
 For uncompensated Baro-VNAV systems, LNAV/VNAV NA below -15°C or above 54°C.
 When local altimeter setting not received, use Albany altimeter setting and increase LPV DA to 621 feet, LNAV/VNAV DA to 638 feet, and increase all MDAs 40 feet. For inop ALS, increase LNAV/VNAV all Cats visibility to 3/8 SM and LNAV Cats A/B to 1 SM and Cats C/D to 1 1/8 SM. For inop ALS when using Albany altimeter setting, increase LPV all Cats visibility to 3/8 SM, increase LNAV/VNAV all Cats to 3/8 SM, increase LNAV Cats A/B visibility to 1 SM, and Cats C/D to 1 1/8 SM.



MISSED APPROACH:
Climb to 3000 direct
MULXI and hold.

AWOS-3 119.275	ALBANY APP CON 132.825 263.075	SCHENECTADY TOWER * 121.3 (CTAF) 321.1	GND CON 121.9	UNICOM 122.95
--------------------------	--	--	-------------------------	-------------------------



NE-2, 31 OCT 2024 to 28 NOV 2024

NE-2, 31 OCT 2024 to 28 NOV 2024

4 NM Holding Pattern	VGSI and RNAV glidepath not coincident (VGSI Angle 3.00/TCH 51).				3000	MULXI
	FOSRA				↑	✧
	6000 3700	← 220°	→ 040°	BUMPS	CURUR	* LNAV only.
	GP 3.00° TCH 55	040°	3000	2000	2000	* 1.3 NM to RWY 4
			7.5 NM	3.5 NM	3.8 NM	1.3
CATEGORY	A	B	C	D		
LPV DA		588-3/4	250 (300-3/4)			
LNAV/VNAV DA		605-3/4	267 (300-3/4)			
LNAV MDA	800-3/4	462 (500-3/4)	800-1	462 (500-1)		
C CIRCLING	880-1 502 (600-1)	940-1 562 (600-1)	1120-2 1/4 742 (800-2 1/4)	1320-3 942 (1000-3)		

