

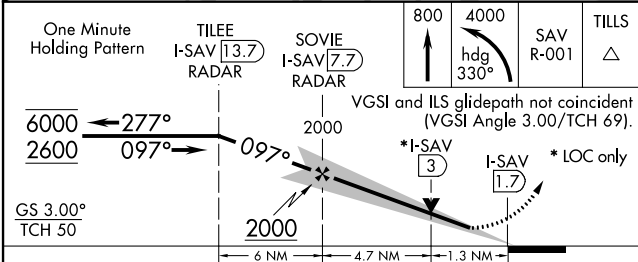
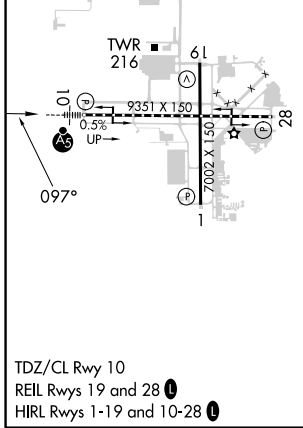
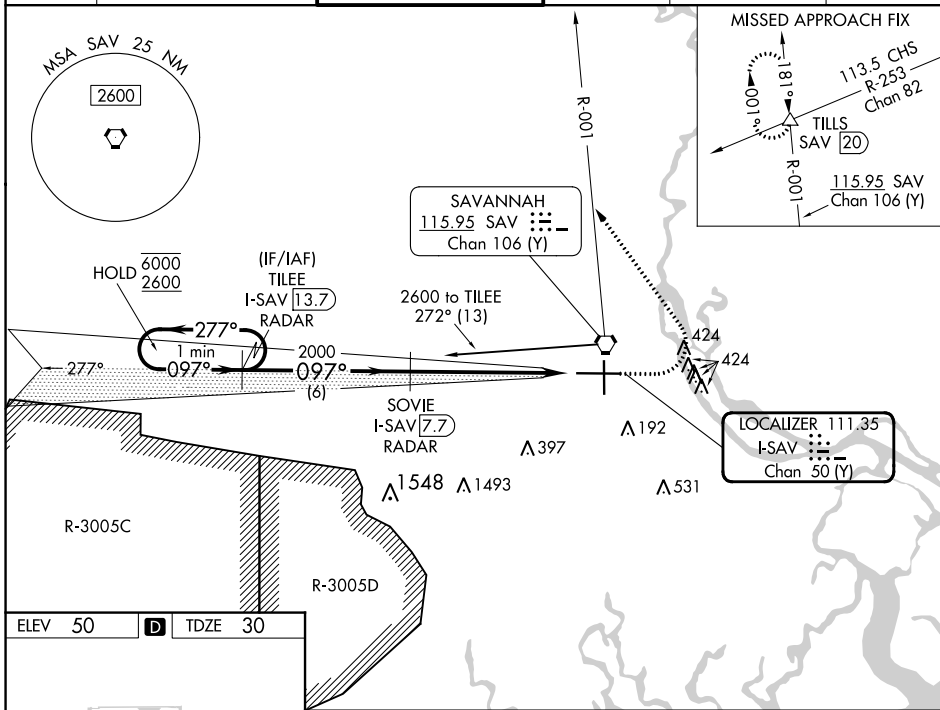
LOC I-SAV <b>111.35</b> Chan <b>50 (Y)</b>	APP CRS <b>097°</b>	Rwy Idg TDZE <b>30</b> Apt Elev <b>50</b>	<b>9351</b>
--	------------------------	---	-------------

# ILS or LOC RWY 10

SAVANNAH/HILTON HEAD INTL (SAV)

DME required.		MALSR	MISSED APPROACH: Climb to 800 then climbing left turn to 4000 on heading 330° and SAV VORTAC R-001 to TILLS INT/SAV 20 DME and hold.
<p><b>▼</b> For inop ALS, increase S-LOC 10 Cat C/D visibility to 1 3/8 SM.</p> <p><b>▲</b></p>			

ATIS <b>123.75</b>	SAVANNAH APP CON* <b>125.3 371.875</b>	SAVANNAH TOWER* <b>125.975 (CTAF) 0 257.8</b>	GND CON <b>121.9 348.6</b>	CLNC DEL <b>119.55 291.775</b>	UNICOM <b>122.95</b>
-----------------------	---	--	-------------------------------	-----------------------------------	-------------------------



CATEGORY	A	B	C	D
S-ILS 10	230/18 200 (200-1/2)			
S-LOC 10	500/24	470 (500-1/2)	500/50	470 (500-1)
<b>C</b> CIRCLING	520-1	470 (500-1)	740-2 690 (700-2)	740-2 1/4 690 (700-2 1/4)

SE-4, 31 OCT 2024 to 28 NOV 2024

SE-4, 31 OCT 2024 to 28 NOV 2024