

APP CRS	Rwy ldg	<b>8004</b>
<b>316°</b>	TDZE	<b>261</b>
	Apt Elev	<b>261</b>

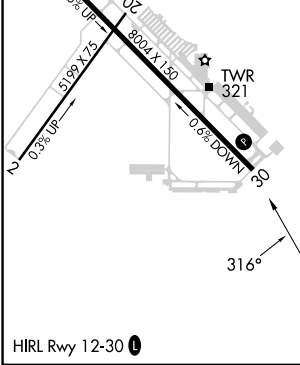
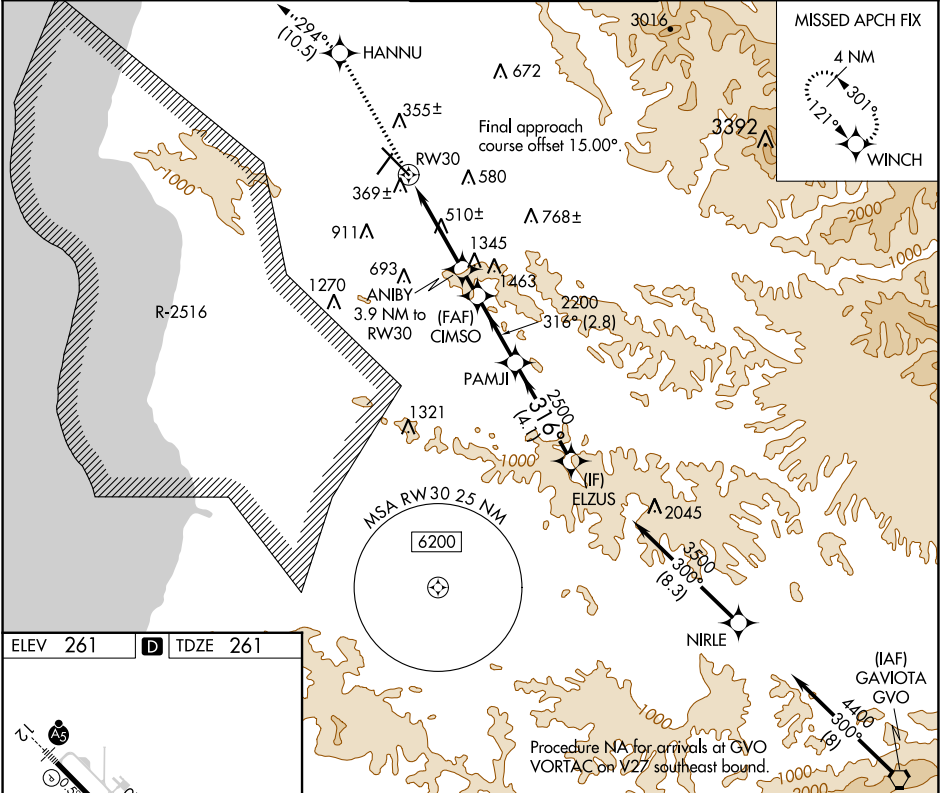
# RNAV (GPS) RWY 30

SANTA MARIA PUB/CAPT G ALLAN HANCOCK FLD (SMX)

**⚠** DME/DME RNP-0.3 NA. When local altimeter setting not received, use San Luis Obispo County Rgnl altimeter setting and increase all MDA 60 feet. Rwy 30 helicopter visibility reduction below 1 SM NA. Straight-in Rwy 30 NA at night, Circling Rwy 2, 30 NA at night.

**MISSED APPROACH:** Climb to 4000 direct HANNU and on track 294° to WINCH and hold.

ATIS <b>121.15</b>	SANTA BARBARA APP CON * <b>124.15 327.8</b>	SANTA MARIA TOWER * <b>118.3 (CTAF) 239.25</b>	GND CON <b>121.9</b>	UNICOM <b>122.95</b>
-----------------------	--	---	-------------------------	-------------------------



ELEV 261	D	TDZE 261	Visual Segment - Obstacles.				
			HANNU 4000	WINCH tr 294°	ELZUS 3500		
			ANIBY 3.9 NM to RW30	CIMS0	PAMJI	ELZUS	
			RW30	1780	2200	316°	3500
			3.9 NM	1.1 NM	2.8 NM	4.1 NM	
CATEGORY	A	B	C	D			
LNAV MDA	1600-1¼ 1339 (1400-1¼)	1600-1½ 1339 (1400-1½)	1600-3 1339 (1400-3)	NA			
CIRCLING	1600-1¼ 1339 (1400-1¼)	1600-1½ 1339 (1400-1½)	1600-3 1339 (1400-3)	NA			

SW-3, 31 OCT 2024 to 28 NOV 2024

SW-3, 31 OCT 2024 to 28 NOV 2024