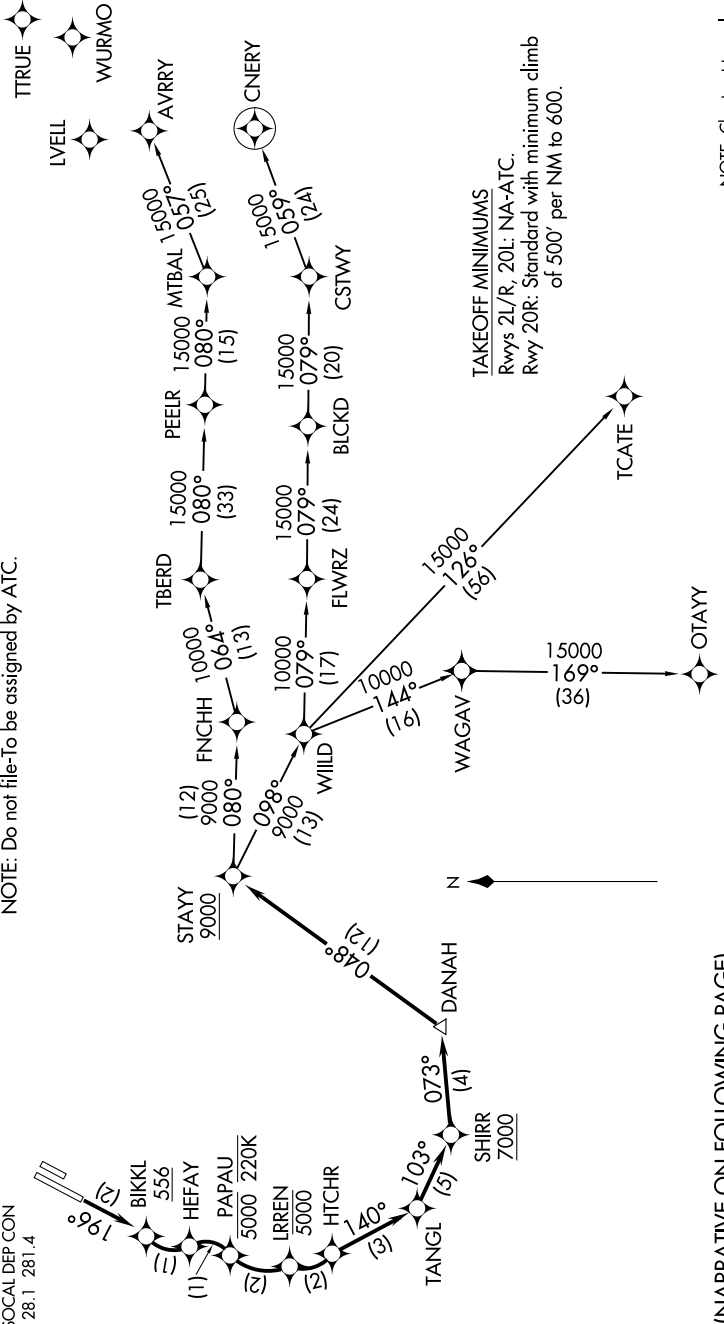


SW-3, 31 OCT 2024 to 28 NOV 2024

D-ATIS  
126.0  
CLNC DEL  
118.0  
CPDC  
GND CON  
120.8  
JOHN WAYNE TOWER \*  
126.8 343.625  
SOCAL DEP CON  
128.1 281.4

NOTE: RNP 1.  
NOTE: RF required.  
NOTE: GPS required.  
NOTE: RADAR required.  
NOTE: Turbojet only.  
NOTE: Parachute jumping all hours, 14000 and below,  
north of route between STAYY and FNCHH.  
NOTE: Do not file-To be assigned by ATC.

TOP ALTITUDE:  
13000



TAKEOFF MINIMUMS  
Rwys 2L/R, 20L: NA-ATC.  
Rwy 20R: Standard with minimum climb  
of 500' per NM to 600.

NOTE: Chart not to scale.

(NARRATIVE ON FOLLOWING PAGE)

SW-3, 31 OCT 2024 to 28 NOV 2024