

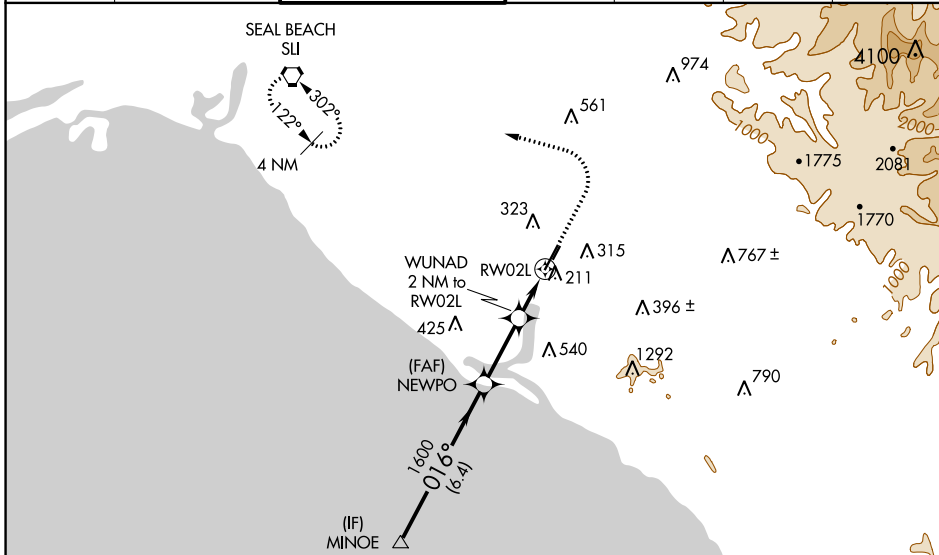
APP CRS	Rwy Idg	<b>5700</b>
<b>016°</b>	TDZE	<b>56</b>
	Apt Elev	<b>56</b>

# RNAV (GPS) Y RWY 2L

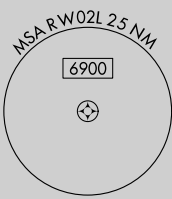
JOHN WAYNE/ORANGE COUNTY (SNA)

RNP APCH - GPS.		MISSED APPROACH: Climb to 800 then climbing left turn to 2600 direct SLI VORTAC and hold.				
▼ ▲ Circling Rwy 20L NA at night.						

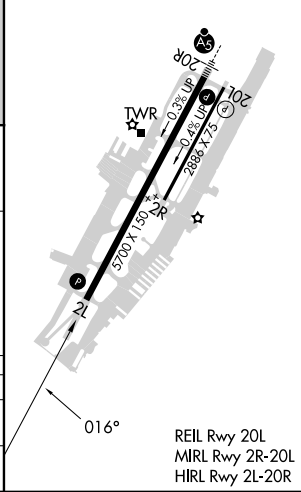
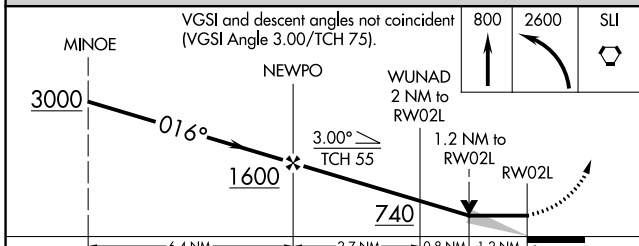
D-ATIS <b>126.0</b>	SOCAL APP CON <b>121.3 263.1</b>	JOHN WAYNE TOWER ★ <b>126.8</b> (CTAF) <b>0 343.625</b>	GND CON <b>120.8</b>	CLNC DEL <b>118.0</b>	CPDLC	UNICOM <b>122.95</b>
------------------------	-------------------------------------	--	-------------------------	--------------------------	-------	-------------------------



Procedure NA for arrivals at MINOE on V25 southeast bound.



ELEV	56	D	TDZE	56
------	----	---	------	----



CATEGORY	A	B	C	D
LNVA MDA	520-1 464 (500-1)		520-1 3/8 464 (500-1 3/8)	
▲ CIRCLING	640-1 584 (600-1)		840-2 1/4 784 (800-2 1/4)	1160-3 1104 (1200-3)

SW-3, 31 OCT 2024 to 28 NOV 2024

SW-3, 31 OCT 2024 to 28 NOV 2024