

APP CRS	Rwy Idg	5700
196°	TDZE	54
	Apt Elev	56

RNAV (RNP) Z RWY 20R

JOHN WAYNE/ORANGE COUNTY (SNA)

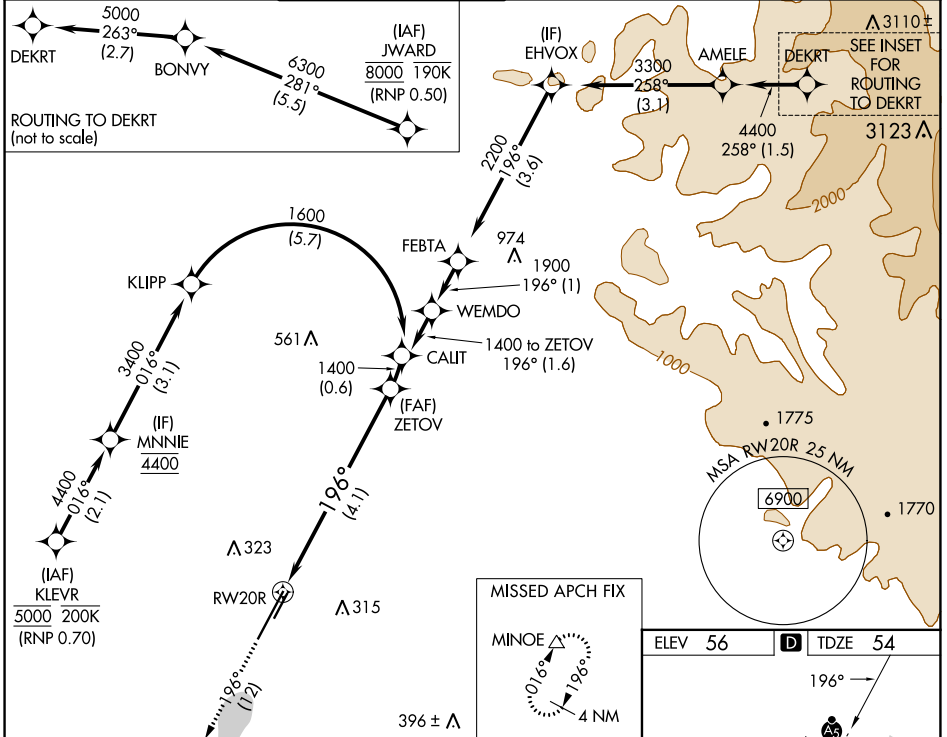
RNP AR APCH - GPS. Authorization required. From JWARD: min RNP 0.50. From KLEVR, RF, min RNP 0.70.

For uncompensated Baro-VNAV systems, procedure NA below 5°C or above 54°C.

MALSR

MISSED APPROACH: Climb to 3000 on track 196° to MINOE and hold, continue climb-in-hold.

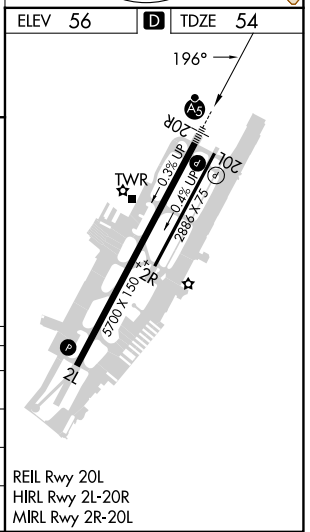
D-ATIS	SOCAL APP CON	JOHN WAYNE TOWER ★	GND CON	CLNC DEL	CPDLC	UNICOM
126.0	121.3 263.1	126.8 (CTAF) 343.625	120.8	118.0		122.95



SW-3, 03 OCT 2024 to 31 OCT 2024

SW-3, 03 OCT 2024 to 31 OCT 2024

3000 ↑ fr 196°	MINOE △	VGSI and RNAV glidepath not coincident (VGSI Angle 3.00/TCH 68). See planview for multiple IF locations.	ZETOV 1400
RWY20R		196°	1400
		4.1 NM	GP 3.00° TCH 51



CATEGORY	A	B	C	D
RNP 0.11 DA		376/26	322 (400-½)	
RNP 0.15 DA		562/55	508 (600-1)	
RNP 0.30 DA		618-1¼	564 (600-1¼)	

AUTHORIZATION REQUIRED