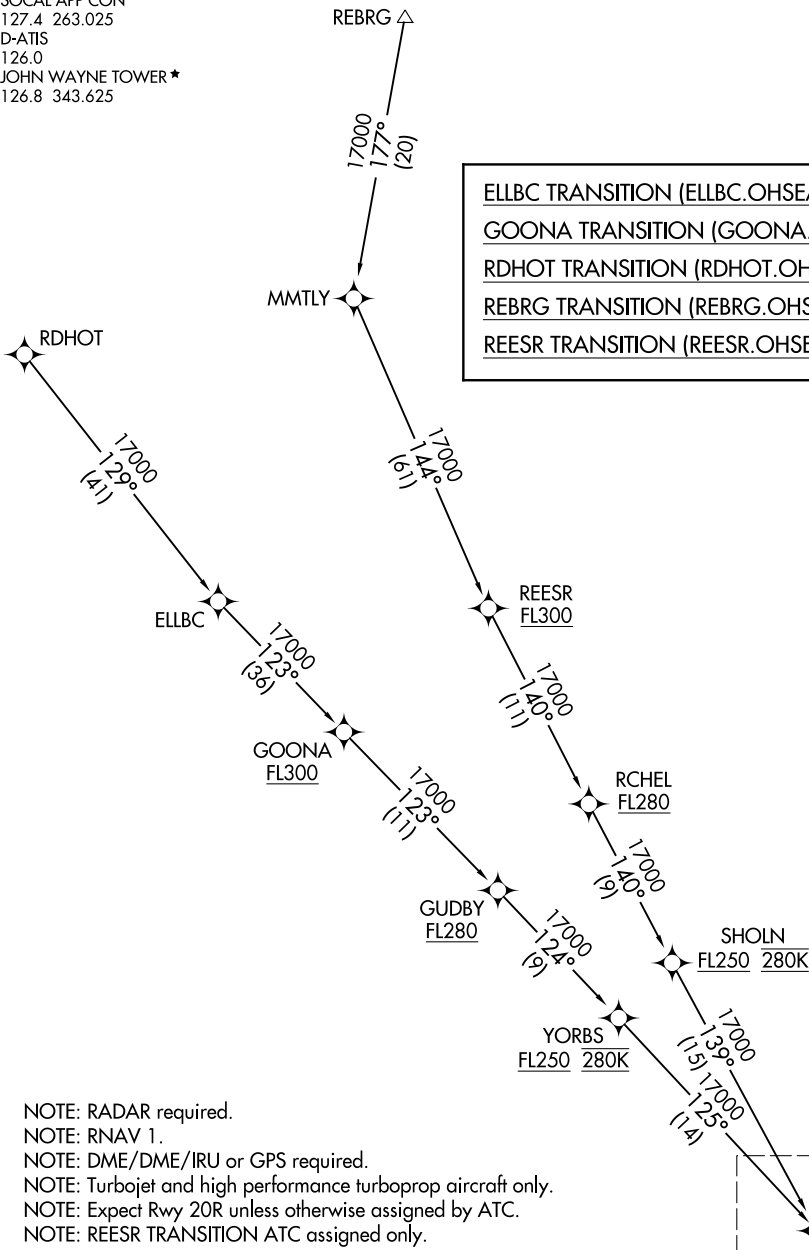


OHSEA TWO ARRIVAL (RNAV) Transition Routes

SOCAL APP CON
 127.4 263.025
 D-ATIS
 126.0
 JOHN WAYNE TOWER ★
 126.8 343.625

ELLBC TRANSITION (ELLBC.OHSEA2)
GOONA TRANSITION (GOONA.OHSEA2)
RDHOT TRANSITION (RDHOT.OHSEA2)
REBRG TRANSITION (REBRG.OHSEA2)
REESR TRANSITION (REESR.OHSEA2)



SW-3, 11 JUL 2024 to 08 AUG 2024

SW-3, 11 JUL 2024 to 08 AUG 2024

- NOTE: RADAR required.
- NOTE: RNAV 1.
- NOTE: DME/DME/IRU or GPS required.
- NOTE: Turbojet and high performance turboprop aircraft only.
- NOTE: Expect Rwy 20R unless otherwise assigned by ATC.
- NOTE: REESR TRANSITION ATC assigned only.

(CONTINUED ON FOLLOWING PAGE)

NOTE: Chart not to scale.

See following page for Arrival Routes.