

(MIKAA1.MIKAA) 22251

MIKAA ONE DEPARTURE (RNAV)

JOHN WAYNE/ORANGE COUNTY (SNA)
AL-377 (FAA) SANTA ANA, CALIFORNIA

D-ATIS 126.0
CLNC DEL 118.0
CPDLC
GND CON 120.8
SOCAL DEF CON 133.85 346.35

TOP ALTITUDE:
14000

SW-3, 03 OCT 2024 to 31 OCT 2024

DEPARTURE ROUTE DESCRIPTION

TAKEOFF RUNWAY 2L: Climb heading 016°, then direct LIJON, then on track 058° to CHOAK, then on depicted route to MIKAA thence. . . .

. . . . (transition). Maintain 14000, expect filed altitude within 10 minutes of departure.

HHERO TRANSITION (MIKAA1.HHERO)

TAKEOFF MINIMUMS

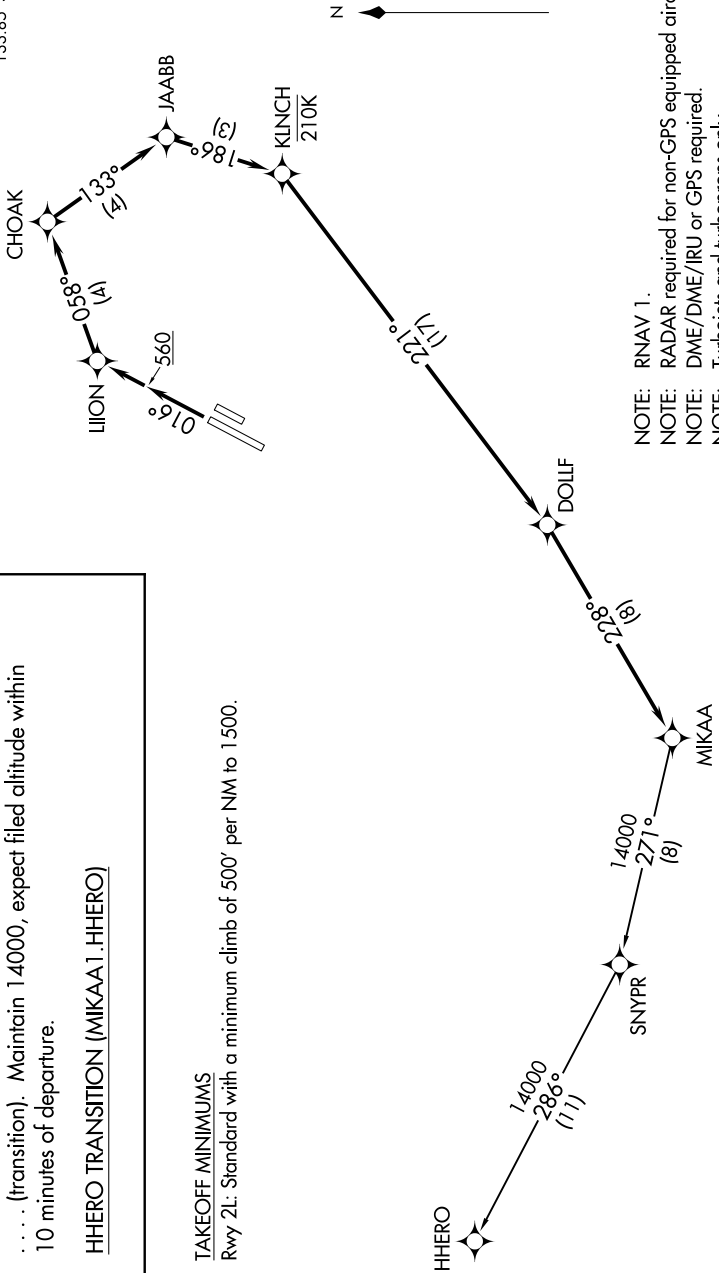
Rwy 2L: Standard with a minimum climb of 500' per NM to 1500.



MIKAA ONE DEPARTURE (RNAV)

(MIKAA1.MIKAA) 27APR17

SANTA ANA, CALIFORNIA
JOHN WAYNE/ORANGE COUNTY (SNA)



- NOTE: RNAV 1.
- NOTE: RADAR required for non-GPS equipped aircraft.
- NOTE: DME/DME/IRU or GPS required.
- NOTE: Turbojets and turboprops only.

NOTE: Chart not to scale.

SW-3, 03 OCT 2024 to 31 OCT 2024